



# Nordhydraulic

HYDAC INTERNATIONAL

## Selector valve RV 360



Solutions that power your visions

### Nordhydraulic AB

P.O Box 189 (Industrivägen 15)  
SE-872 24 KRAMFORS  
Sweden

Telephone: Int. +46 612 71 72 00  
Telefax: Int. +46 612 71 72 15

E-mail: [info@nordhydraulic.se](mailto:info@nordhydraulic.se)  
Web: [www.nordhydraulic.se](http://www.nordhydraulic.se)

**Data sheet**  
**Selector valve / RV 360**

# Selector valve RV 360

## Make use of the Nordhydraulic expertise

Our skilled and experienced design and application engineers are at your disposal, helping you to specify the valve configuration that meets your application requirements.

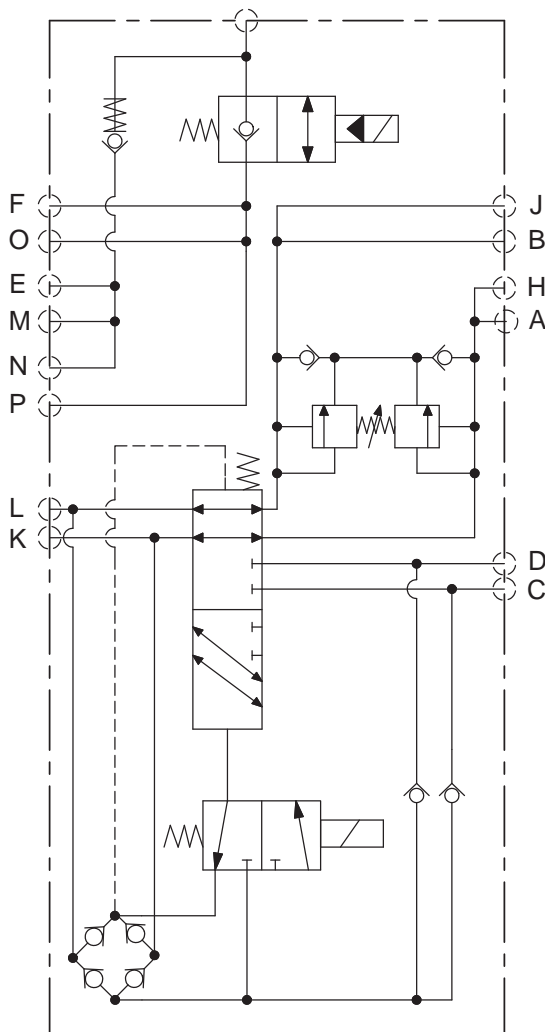
The selector valve RV 360 is especially designed for use on front-end loaders on agriculture tractors. That means that the valve admits an optimised piping and an adapted assembling on the loader. The valve is designed with a basic unit RV 361 that can be completed with an additional unit to make it RV 362.

RV 360 is pilot operated in order to make it possible to use a design for low internal leakage in combination with reliable function also under exacting conditions. The pilot operation also admits a reasonable current consumption.

Both RV 361 and RV 362 can be configured with a relief valve of cross-over type.

The basic valve RV 361 also comes with connections for cushion by one or several accumulators. The valve is in such cases configured with a solenoid operated shut-off valve in order to shut off the cushion system for very precise control of the position of the loader. As an option is it also possible to configure the valve with a check valve with a damping restriction.

The valve is tested and approved for the very demanding use in the actual application and also thoroughly proved in the field.



### Data sheet

This data sheet presents a selection of standard components and how to specify these in a valve assembly according to your application requirements. For further information on RV 360 and available components, please contact Nordhydraulic.



# Technical data

## Pressures / flow

Max. system pressure*	300 bar (30,0 MPa)
Rated working pressure	210 bar (21,0 MPa)
Max recommended flow	120 l/min
Rated flow	60 l/min
Pressure range for cross over relief valve	160 to 220 bar (16,0 - 22,0 PMa)
Pressure drop one way over selector spool at flow 60 l/min.	10 bar (1,0 MPa)
Pressure drop P to G, at 20 l/min and activated solenoid valve	3 bar (0,3 MPa)
Pressure drop N to G, at 20 l/min and the damping restriction SBV assembled	25 bar (2,5 MPa)

## Further data

Recommended contamination level at normal duty: equal to or better than 18/14 as per ISO 4406.

Hydraulic fluid viscosity range at continuous operation: 10-400 mm<sup>2</sup>/s(cSt). Higher viscosity allowed at start up.

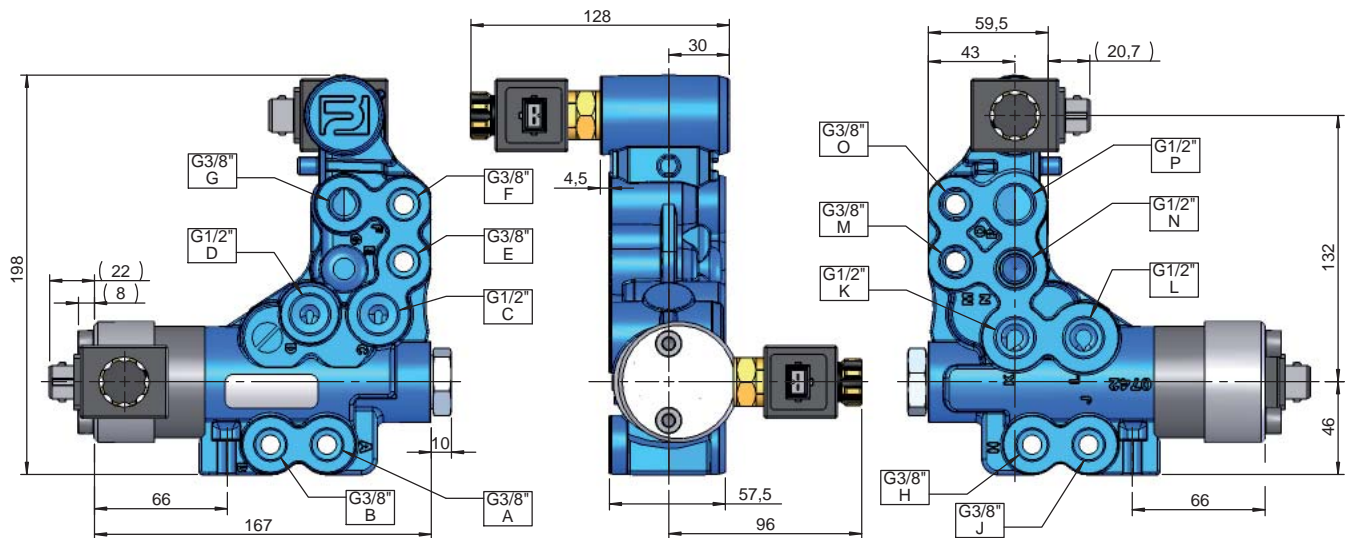
Mineral oil and synthetic oil based on mineral oil are recommended.

Max. hydraulic fluid temperature range for continuous operation: -15°C - + 80°C.

Spool leakage at 100 bar, 32 cSt and 40°C: < 13 cm<sup>3</sup>/min.

RV 360

## Dimensions, weight

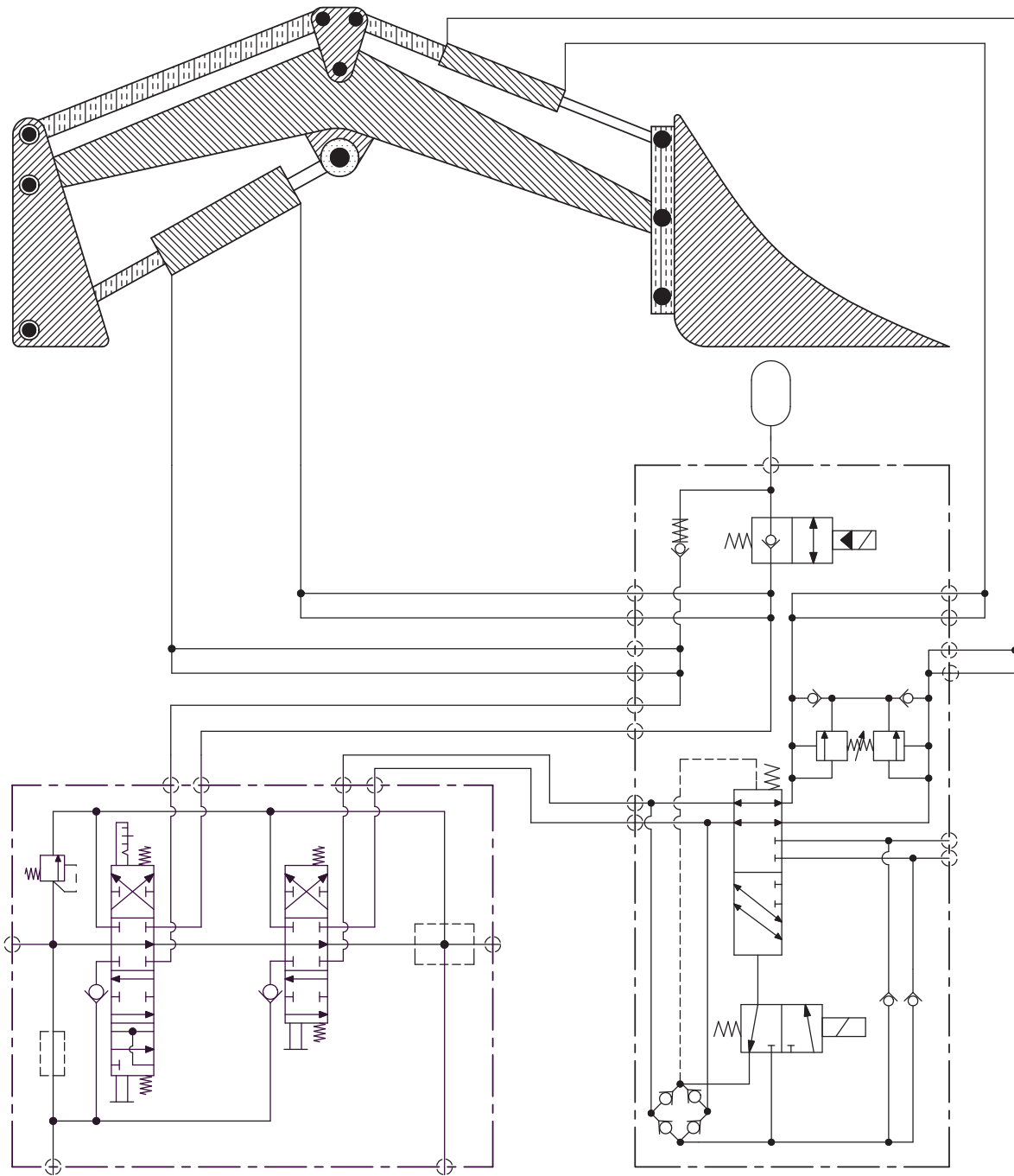


## Weights, complete valve:

1 section	6,5 kg
2 sections	9,4 kg



RV 360



Nordhydraulic offers the complete concept for front-end loaders. The concept includes the valves for the hydraulic system as well as the Nordhydraulic great experience of the front end loader application.

RMA 202 or RMB 202 as alternatives for the main manoeuvre valve and RV 361 or RV 362 to complete the system for one or two additional functions will give the front-end loader manufacturer access to a well proven concept.