

# SD6



**SD6** .....

3

1 12 ,

“carry-over”.

16 .

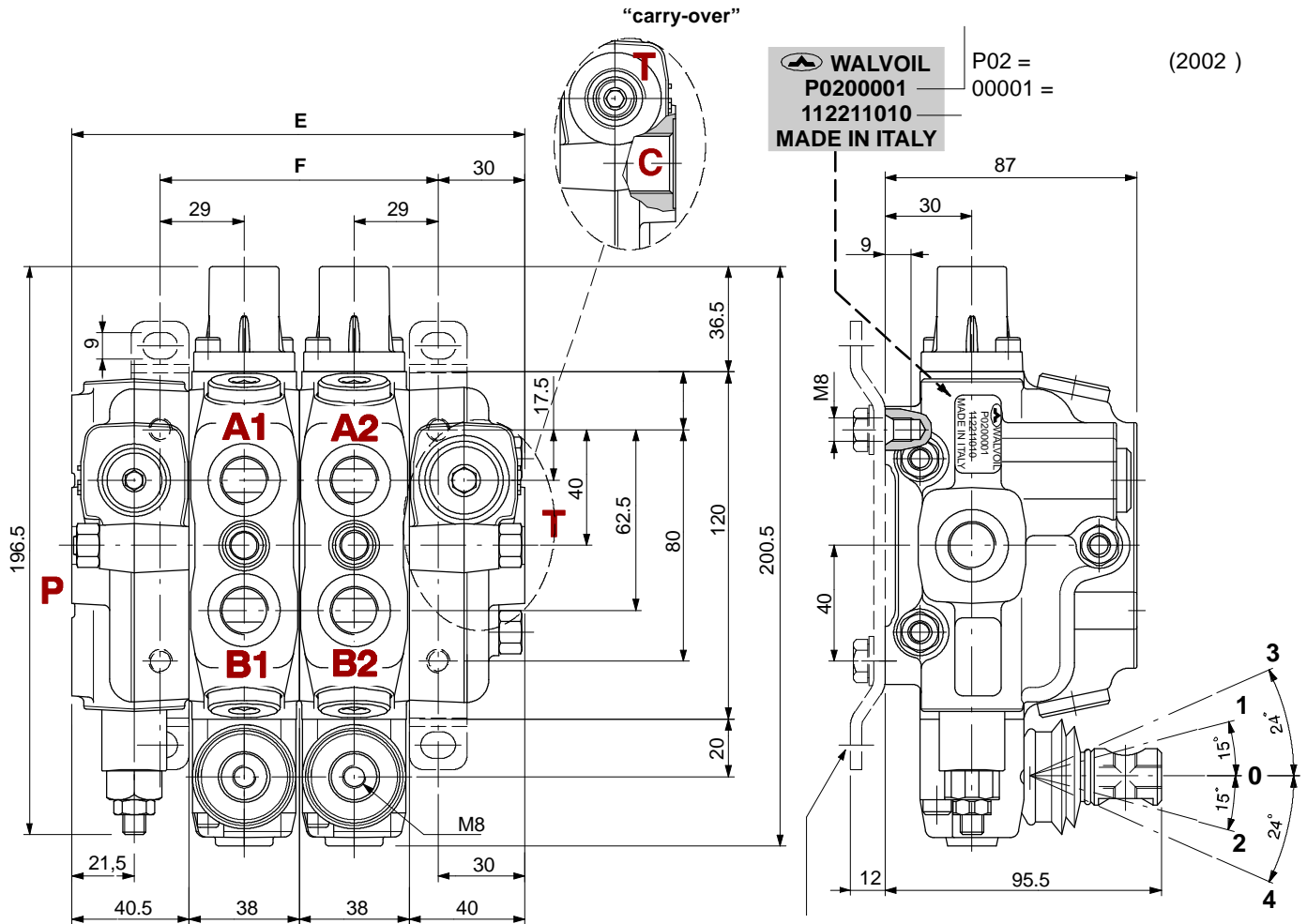
.....  
65



.....	4
.....	5
.....	6
.....	9
.....	10
.....	12
.....	13
.....	14
.....	15
R2 .....	17
S.....	18
.....	20
.....	22
.....	23
“ ” .....	30
“ ” .....	38
.....	44
.....	50
CS1 .....	55
EI .....	56
DFG .....	57
EVP9 .....	58
EVP3 .....	60
.....	61
.....	62
.....	63

40°C.

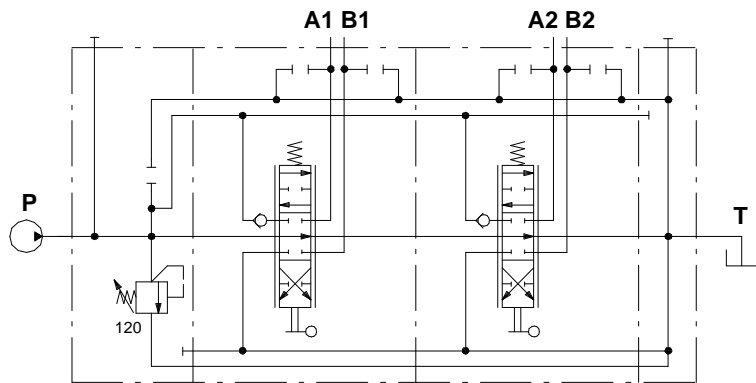
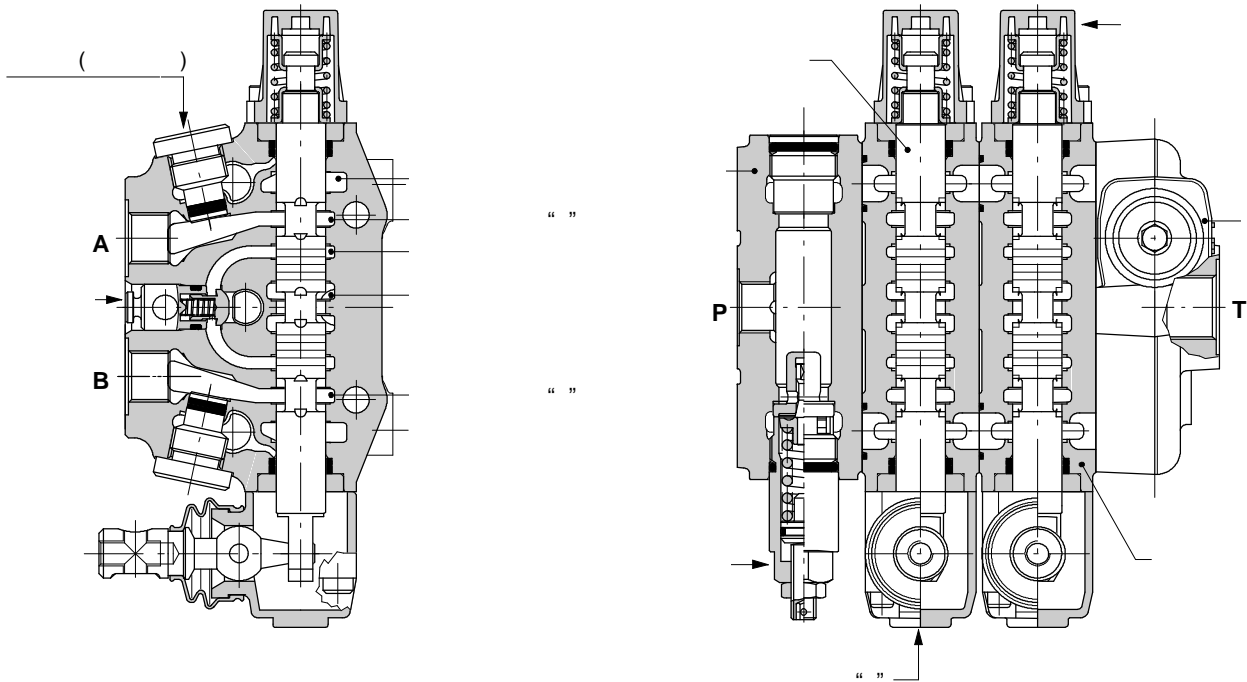
		45 /
( )		315
		210
		25
( ) -	$p=100$ 40°C	3 3/
	NBR (Buna-N)	-20°C 80°C
	FPM ( )	-20°C 100°C
		15 75
		12
		400
		19/16 - ISO 4406
		-40°C 60°C
		30



T	E	F	
SD6/1	118.5	58	5.3
SD6/2	156.5	96	7.6
SD6/3	194.5	134	9.9
SD6/4	232.5	172	12.2
SD6/5	270.5	210	14.8
SD6/6	308.5	248	17.1

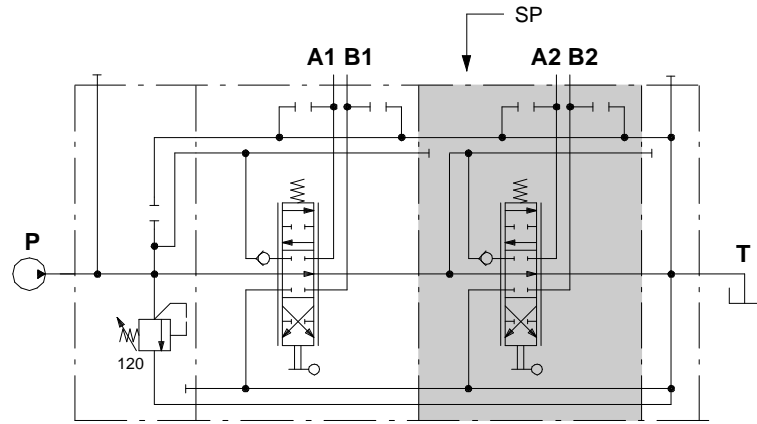
	E	F	
SD6/7	346.5	286	19.4
SD6/8	384.5	324	21.7
SD6/9	422.5	362	24
SD6/10	460.5	400	26.3
SD6/11	498.5	438	28.6
SD6/12	536.5	476	30.9

	BSP (ISO 228/1)	UN-UNF (ISO 11926-1)	(ISO 262)
P	G 3/8	3/4- 16 (SAE 8)	M18x1.5
	G 3/8	9/16- 18 (SAE 6)	M18x1.5
"carry-over" C	G 1/2	3/4- 16 (SAE 8)	M22x1.5
	G 1/4	9/16- 18 (SAE 6)	G 1/4
	NPTF 1/8- 27	NPTF 1/8- 27	NPTF 1/8- 27



: SD6/2/AC(YG3- 120)/18L/18L/RC

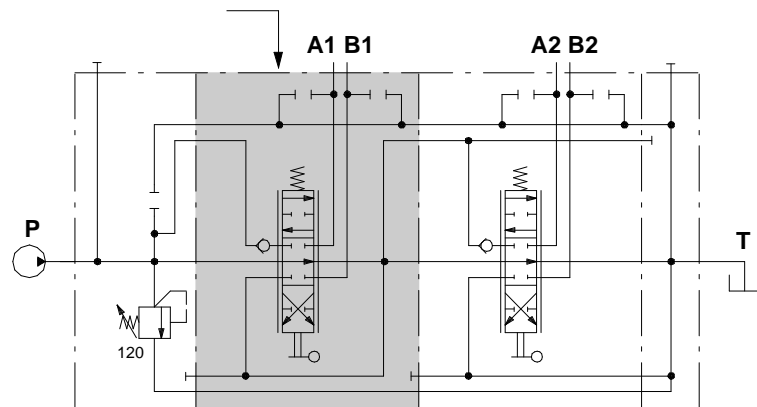
( . . . 22)



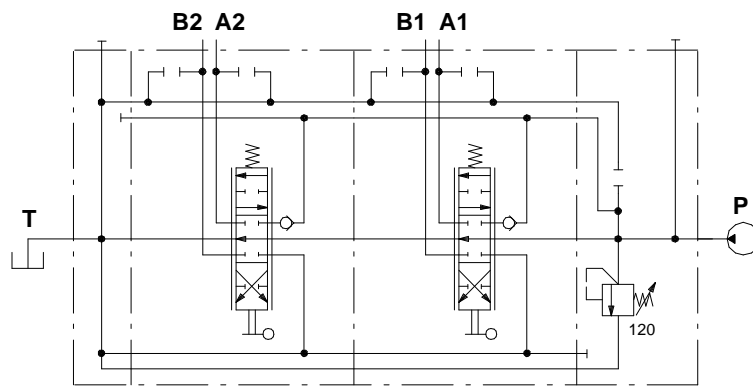
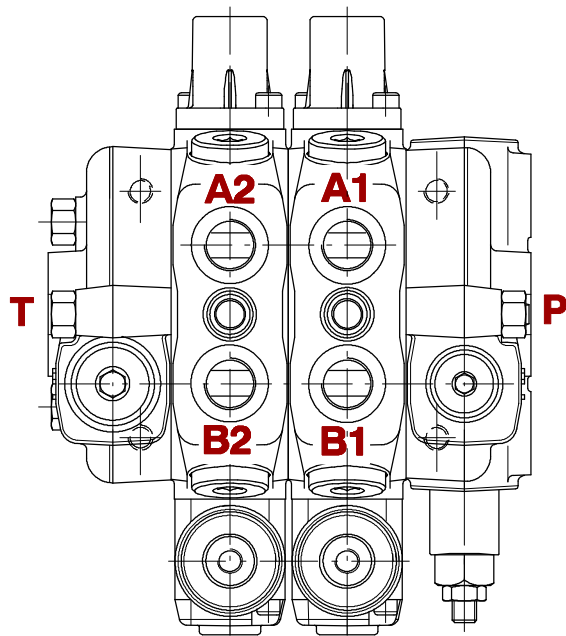
SD6/2/AC(YG3-120)/18L/SP-18L/RC

( . . . 22)

S

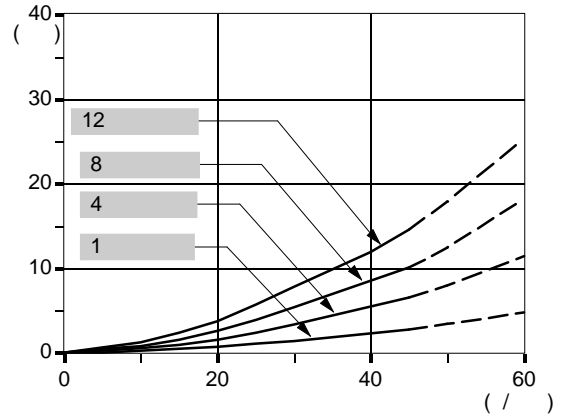
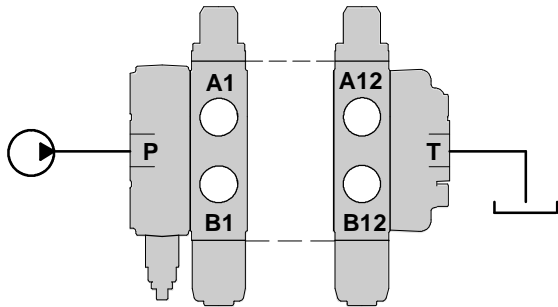


SD6/2/AC(YG3-120)/S-18L/P-18L/RC

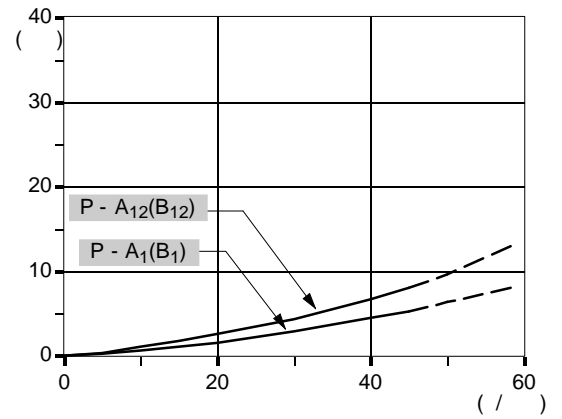
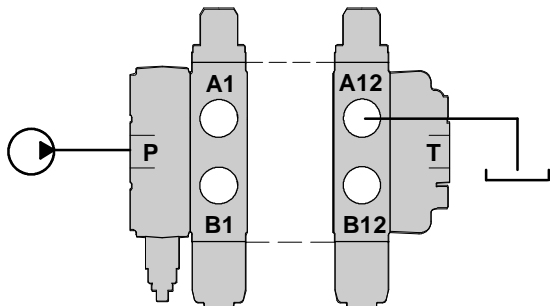


SD6/2/BC(YG3-120)/18L/18L/RC

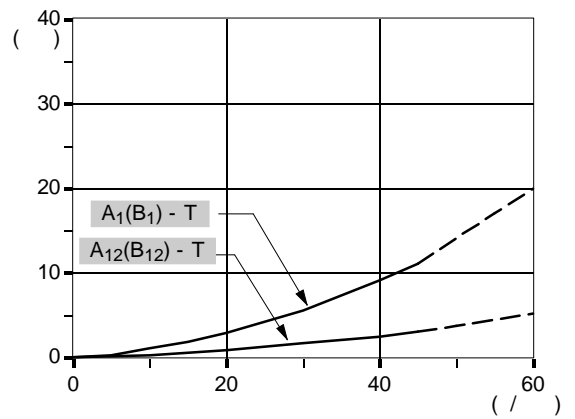
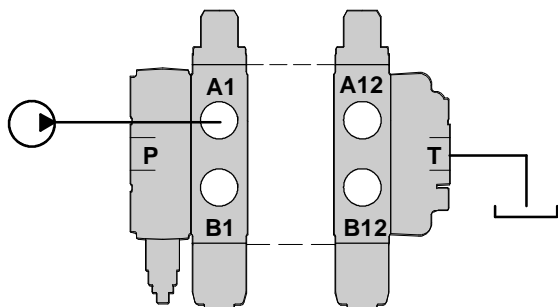




( 1 ) ( 2 )

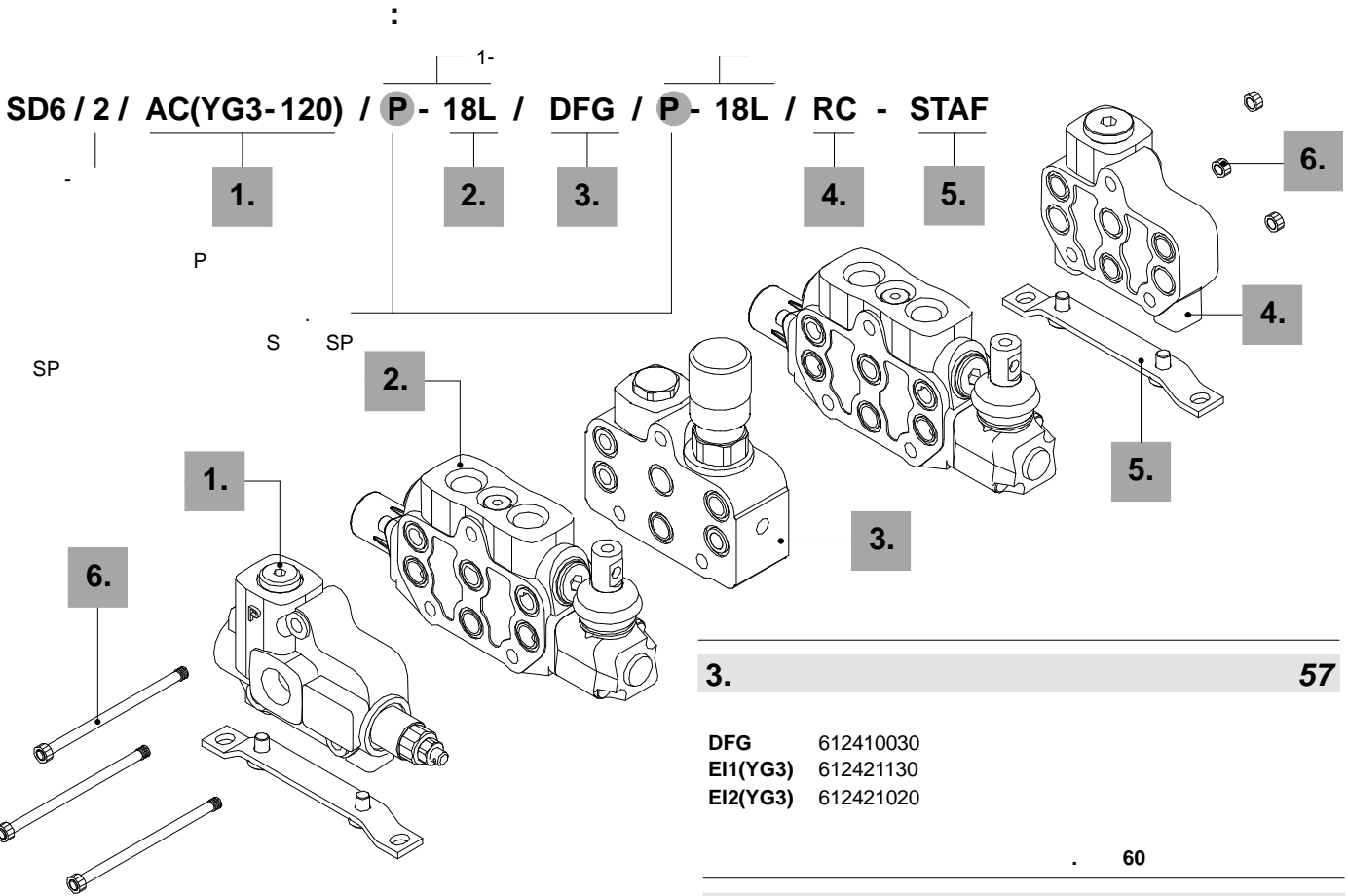


( 2 ) ( 1 )



: 1

# SD6



## 1. 12

AC(JG3-120)	612201171	VMDJ
AC(YG3-120)	612201110	VMDY
AD(YG3-120)	612201120	VMDY

17

## 2. 20

P-18L	612101001
S-18L	612111001
SP-18L	612121001

## 3. 57

DFG	612410030
EI1(YG3)	612421130
EI2(YG3)	612421020

60

## 4. 61

RC	612300110	
RD	612300120	
RE	612300114	"carry-over"
RK	612300117	

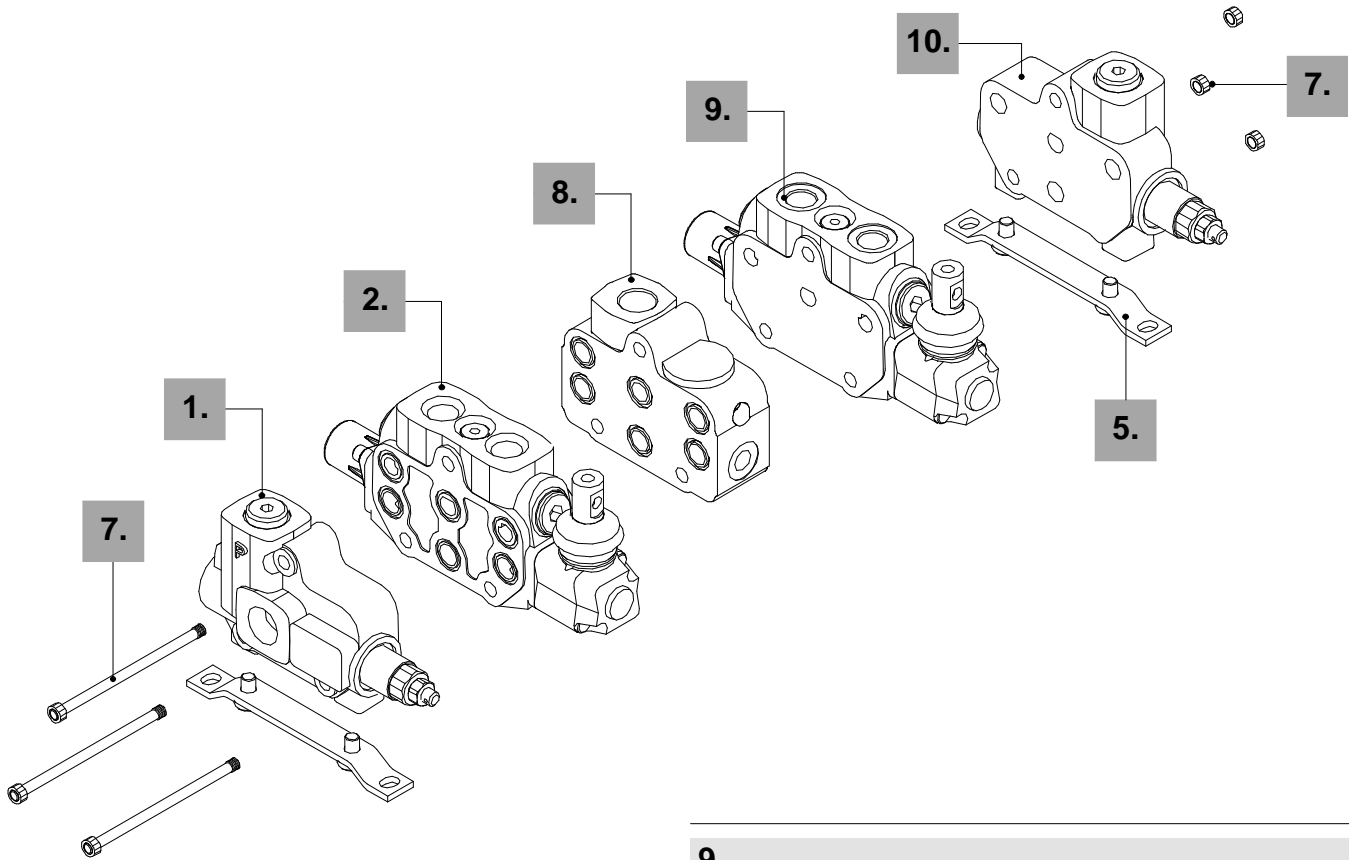
## 5. 66

STAF	5STA120160
------	------------

## 6. 66

5TIR108117	1
5TIR108155	2
5TIR108193	3
5TIR108231	4
5TIR108269	5
5TIR108307	6
5TIR108345	7
5TIR108383	8
5TIR108421	9
5TIR108459	10
5TIR108497	11
5TIR108535	12

SD6 / 2 / AC(YG3-120) / P - 18L / CS1 / P - ED - 18L / BC(YG3-120) - STAF



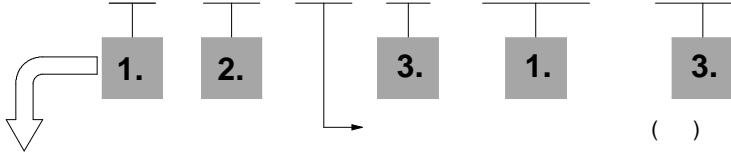
7.		CS1
5TIR108193	2	( SMT) ( CS1)
5TIR108231	3	( CS1)
5TIR108269	4	( CS1)
5TIR108307	5	( CS1)
5TIR108345	6	( CS1)
5TIR108383	7	( CS1)
5TIR108421	8	( CS1)
5TIR108459	9	( CS1)
5TIR108497	10	( CS1)

8.		55
CS1	612400010	G1/2

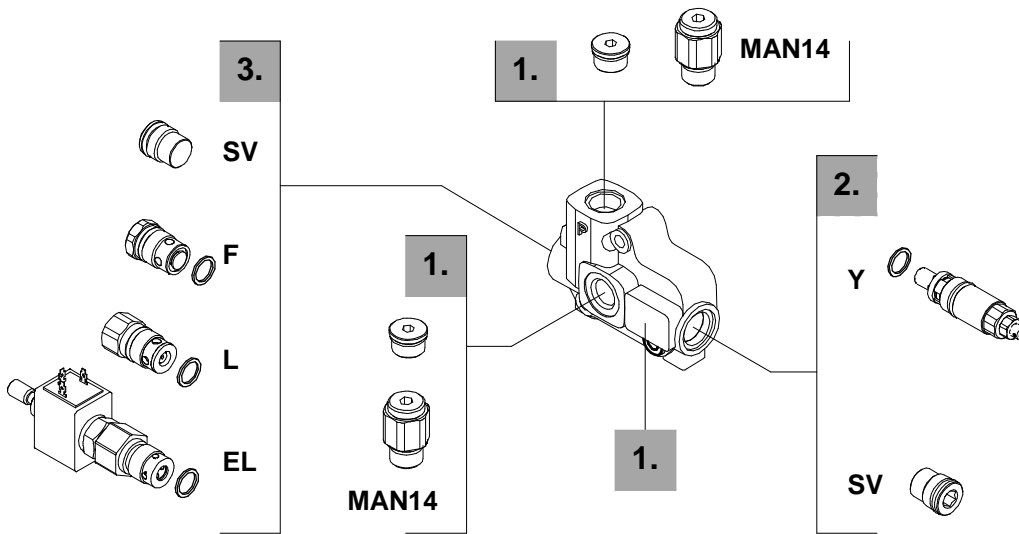
9.	
P-ED-18L	612101048
S-ED-18L	612111017
SP-ED-18L	612121003

10.		
BC(JG3-120)	612201117	VMDJ
BC(YG3-120)	612201130	VMDY
BD(YG3-120)	612201115	VMDY

FES D6 / AC (YG3 - 120) EL - MAN1/4 - 12VDC \*



AC: , ( )  
 AD: , ( )  
 BC: ,  
 BD: ,  
 . 13



**1. 13**

3FIA106300+3XTAP722160  
 3FIA106300+5MAN621200 G1/8"  
 3FIA106300+5MAN622320 G1/4"

**3. 15**

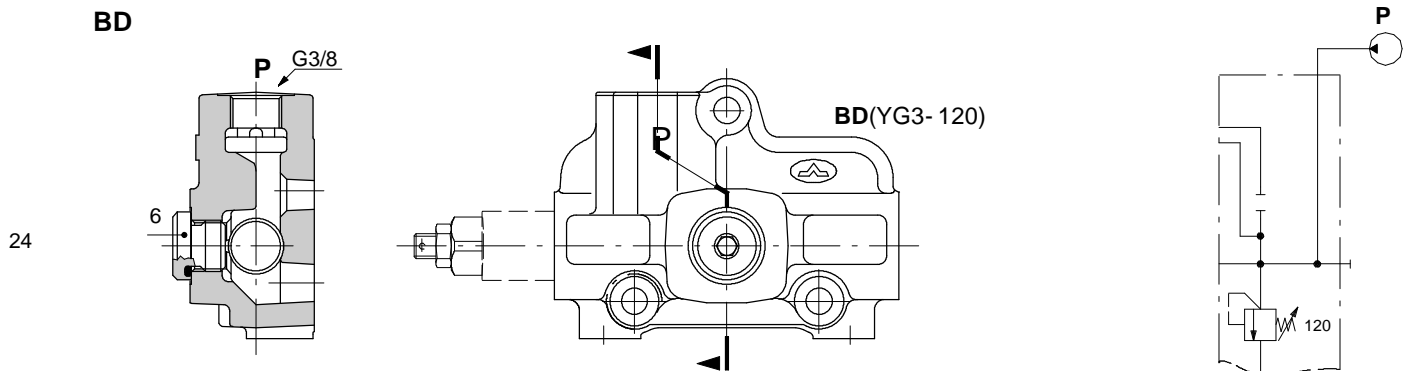
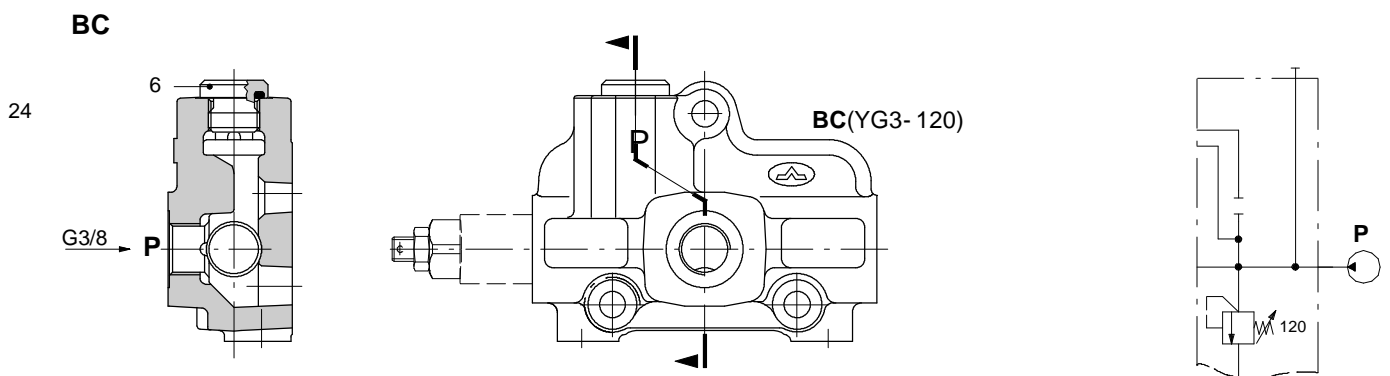
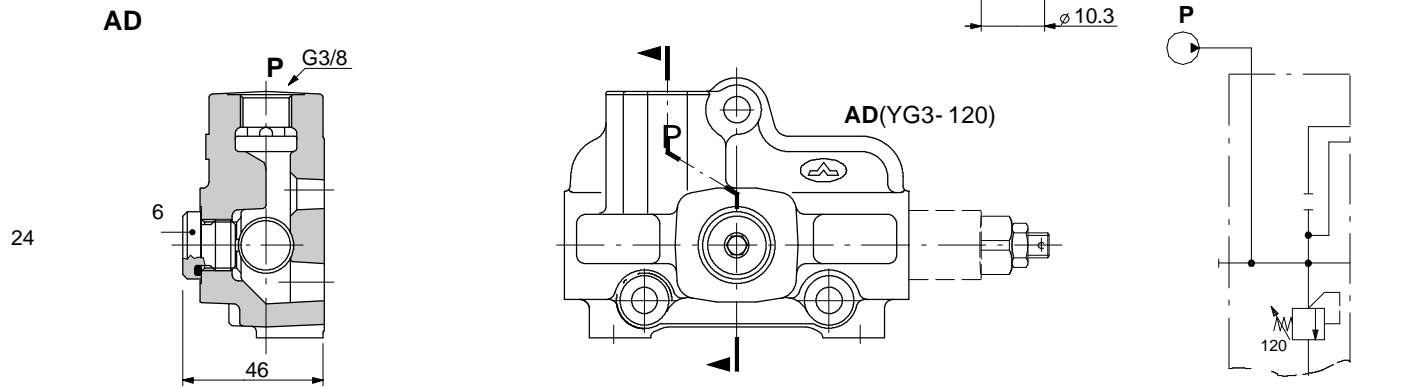
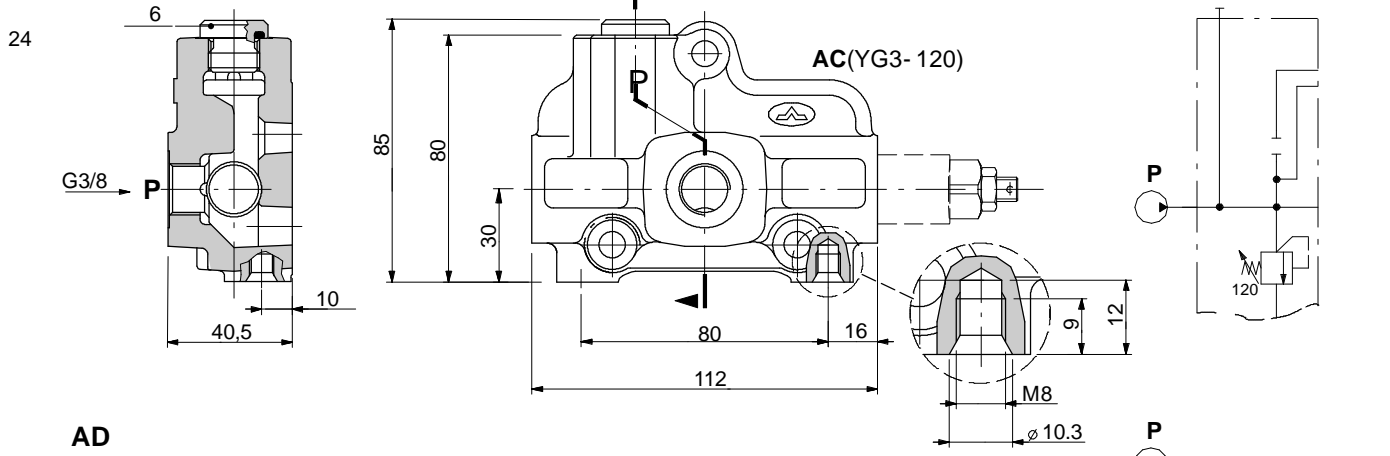
F 5KIT406200  
 L 5KIT406300\*  
 EL 5CAR406305  
 5CAR406310 12 DC  
 5CAR406310 24 DC  
 SV XTAP623282

**2. 14**

VMD5/1		Y	
(YG2)	5KIT105212	63	125
(YG3)	5KIT105213	100	200
(YG4)	5KIT105214	160	315
			250
		10 /	
SV	XTAP623282	( )	
		J	
(JG2)	5KIT105412	40	80
			80
(JG3)	5KIT105413	63	200
			120
(JG4)	5KIT105414	160	315
			220

: (\*) - BSP.

( )



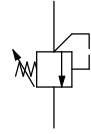
# SD6

## VMD5 ( Y G 3 - 120 )

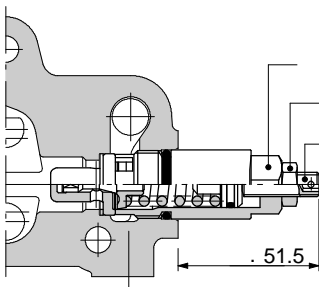
(1, 2, 3)

(G, H)

8)

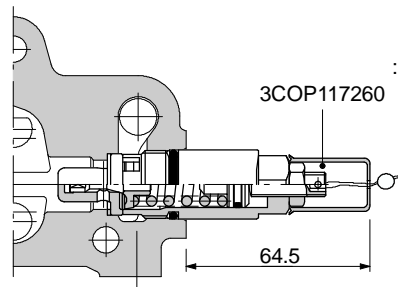


**G:**

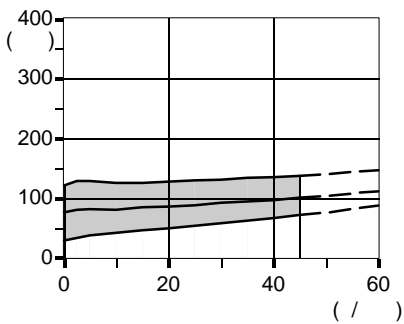


- 42  
13 - 24  
4

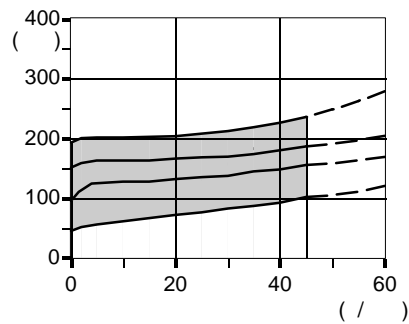
**H:**



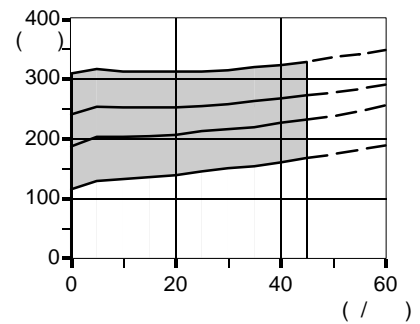
**2 ( )**



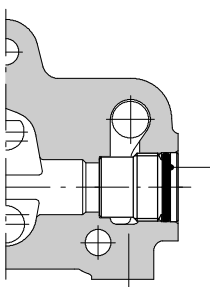
**3 ( )**



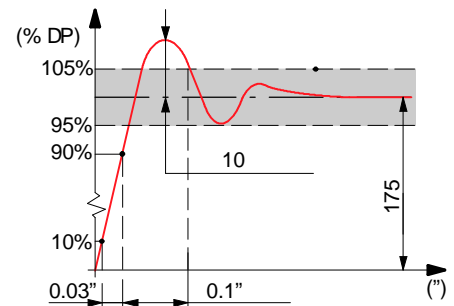
**4 ( )**



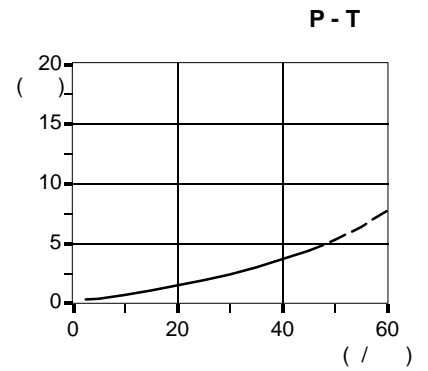
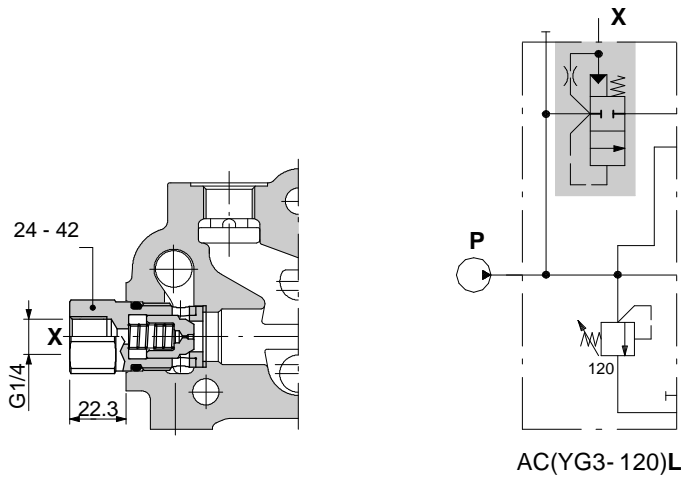
## SV: ( )



10 - 42

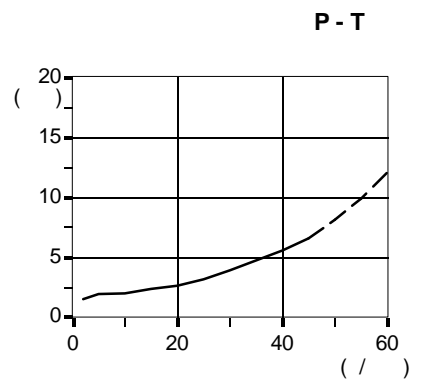
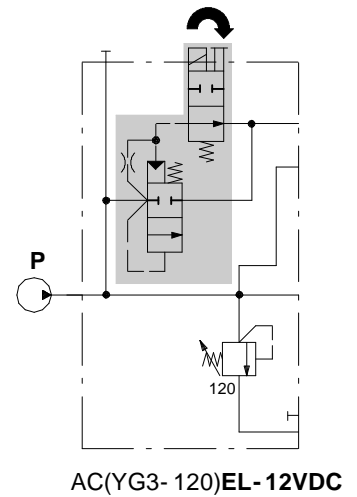
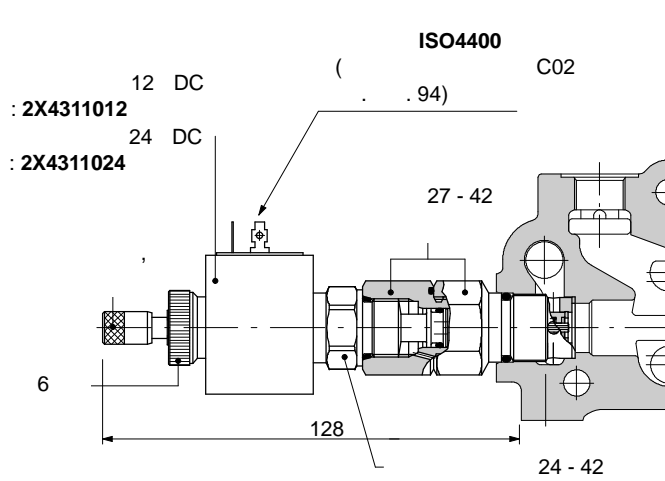


L

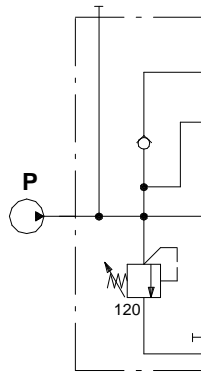
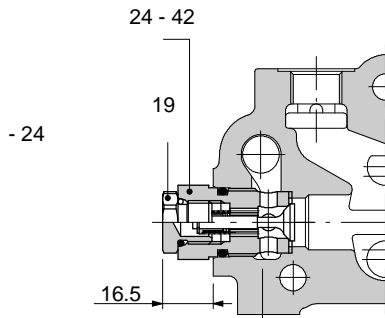


:  
..... 10 c <sup>3</sup>/ 100

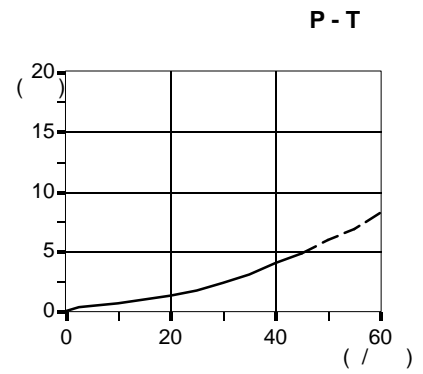
EL



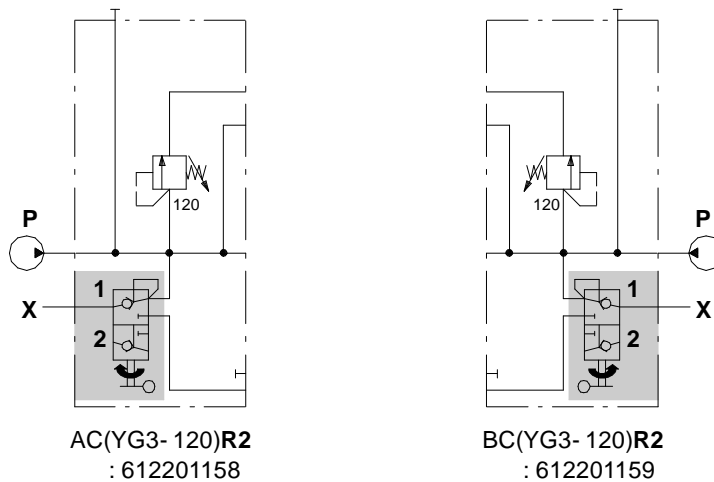
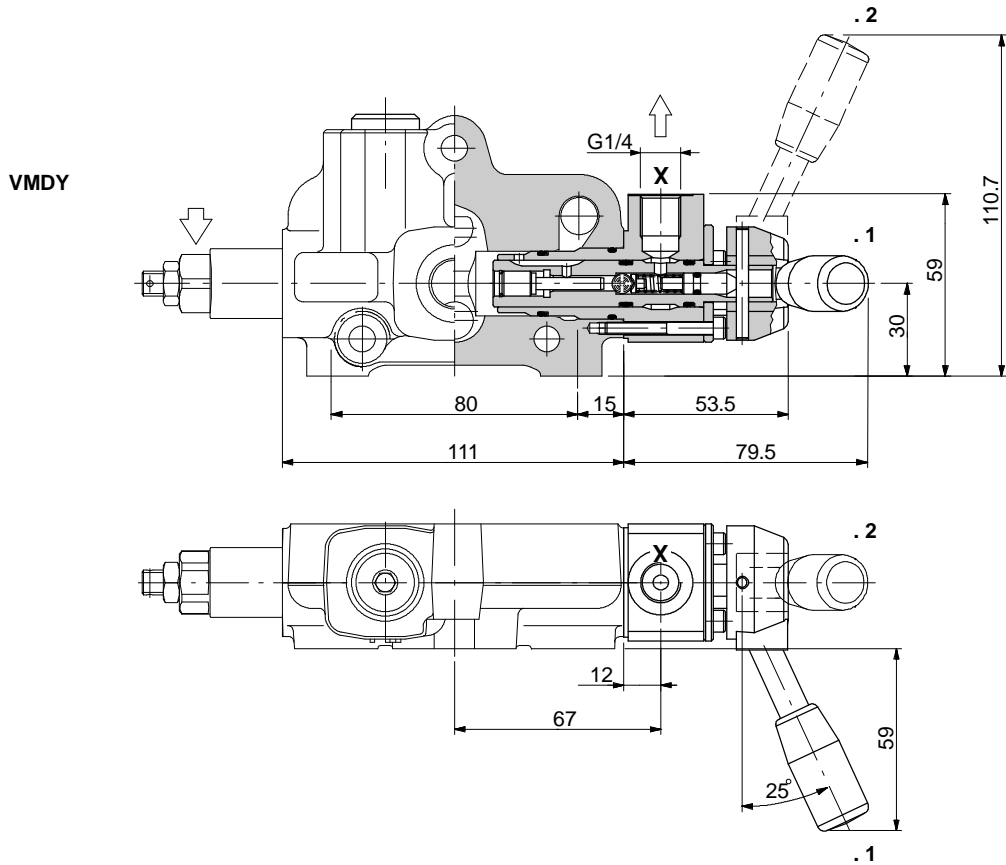
:  
: ±10%  
: 19  
..... : 1.58 A - 12 DC  
..... : 0.81 A - 24 DC  
..... : F  
..... : IP65  
..... : 100%



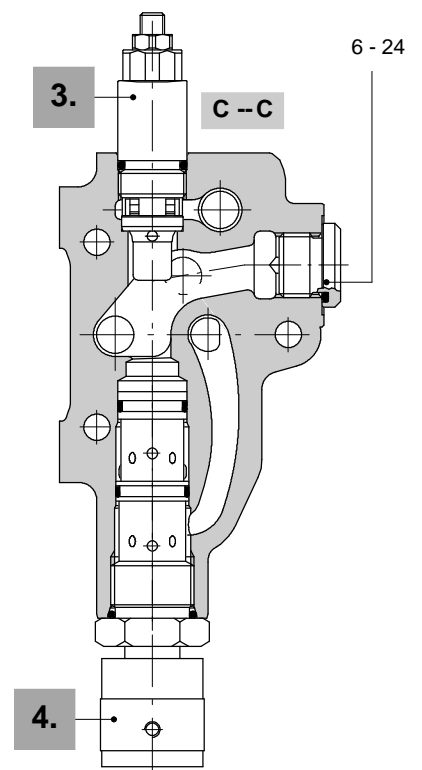
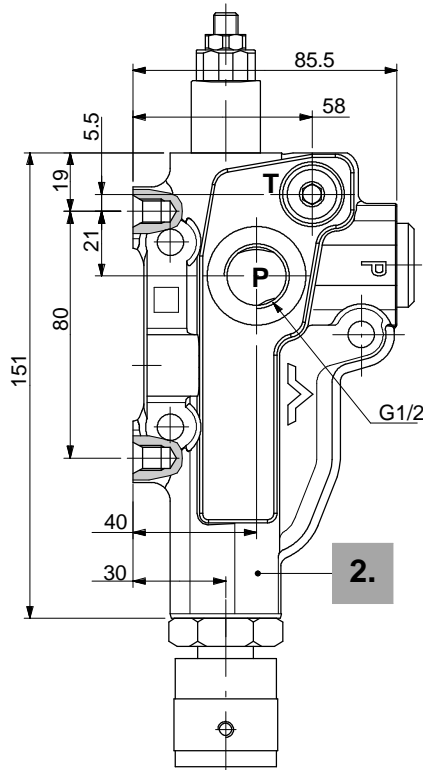
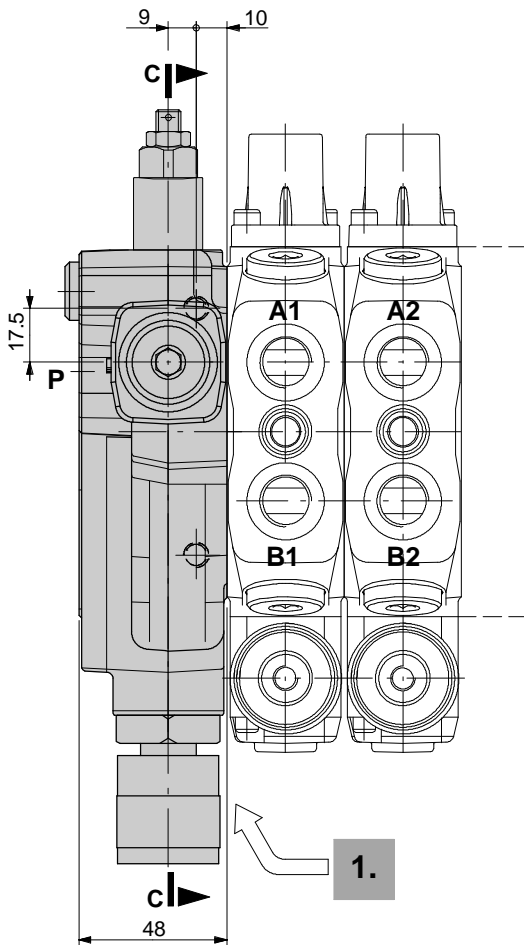
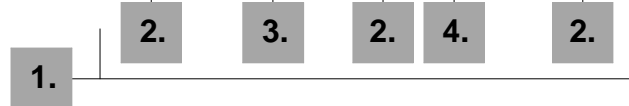
AC(YG3- 120)F







: FES D6 / AC (YG3-120) S N - BSP1/2

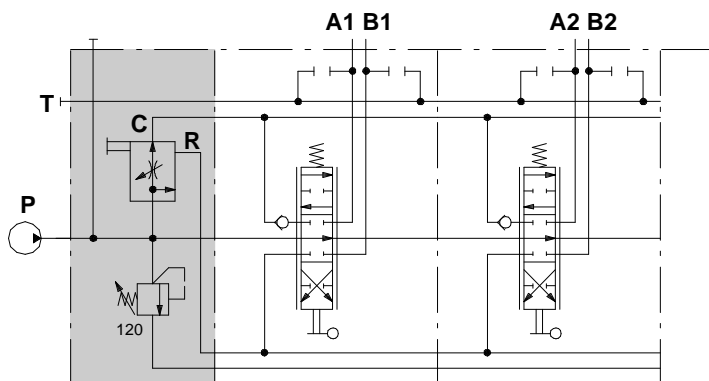


1.

: AC(YG3-120)SN-BSP1/2  
612202015

N

VMDY



SD6/4/AC(YG3-120)SN/18L/18L/...-BSP12(PT)38(AB)

2.

: 3FIA106475+3XTAP719150+3XTAP727180  
: AC - AD - BC - BD, P G1/2,

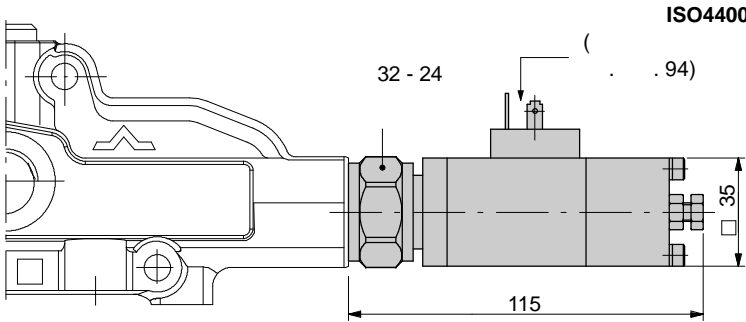
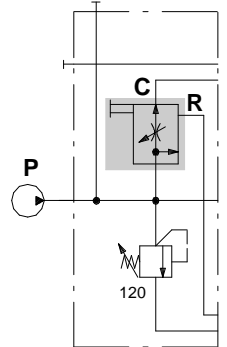
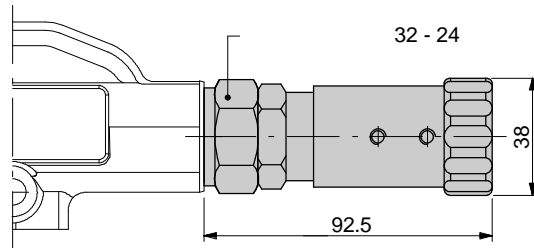
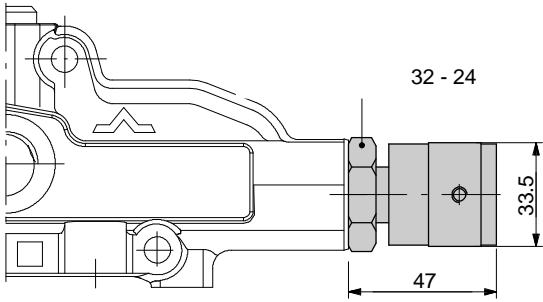
3.

Y J, . .12

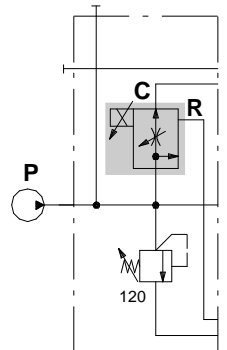
4.

M 2S0PP12002000  
N 2S1636030210  
W2 2S0PP12002015

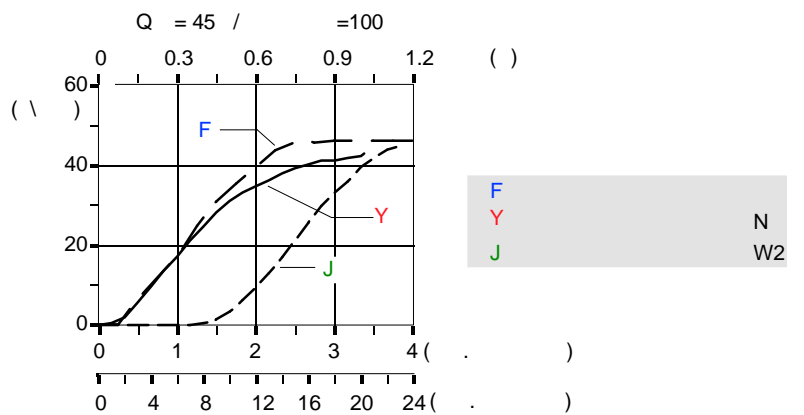
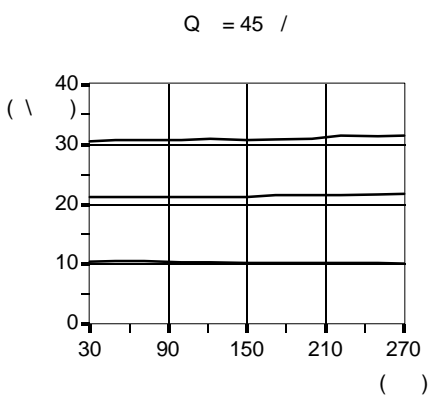
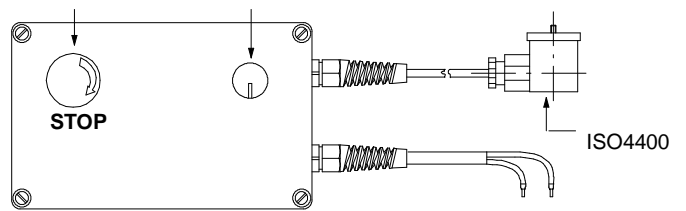
12 DC



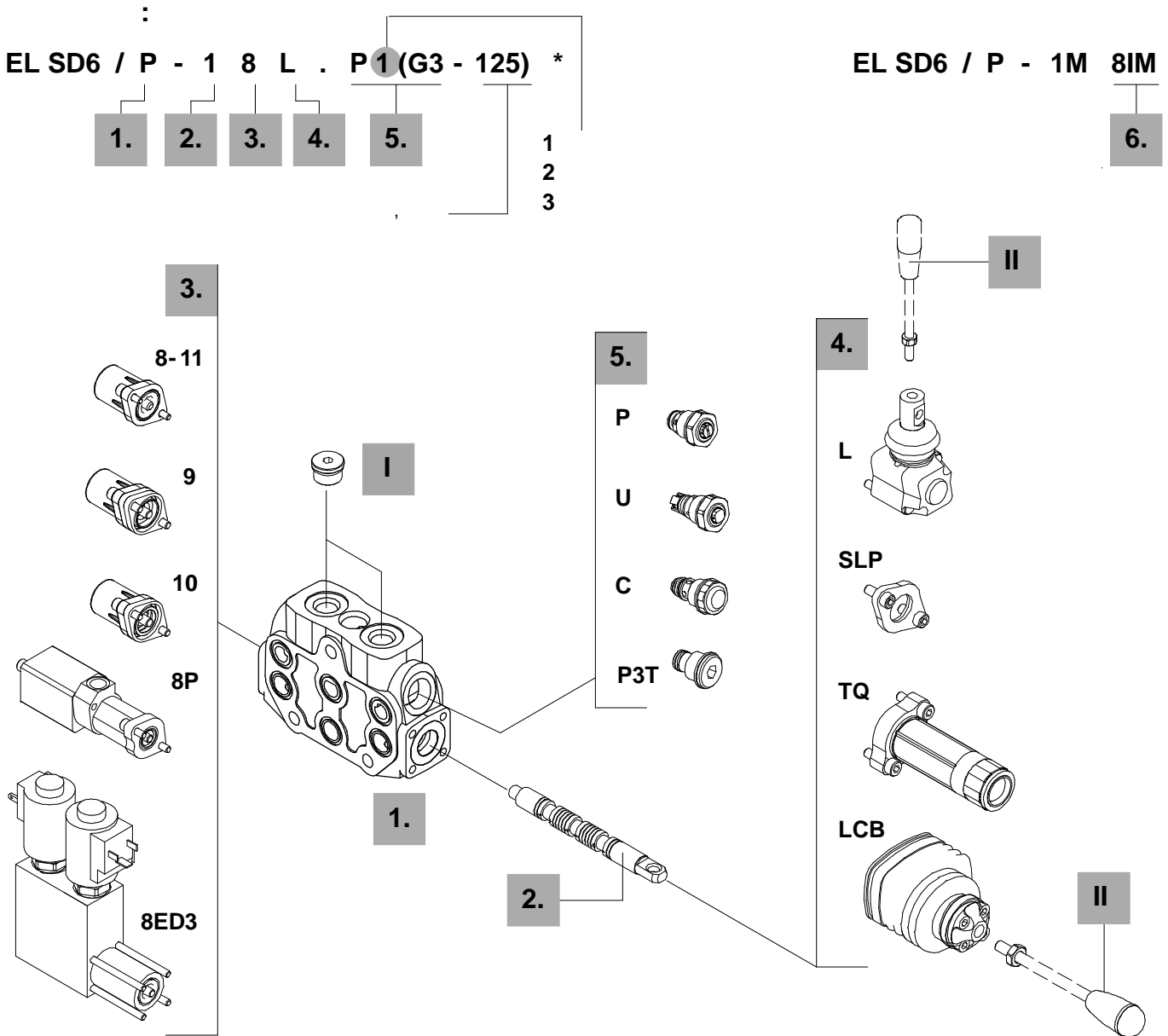
: 12 DC  
: 17,4  
: 100%



UPA UPA12/100/SC01B22



# SD6



## 1 22

P 5EL1063001  
 S 5EL2063001  
 SP 5EL3063001

## 2. 23

1 3CU2210130 , 3-  
 1CS 3CU2210210 , 3-  
 1A 3CU2221130 , 3-

## 2. 23

1B 3CU2222130 , 3-  
 2 3CU2225130 , 3-  
 3 3CU2231130 , 3-  
 4 3CU2235130 , 3-  
 " " 27  
 5Y 3CU2242140 , 4- 3, "  
 5BY 3CU2243130 , 4- 3, "  
 8 3CU2262100 , 4-

**3. “ ” 30**

<b>7FT</b>	5V07405000			
<b>8</b>	5V08105000			
<b>8D</b>	5V08105200			
<b>8D2</b>	5V08105220		6	
<b>8F2</b>	5V08105101		8	
<b>19</b>	5V19105000 2-			1
<b>20</b>	5V19105000 2-			2
<b>9B</b>	5V09202010	1-		
<b>10B</b>	5V10202010	2-		
<b>11B</b>	5V11202010	1- 2-		
<b>8MG3</b>	5V08105660		1 2	
<b>8EM2</b>	5V08106580			
		12 DC		2
	5V08106590	, 24 DC		
<b>8MHE3(NC)</b>	5V08106541			
		ON/OFF,		
<b>8MHE3(NO)</b>	5V08106540			
<b>8P</b>	5V08105701	ON/OFF		
<b>8EP3</b>	5V08105735	ON/OFF	12 DC	
	5V08105740	ON/OFF	24 DC	
<b>8ED3</b>	5V08105350	ON/OFF	12 DC	
	5V08105351	ON/OFF	24 DC	
			27	
<b>13NZ</b>	5V13305010	4-		
			3;	<b>5Y</b>
<b>13QN</b>	5V13405020	4-		<b>5BY</b>
			3;	
<b>13F</b>	5V13506100	4-		<b>8</b>
			;	

**4. “ ” 38**

<b>L</b>	5LEV105000			
<b>LM10</b>	5LEV205000		10	
<b>LF1</b>	5LEV105102			2
<b>LFG5</b>	5LEV105800			
		1 2		
<b>LB1</b>	5LEV305100			
<b>LB3</b>	5LEV305000			
<b>SL</b>	-			
<b>SLP</b>	5COP105000			
<b>SLCZ</b>	5COP205030			
<b>LEB</b>	5LEV605000			
<b>LUP</b>	5LEV805005			
<b>TQ</b>	5TEL105110		CD	
<b>LCB</b>	5CLO206100		2-	

**5. 50**

<b>P(G2)</b>	5KIT206112	50	125	
				63
<b>P(G3)</b>	5KIT206113	100	200	
				100
<b>P(G4)</b>	5KIT206114	160	315	
				200
<b>U(G2)</b>	5KIT306112	50	125	
				63
<b>U(G3)</b>	5KIT306113	100	250	
				100
<b>U(G4)</b>	5KIT306114	160	315	
				200
			10 /	
<b>C</b>	5KIT406100			
<b>P3T</b>	XTAP524280			
<b>BP1</b>	612002000*			
<b>BP2</b>	612002000*			
<b>BP3</b>	612002100*			
<b>BP</b>	XCAR605110			
<b>BPS1</b>	612003000*			
<b>BPS2</b>	612003000*			
<b>BPS3</b>	612003100*			
<b>BPS</b>	XCAR605210			
<b>BPT</b>	XTAP627300	BP	BPS	

**6. 44**

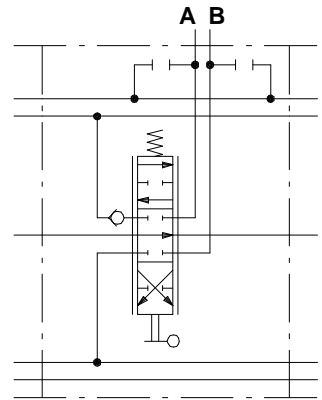
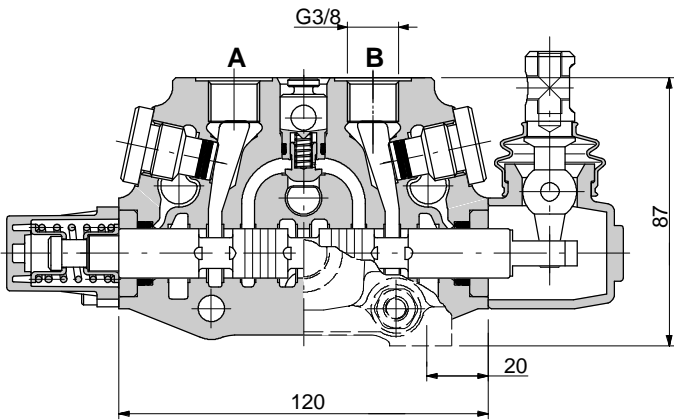
ON/OFF

**I “ ” “ ”**

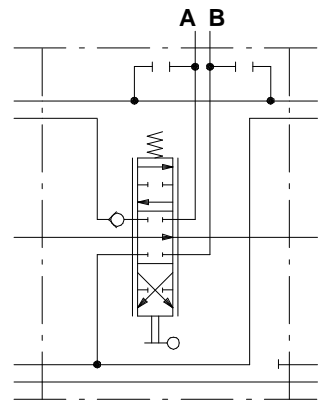
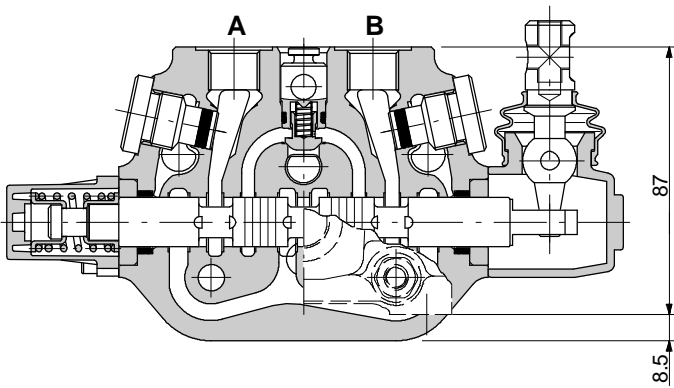
<b>G3/8</b>	3XTAP722160
-------------	-------------

**II**

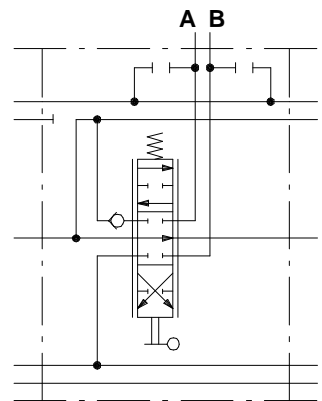
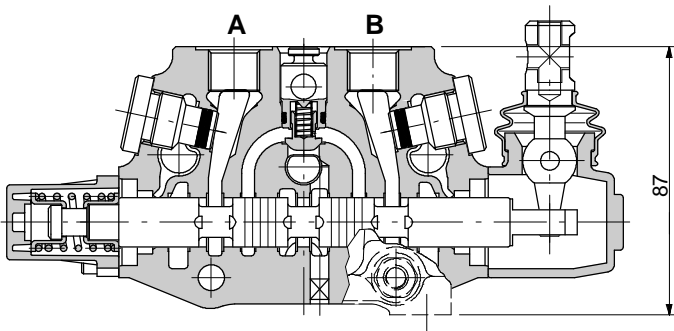
<b>AL01/M8x150</b>	170011215	L,	150
<b>AL01/M10x150</b>	170012015	Lm10 LFG5,	
		150	
<b>AL08/M12x200</b>	170013120	LCB,	200



P-18L

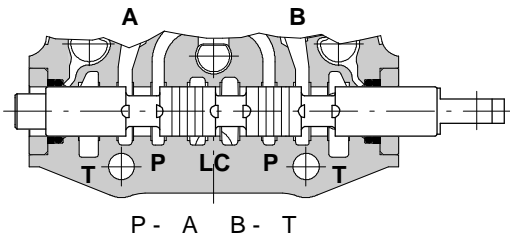


S-18L

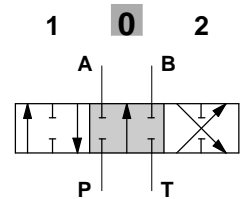
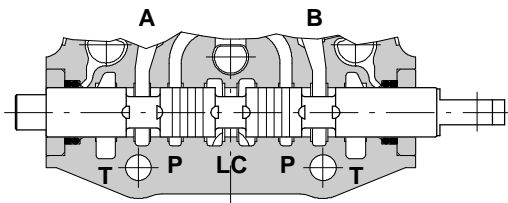
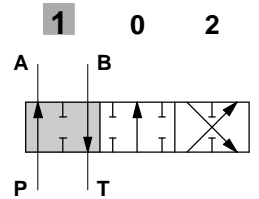


SP-18L

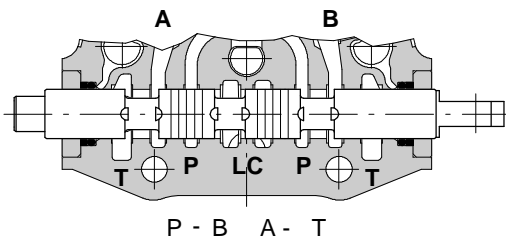
1



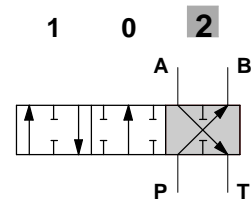
- +5.5



P - A - B - T

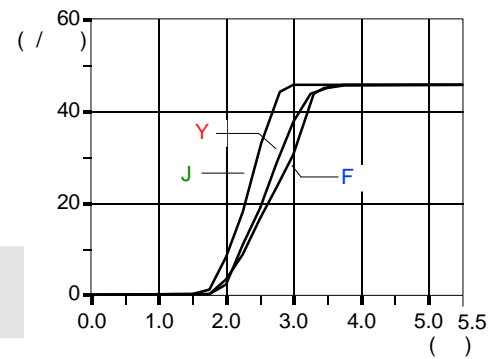
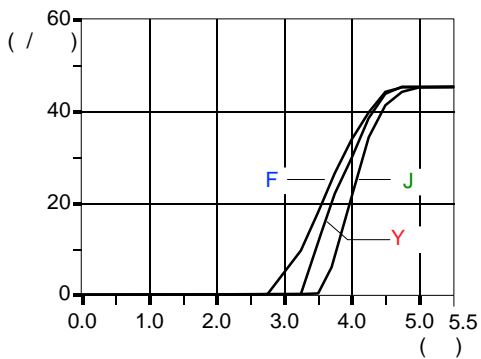


- -5.5

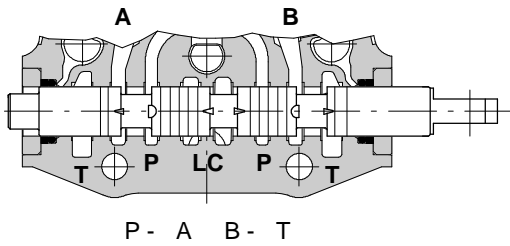


P - A(B)

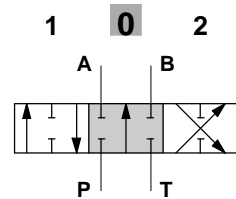
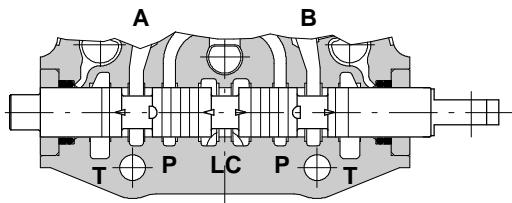
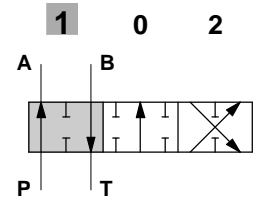
A(B) - T



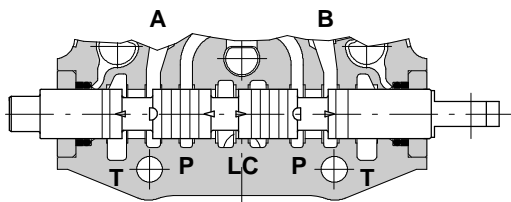
## 1CS



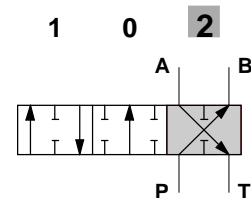
- +5.5



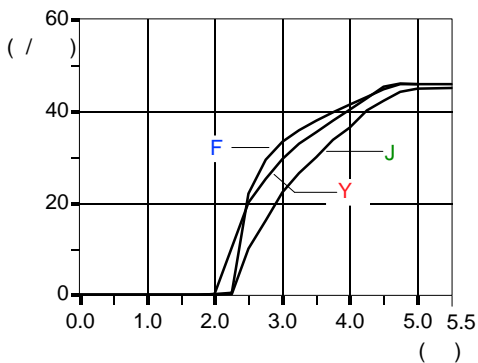
P - A - B - T



- -5.5



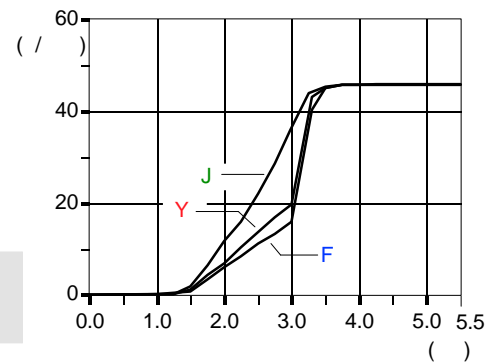
P - A(B)



Q = 45 /

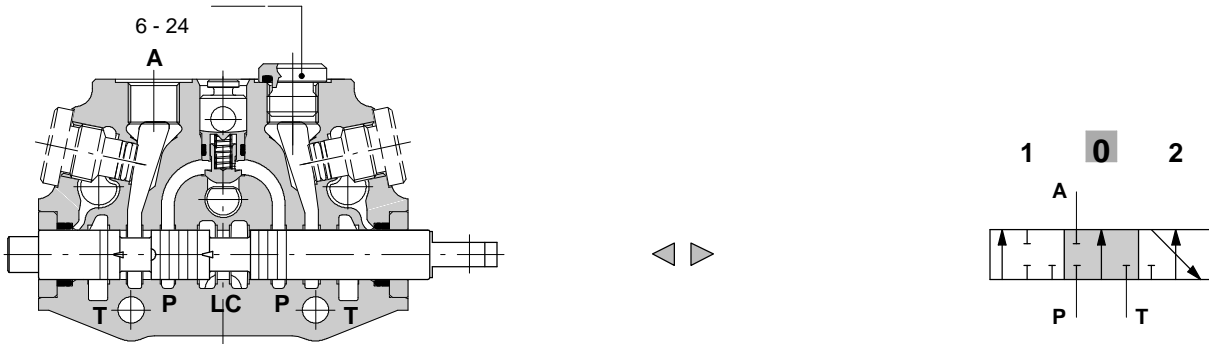
- F P<sub>t</sub> = 63
- Y P<sub>t</sub> = 100
- J P<sub>t</sub> = 250

A(B) - T



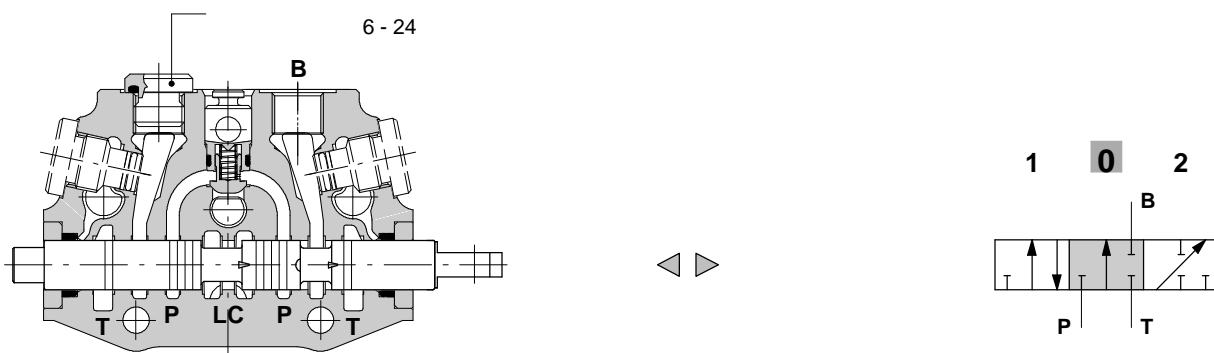


3



P- - - ,

4

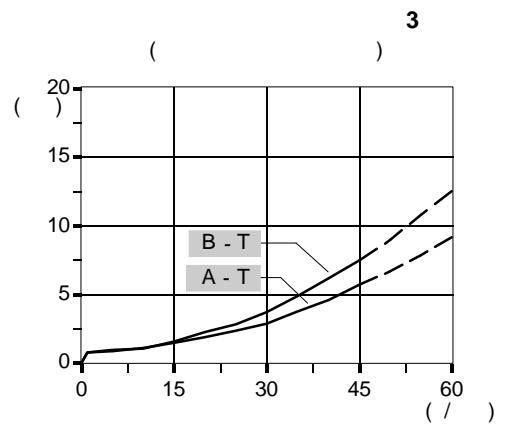
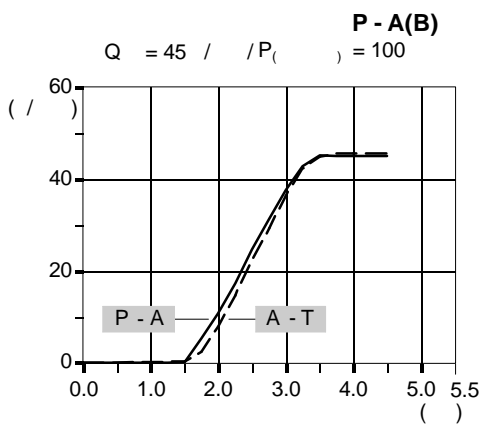
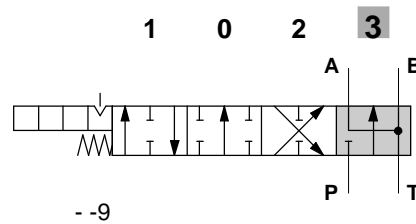
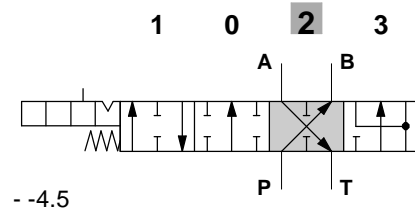
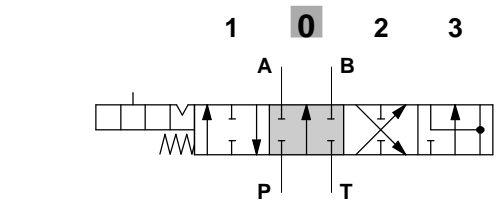
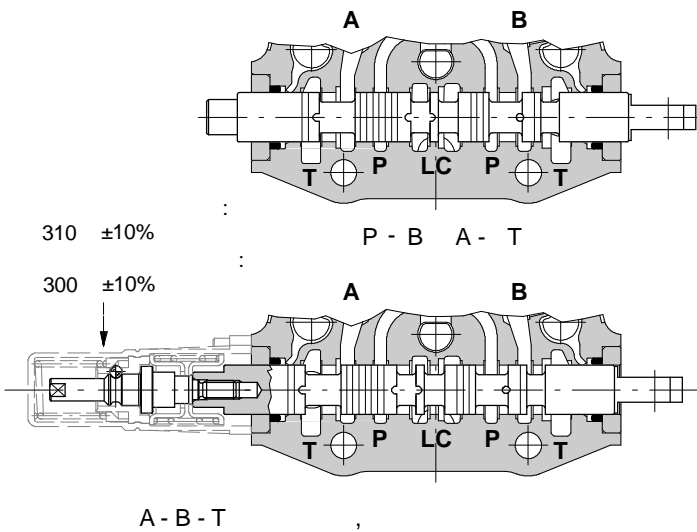
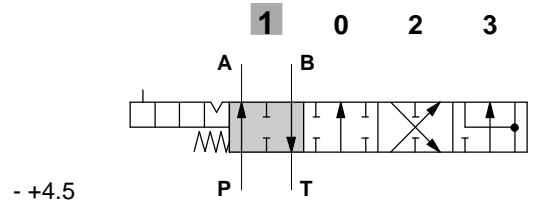
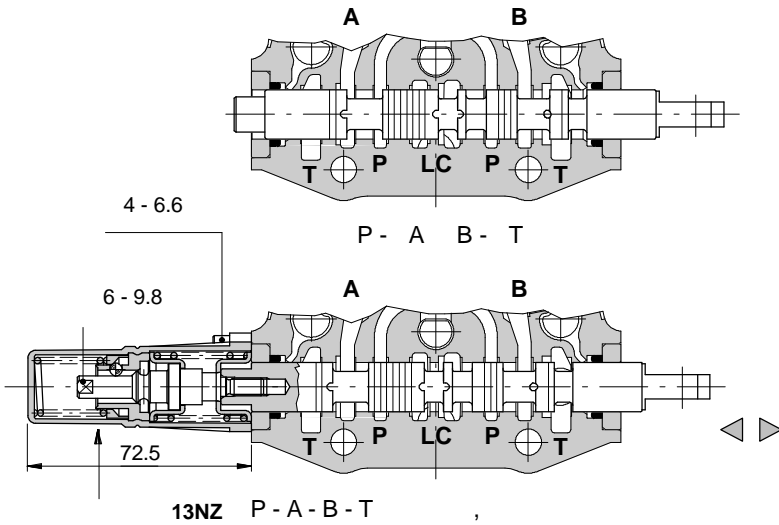


P- - - ,

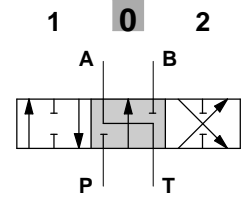
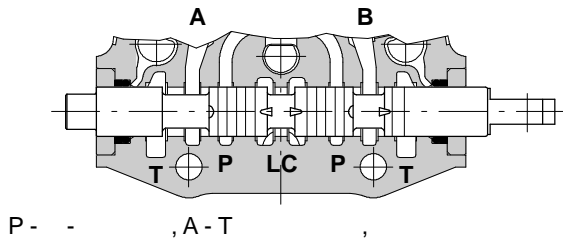
5Y

P - 5Y 5EL1063203.

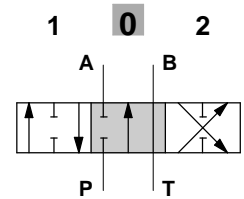
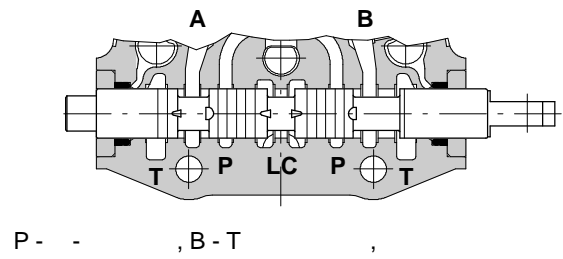
13NZ.



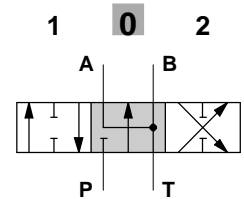
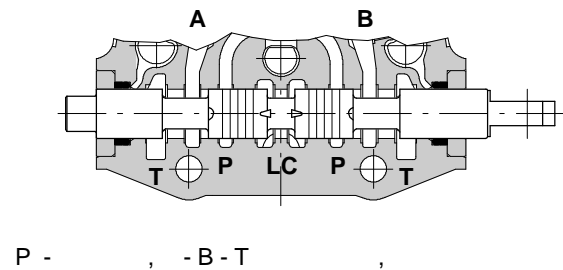
1



1



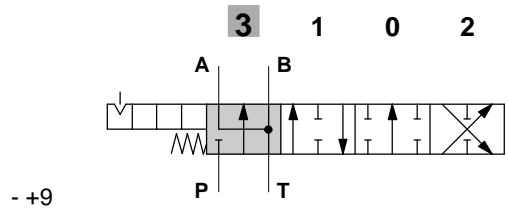
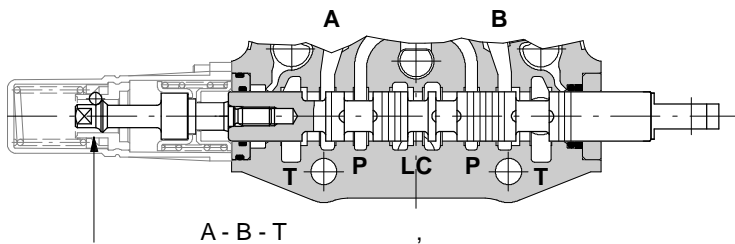
2



## 5BY

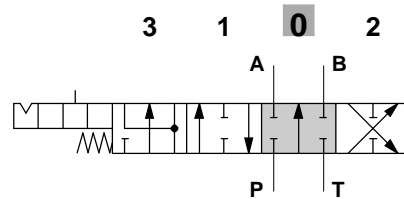
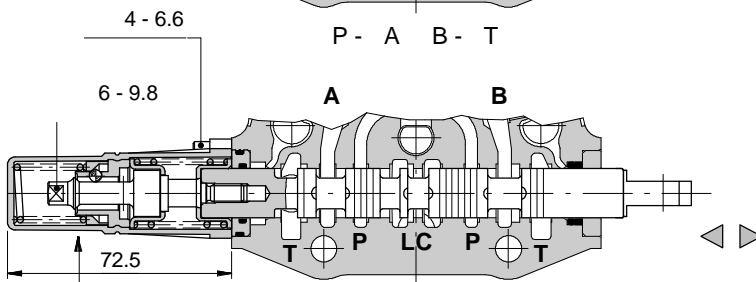
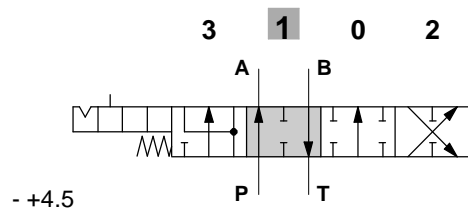
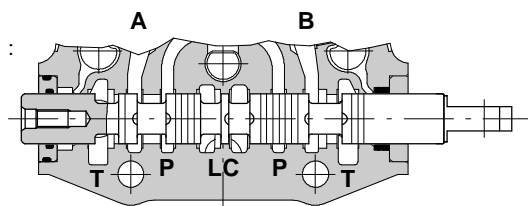
P - 5B 5EL1063205.

13QN.

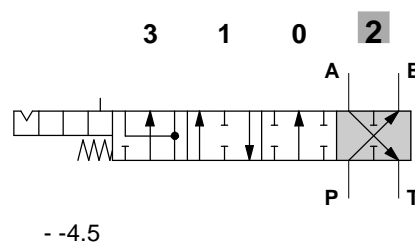
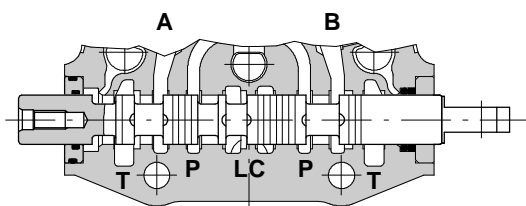


310 ±10%

300 ±10%

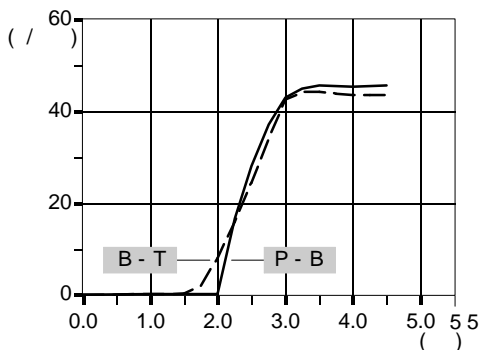


13QN

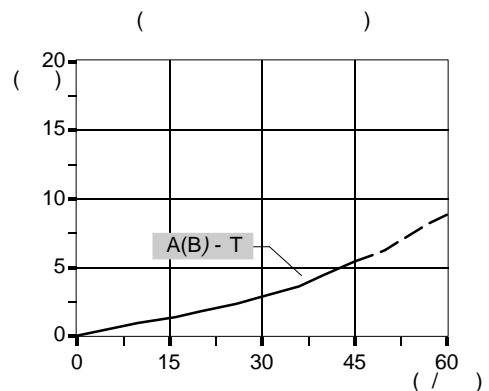


P - A(B)

Q = 45 / / P<sub>c</sub> ) = 100



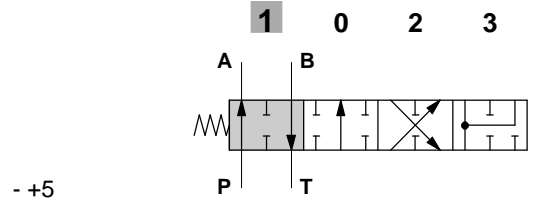
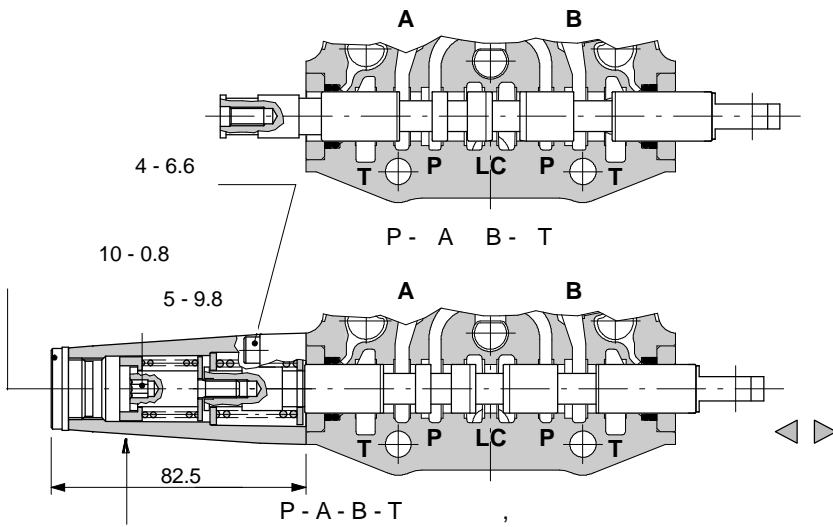
3



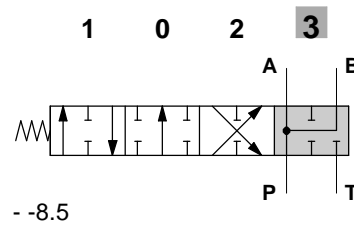
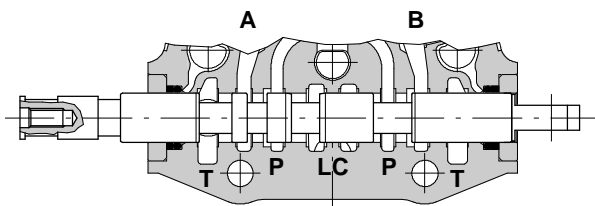
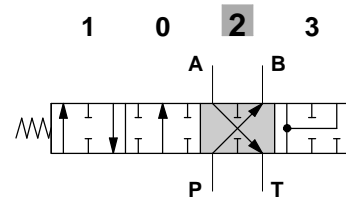
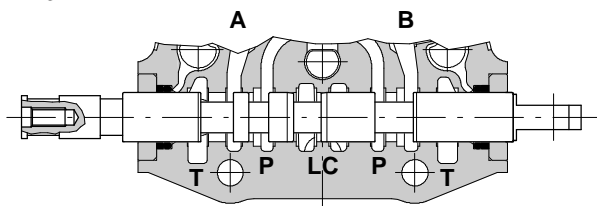
8

P - 8 5EL1063500.

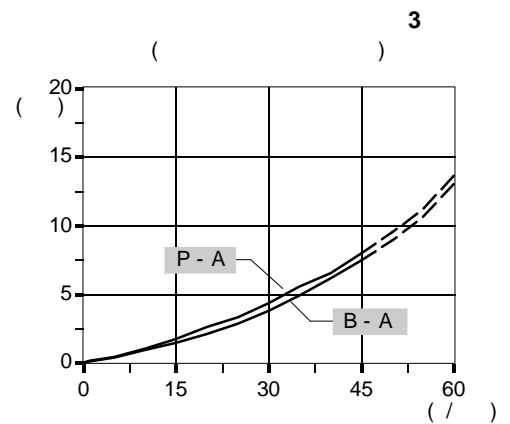
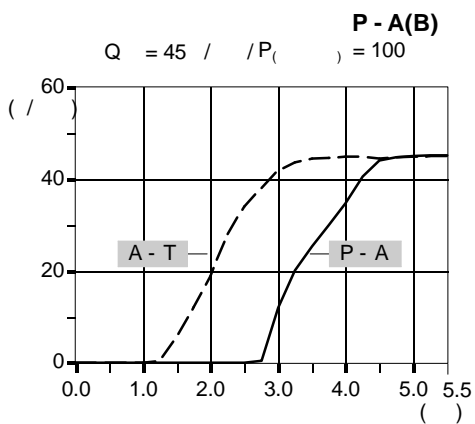
13F.



13F



A - B - P



# SD6

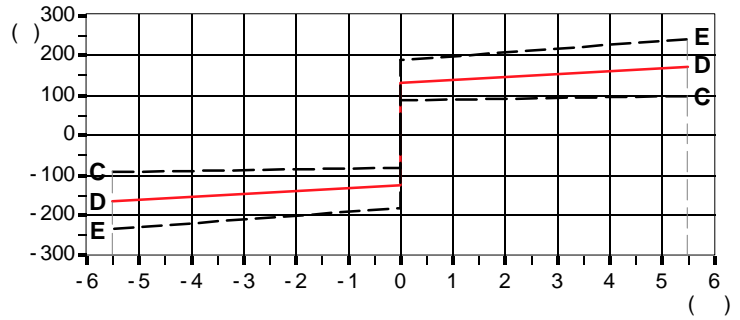
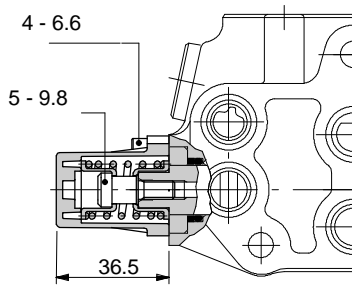
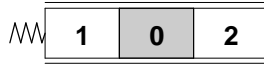
“ ”

8

D ( . ) .

(8MC 5V08205000)

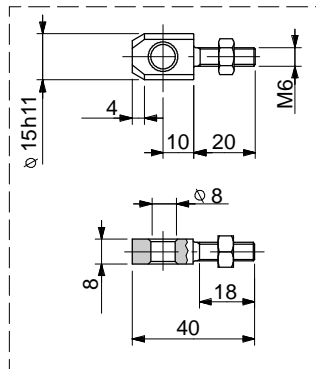
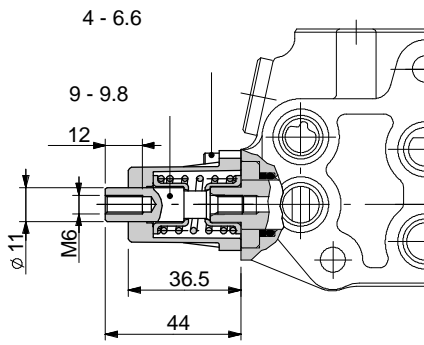
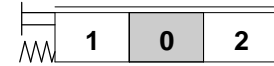
(8ME 5V08405000).



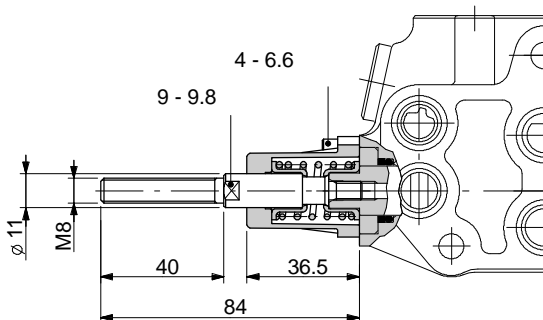
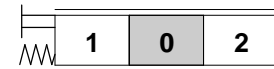
8D

(8DMC 5V08205200);

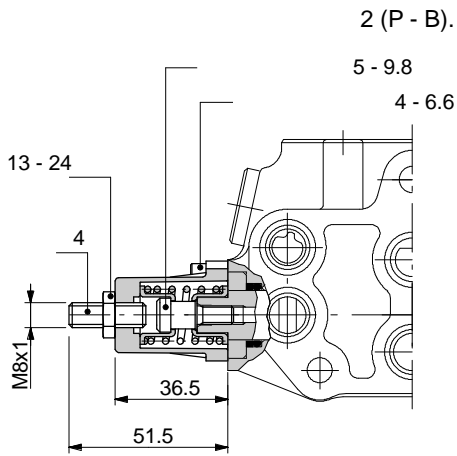
XPER315400



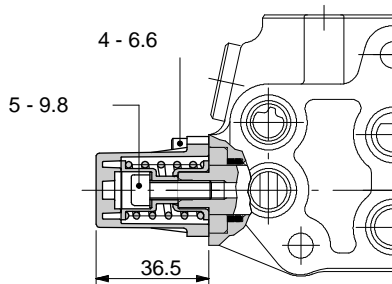
8D2



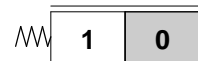
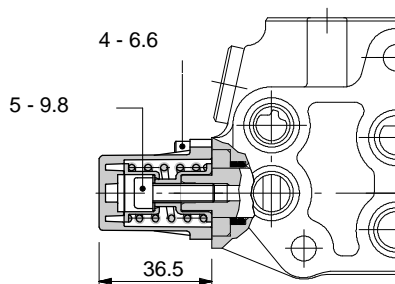
8F2



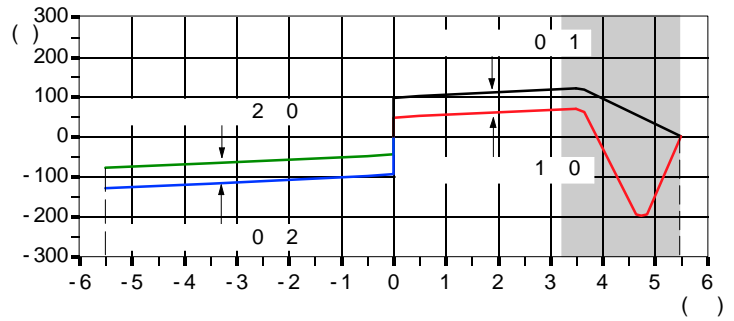
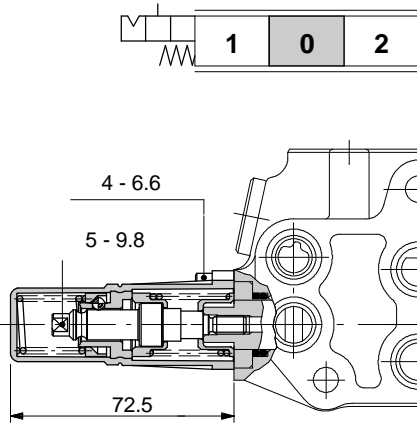
19



20

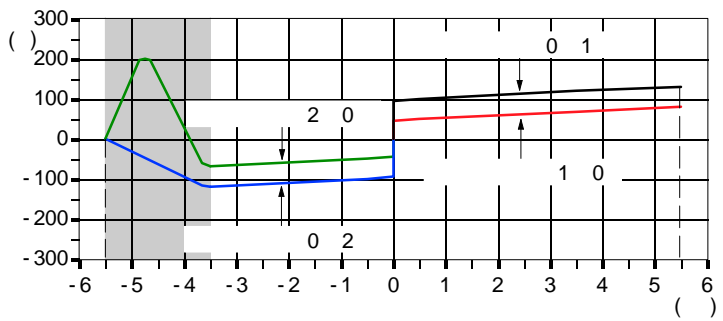
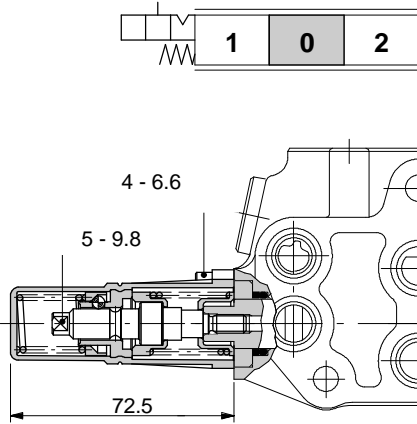


9



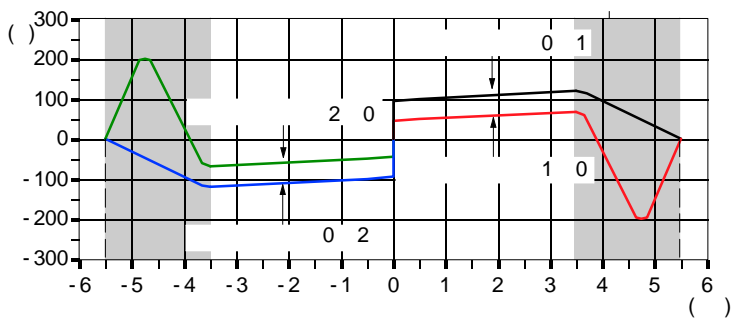
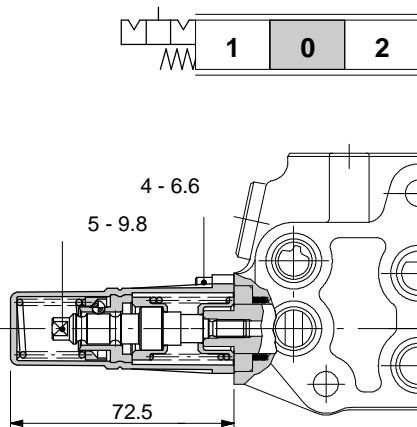
: 200 ±10%

10



: 200 ±10%

11

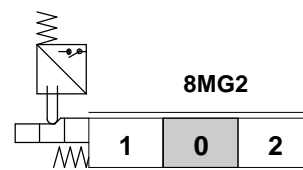
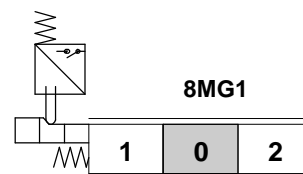
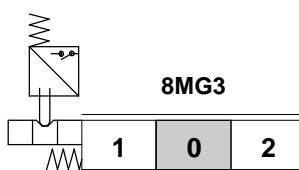
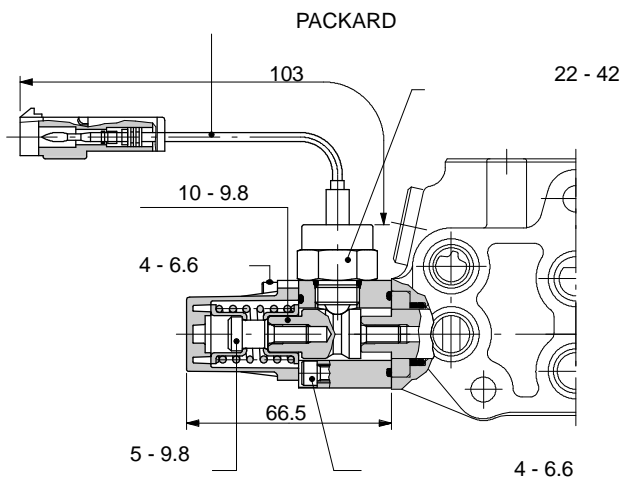


: 200 ±10%



**8MG3 ( - )**

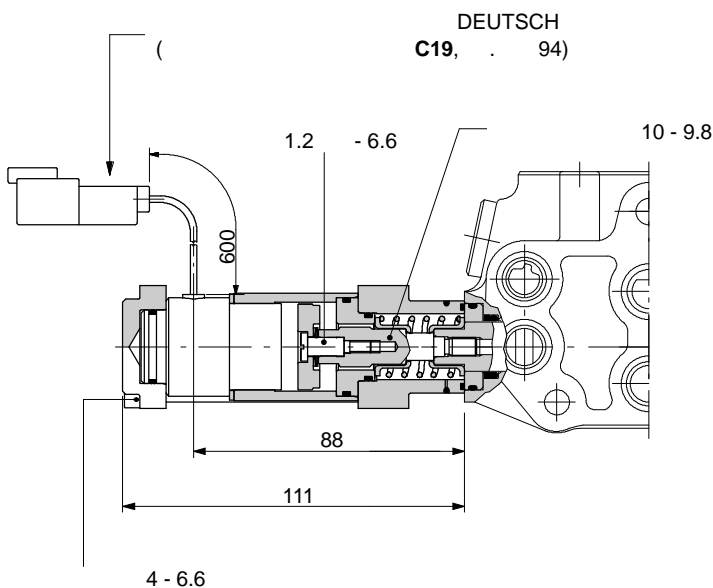
( 2), **8MG1(NO), 5V08105670 ( 1) 8MG2(NO), 5V08105680**  
 8MG3.



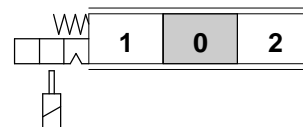
( - (NC) - )  
 4MIC730 - (NO)  
 PACKARD, C07  
 4MIC740 - (NC)  
 PACKARD, C17  
 .94

:  
 : 5x10<sup>5</sup>  
 : 10<sup>5</sup> - 7A / 13,5 DC  
 : 5x10<sup>4</sup> - 10A / 12 DC  
 : 5x10<sup>4</sup> - 3A / 28 DC

**8EM2:**



2.



..... : 12 / 24 DC ± 10%  
 ..... : 4  
 (20 °C) ..... : 36 / 144  
 ..... : 145  
 ..... : 100%

DEUTSCH

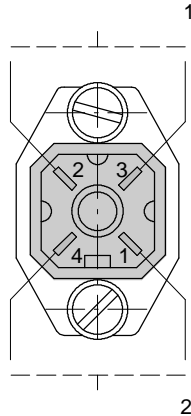
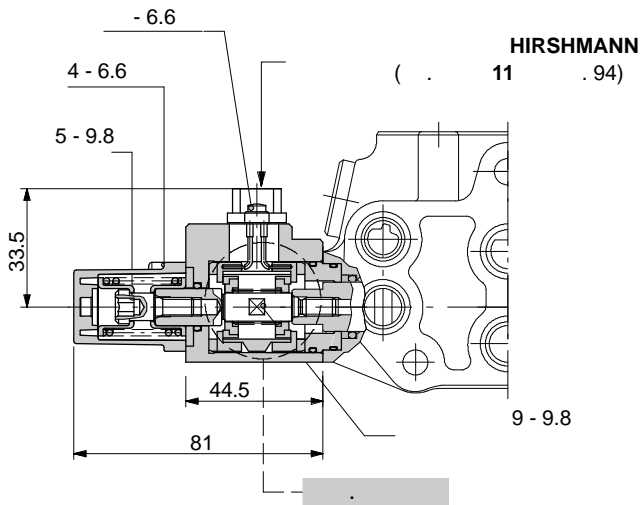
YSOL528465 12 DC  
 YSOL528466 24 DC

## 8MHE3

## ON/OFF

ON/OFF

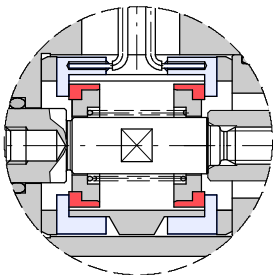
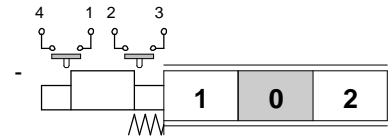
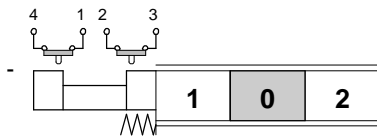
( “ ”).



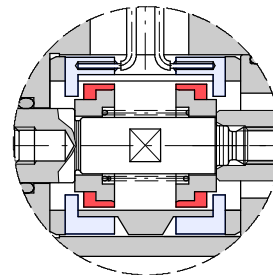
: 12 / 24 DC  
: 500 A  
: IP65

## 8MHE3(NC)

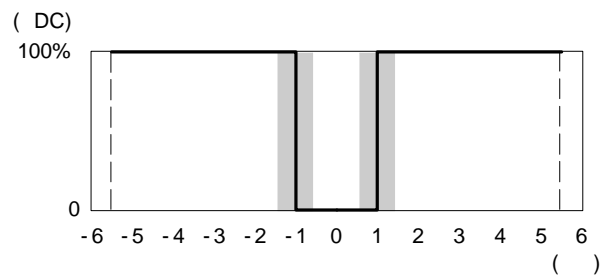
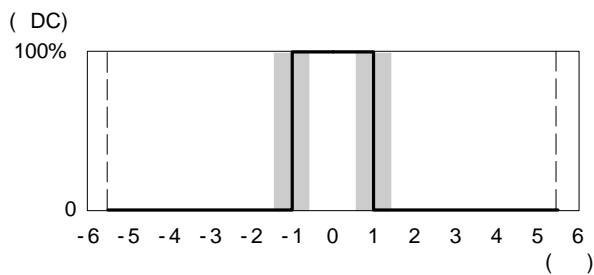
## 8MHE3(NO)



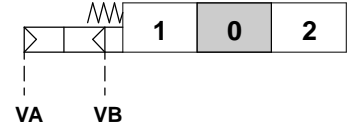
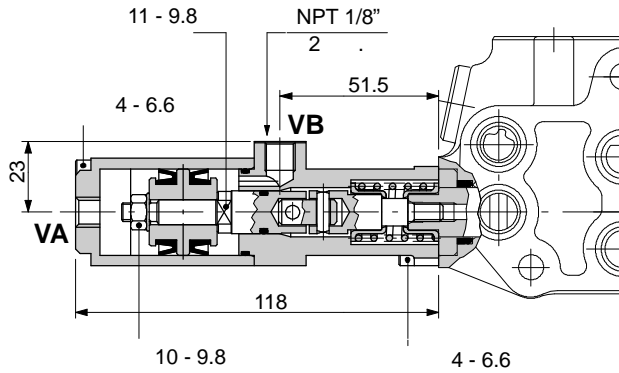
NC



NO

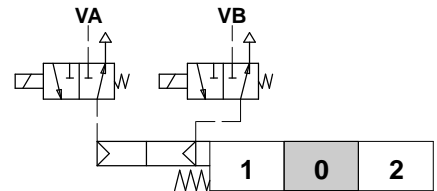
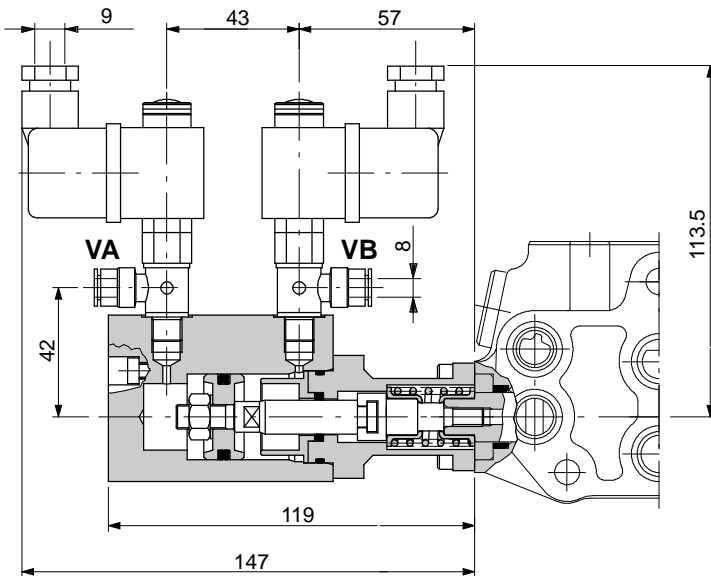


8P ON/OFF

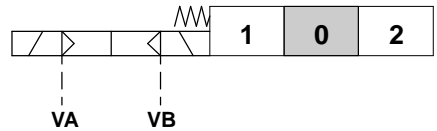


..... : .5.5  
 : .10

8EP3 ON/OFF -



ISO 1219



..... : .6  
 : .10

..... : ±10%  
 ..... : 8  
 ..... : 100%

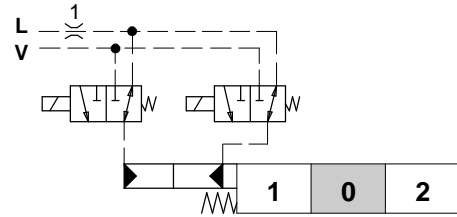
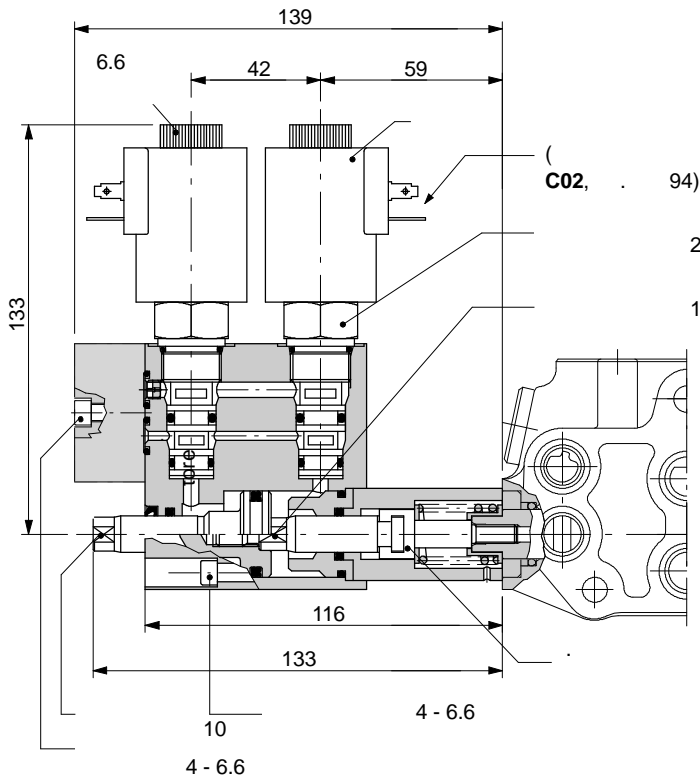
2X4001012  
 2X4001024

12 DC  
 24 DC

# SD6

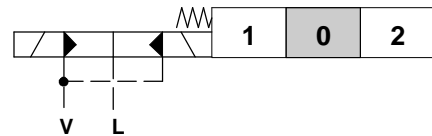
## 8ED3 ON/OFF

ON/OFF



ISO4400

ISO 1219



24 - 9.8

10 - 24

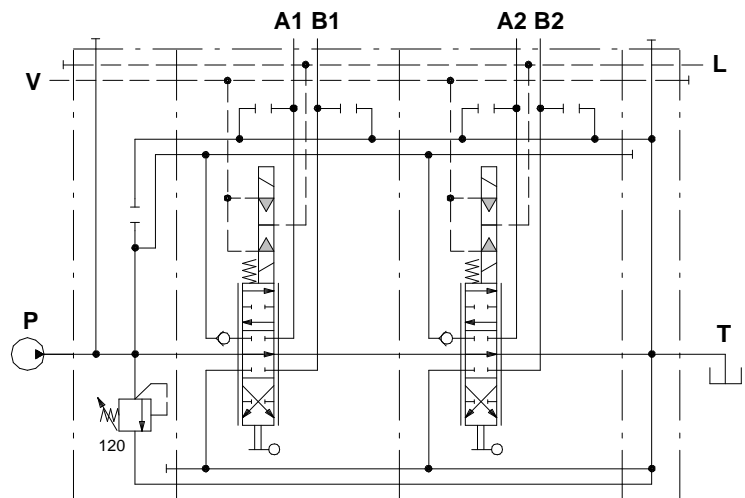
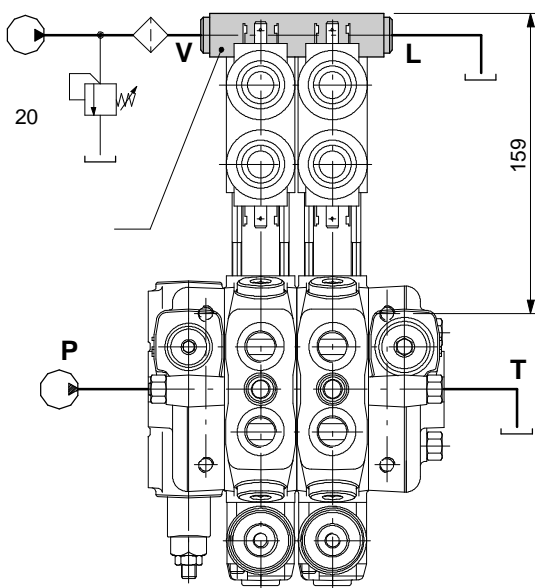
- 9.8

..... : .10  
 : .50  
 M . L : 25  
 : ±10%  
 : 21  
 ..... : 100%

2S0EJ08002013  
 2X4350012  
 2X4350024

3-

12 DC  
 24 DC



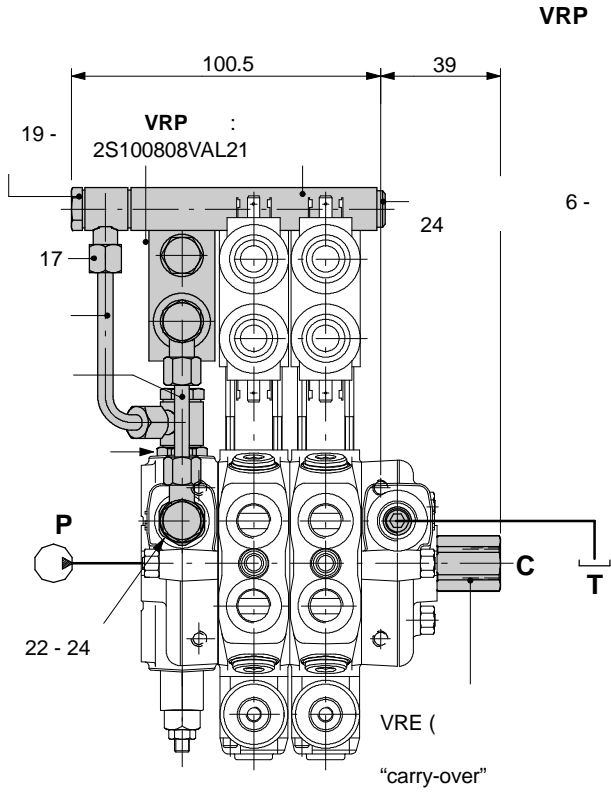
( BSP )

SD6/2/AC(YG3- 120)/18ED3L/18ED3L/RC- KE2S0- 24VDC

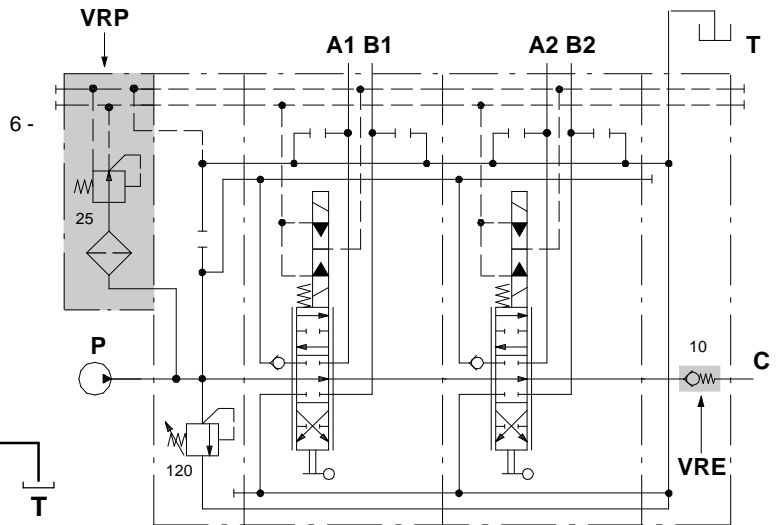
KE1S0	5KE1S00030	1-
KE2S0	5KE2S01230	2-
KE3S0	5KE3S01230	3-
KE4S0	5KE4S01230	4-
KE5S0	5KE5S01230	5-
KE6S0	5KE6S02230	6-
KE7S0	5KE7S01230	7-

8ED3 ON/OFF

24



VRP



VRP:

- ..... : 25
- ..... : 8 /
- ..... : 80

( BSP )

SD6/2/AC(YG3- 120)/18ED3L/18ED3L/RV- KE2R3- 24VDC

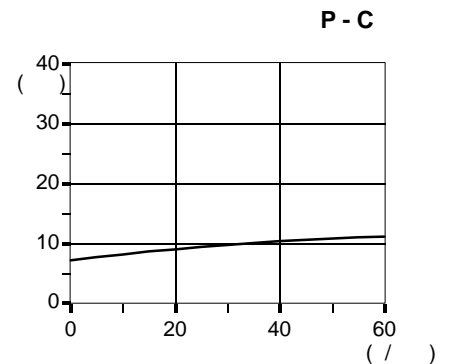
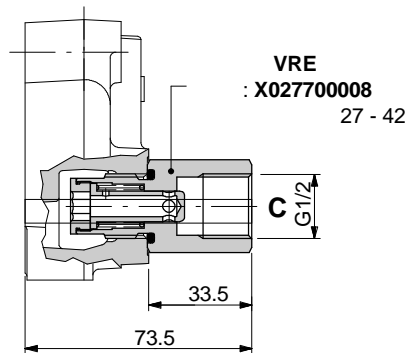
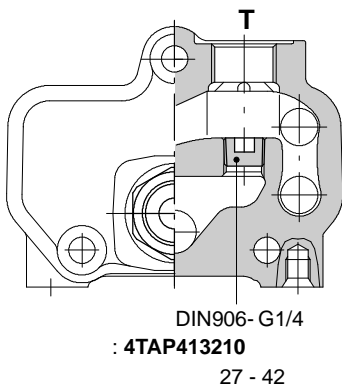
VRE

KE1R3	5KE1R31230	1-
KE2R3	5KE2R31230	2-
KE3R3	5KE3R31230	3-
KE4R3	5KE4R31230	4-
KE5R3	5KE5R31230	5-
KE6R3	5KE6R31230	6-

VRE

RV

612300122.

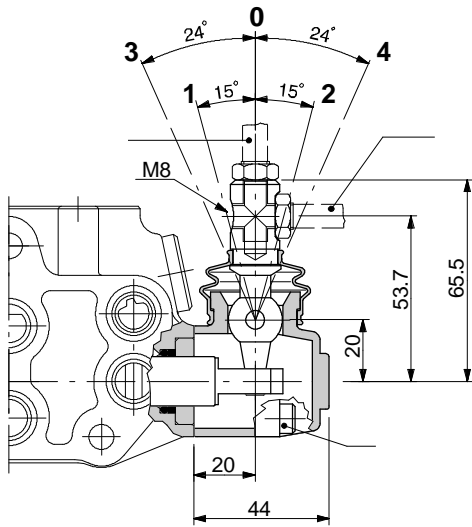
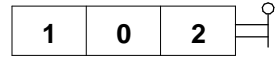


# SD6

“ ”

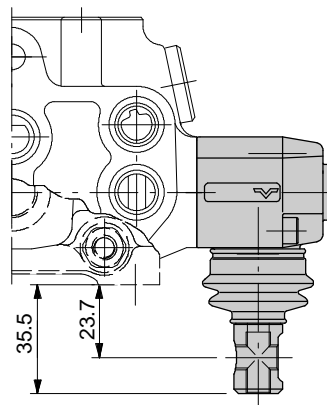
L

180° ( L180).



4 - 6.6

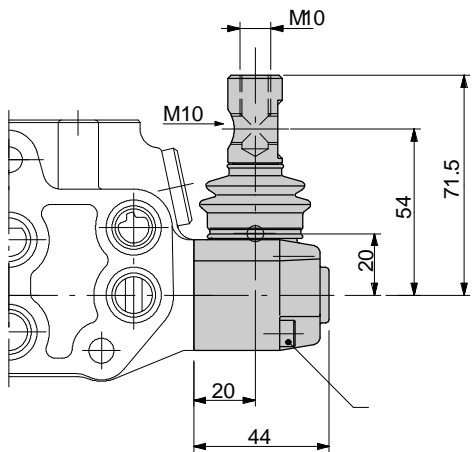
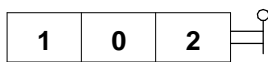
L180



LM10

10.

180° ( LM10180).

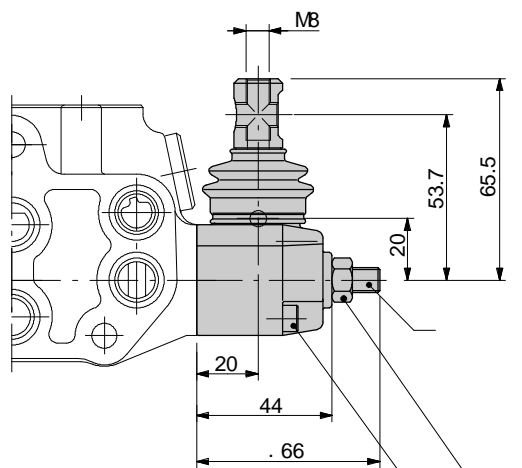
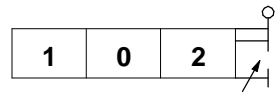


4 - 6.6

LF1

2 (P - A).

180° ( LF1180).

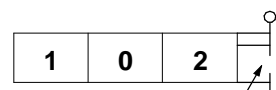
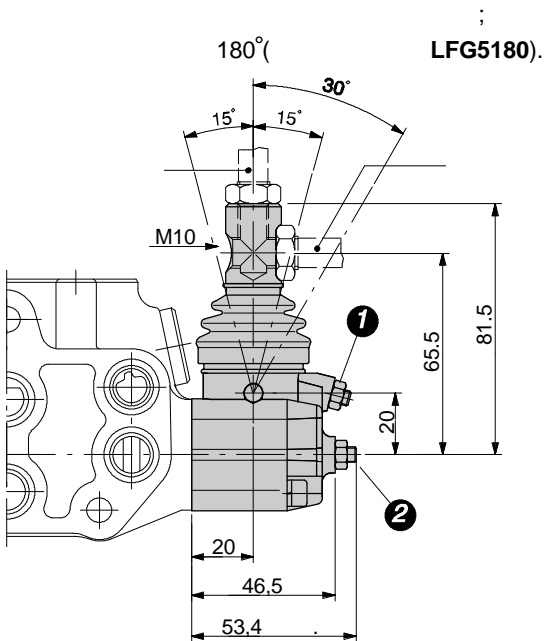


4 - 6.6

13 - 24

2.5

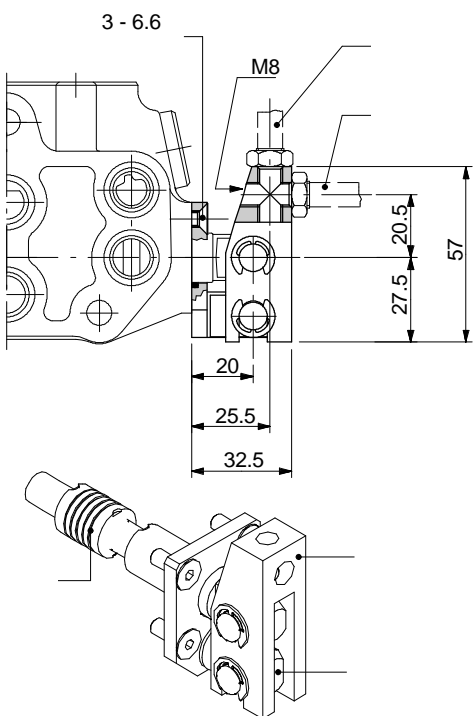
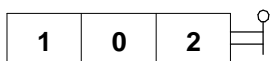
LFG5



①	:	2 ( - ):	2.5
		8 - 6.6	
②	:	1 ( - ):	2.5
		8 - 6.6	

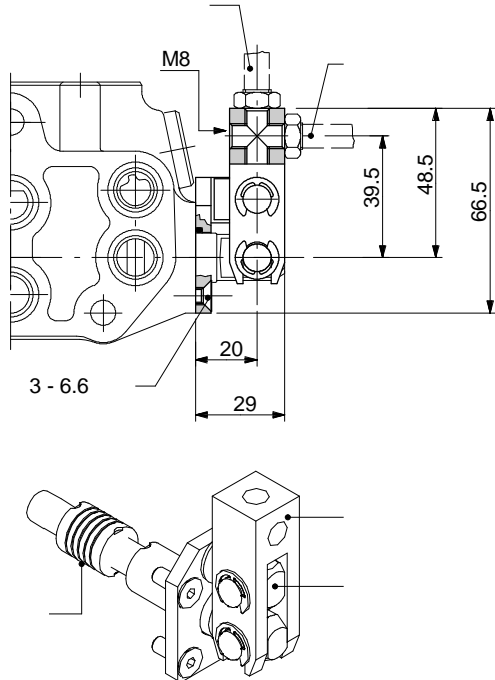
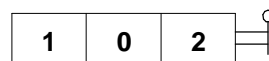
LB1

5B 5BY



LB3

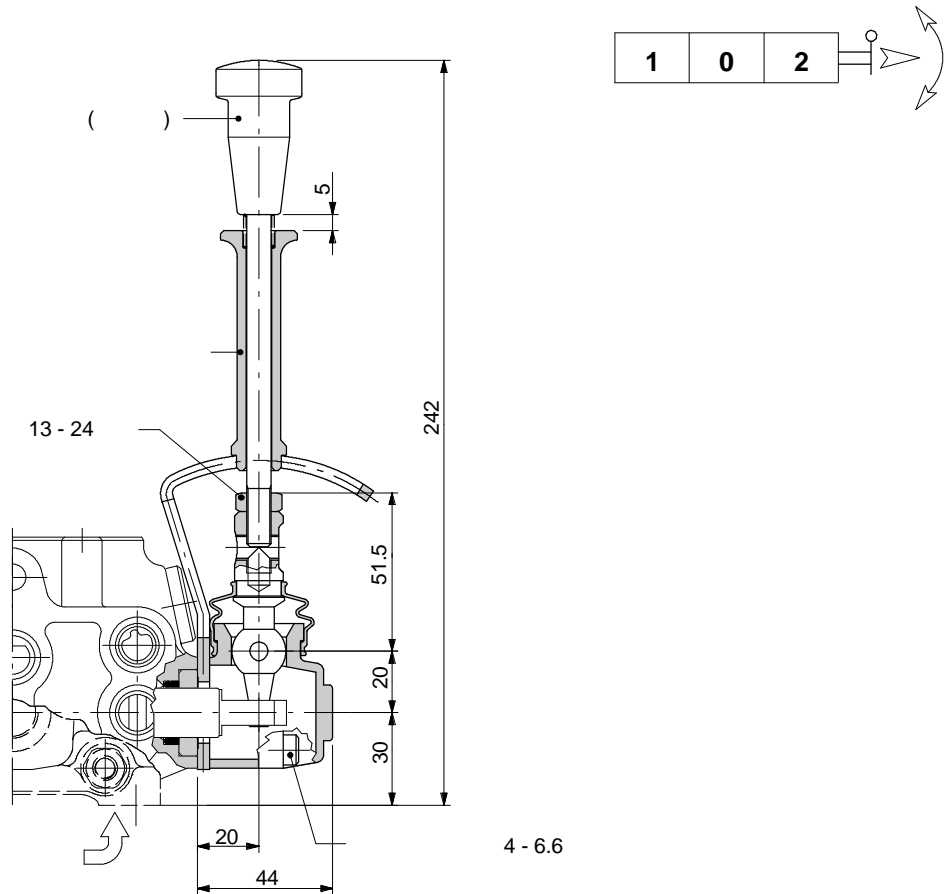
5B 5BY



# SD6

“ ”

## LEB

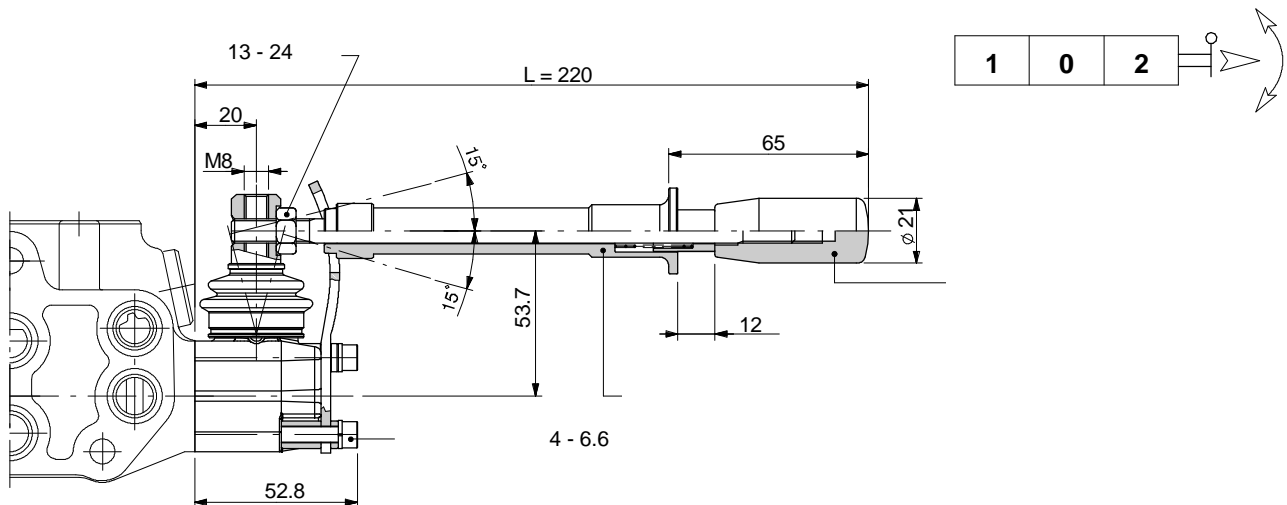


## LUP

LUP(R150)

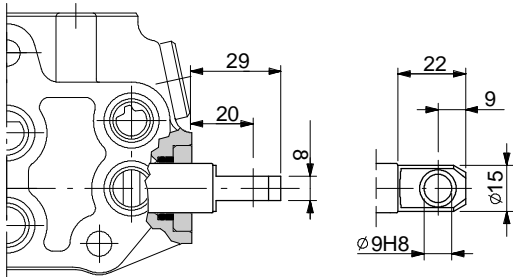
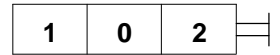
L=150 ;

5LEV805010.

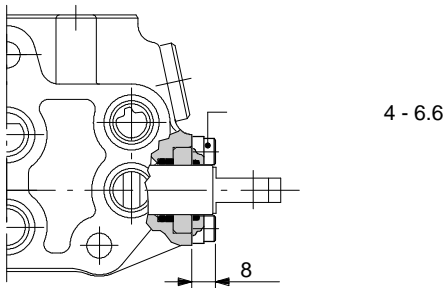
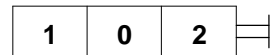




SL

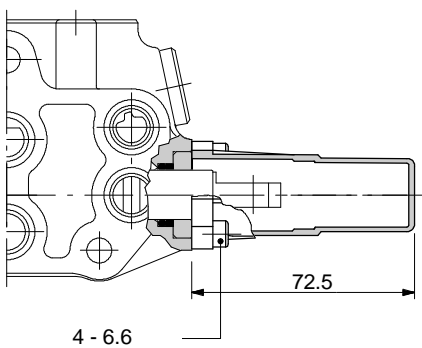
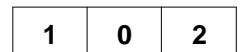


SLP



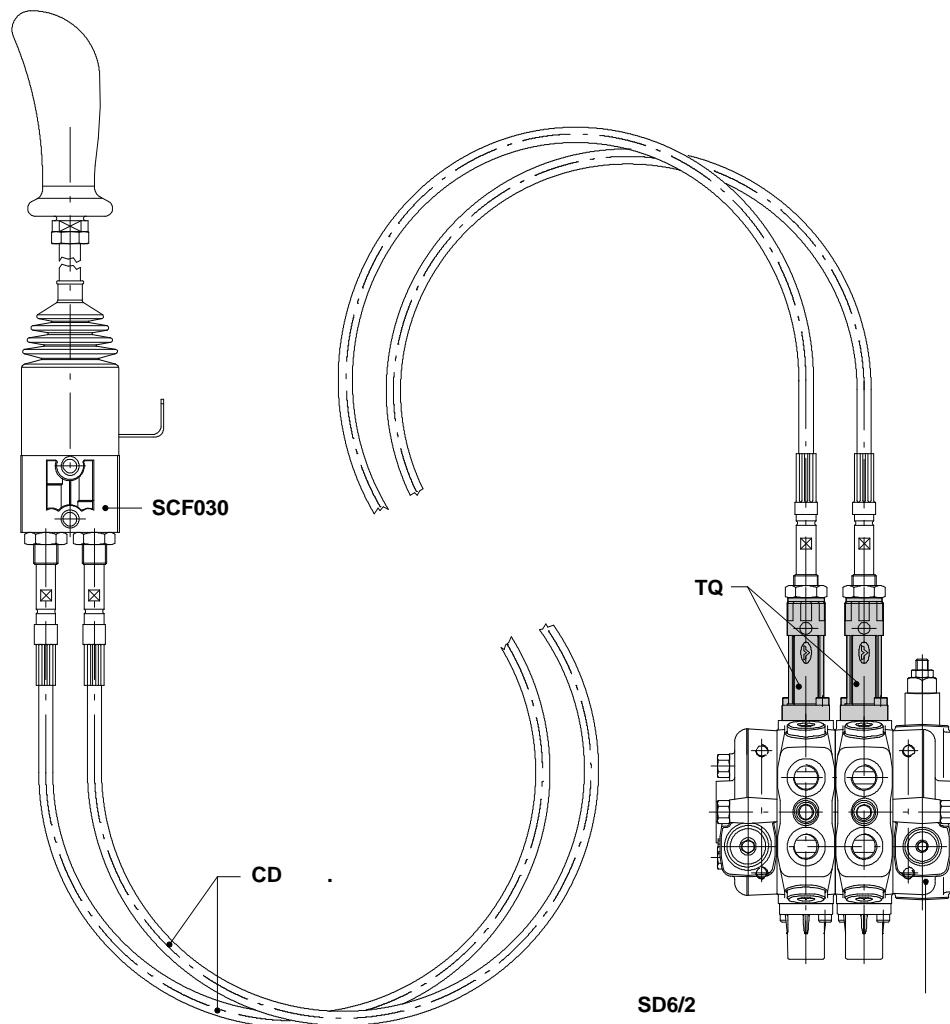
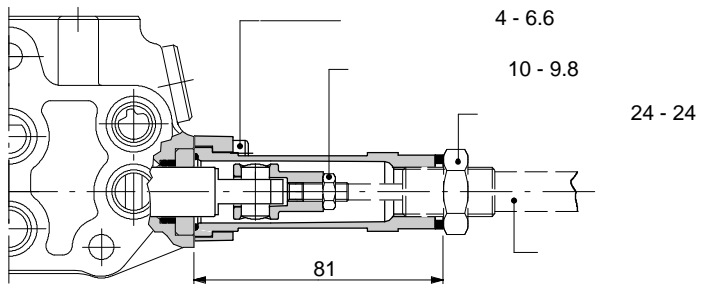
SLCZ

8P, 8EP3 8ED3.

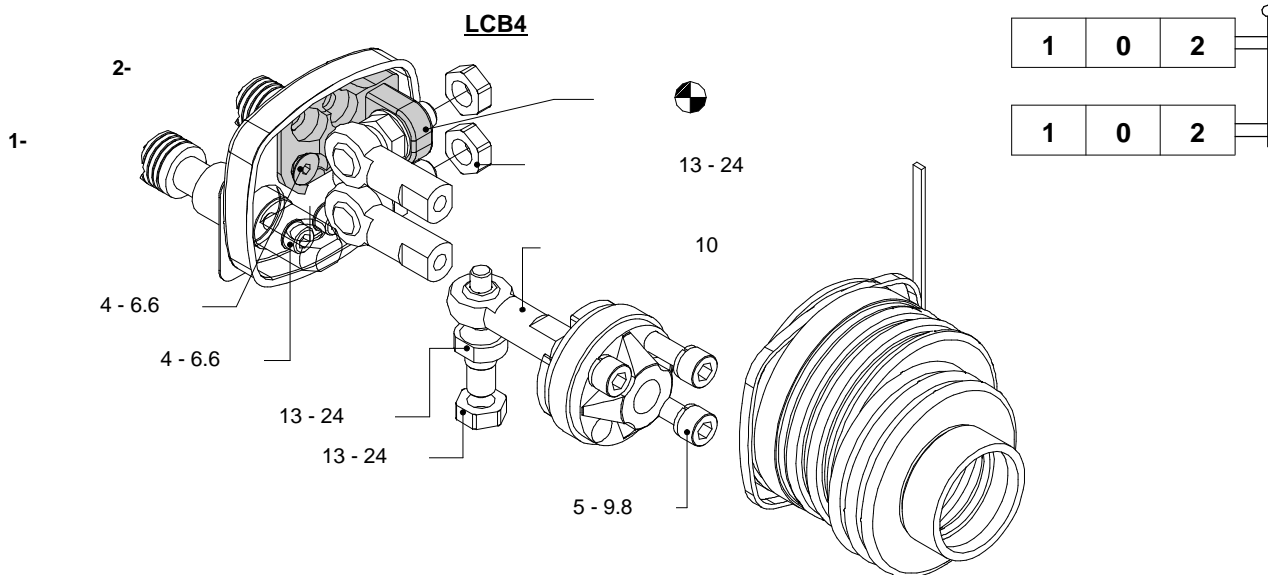


## TQ

1	0	2
---	---	---

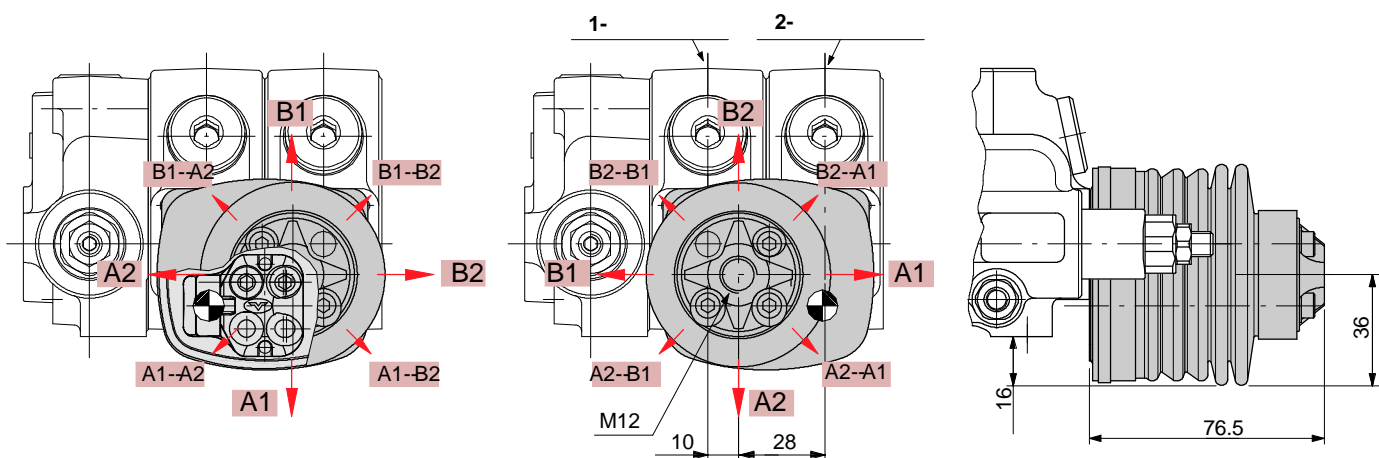


LCB



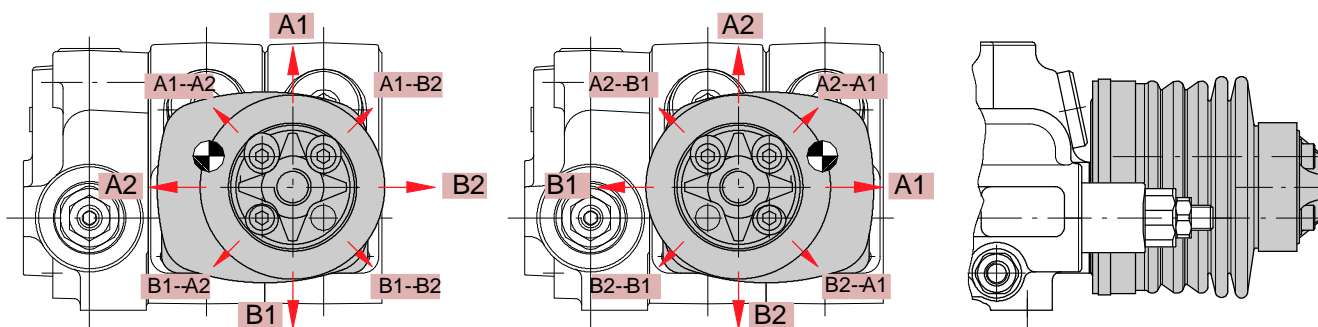
LCB1

LCB2



LCB3

LCB4



# SD6

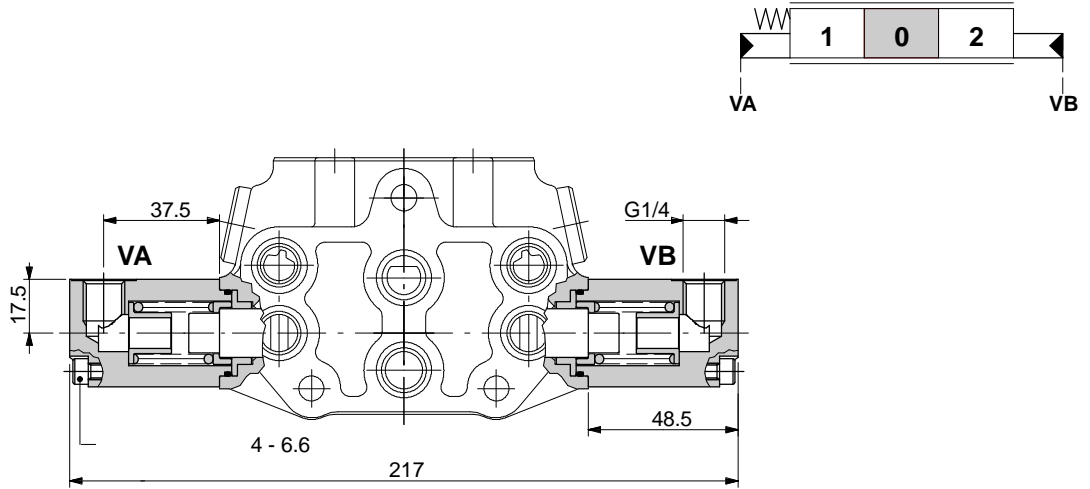
## 8IM

: 5IDR206010

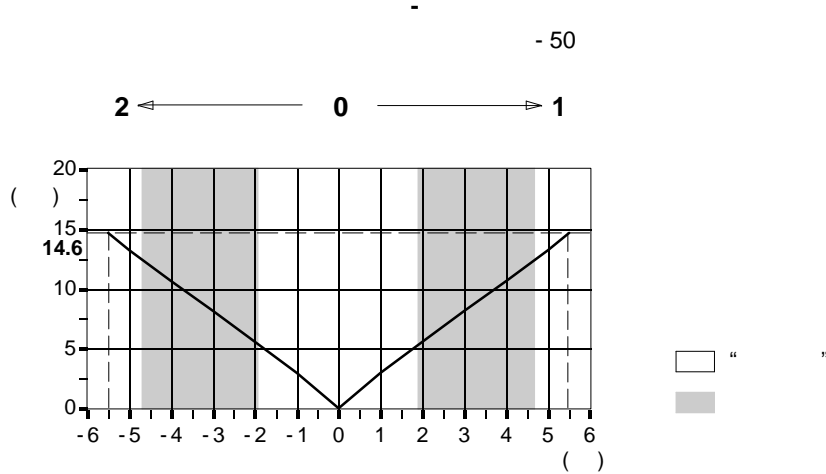
8IMF3 SD6

5IDR206012.

5EL106300A.

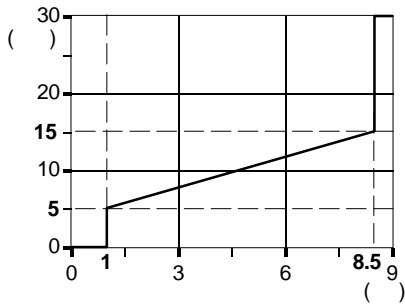


- 1IM 3CU2210420 , 3-
- 2IM 3CU2225420 , 3-

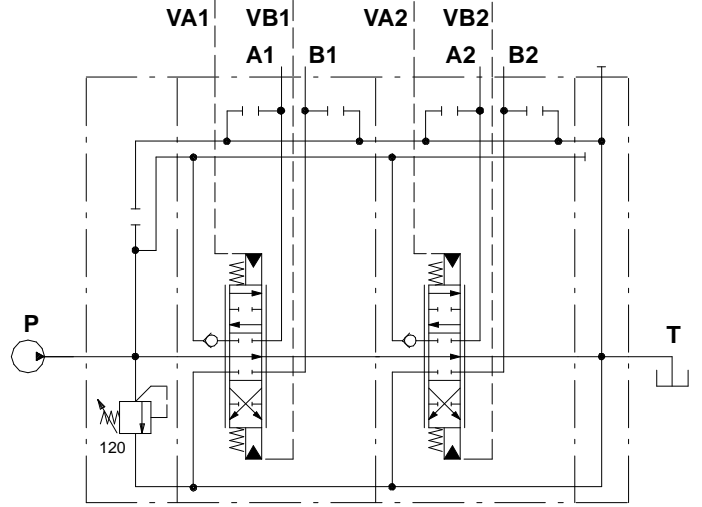
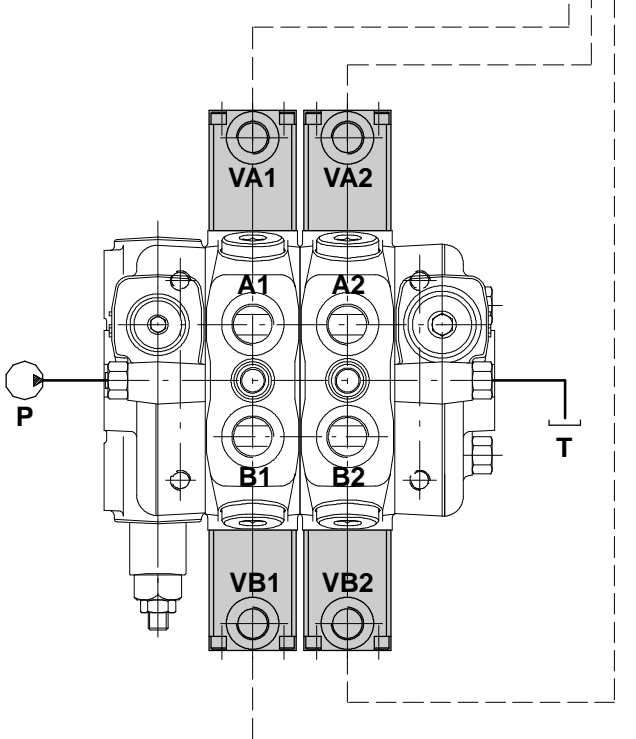
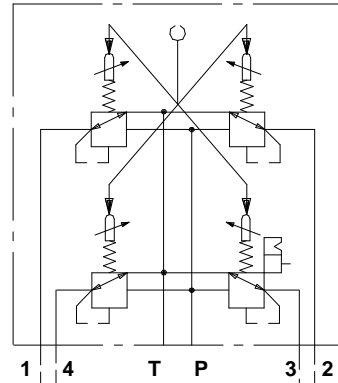
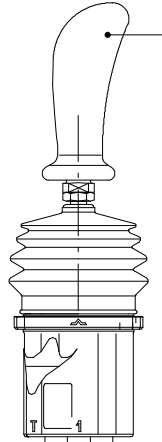
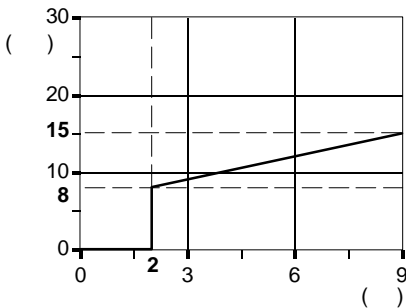


8IM

8IM  
075



8IM  
150



SD6/2/AC(YG3- 120)/1IM8IM/1IM8IM/RC+  
SV01- B/01W- 075MA- 075MA- 075MA- 075MA

# SD6

## 8ESN

EL SD6 / P - 1 8ESN LES P1(G3 - 125) - 24VDC

2.

3.

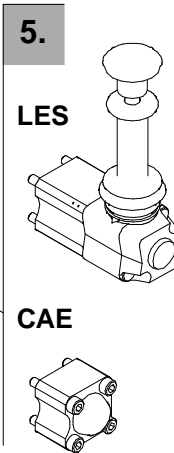
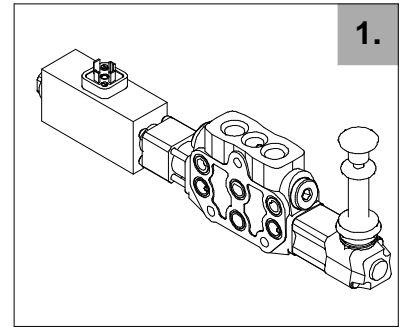
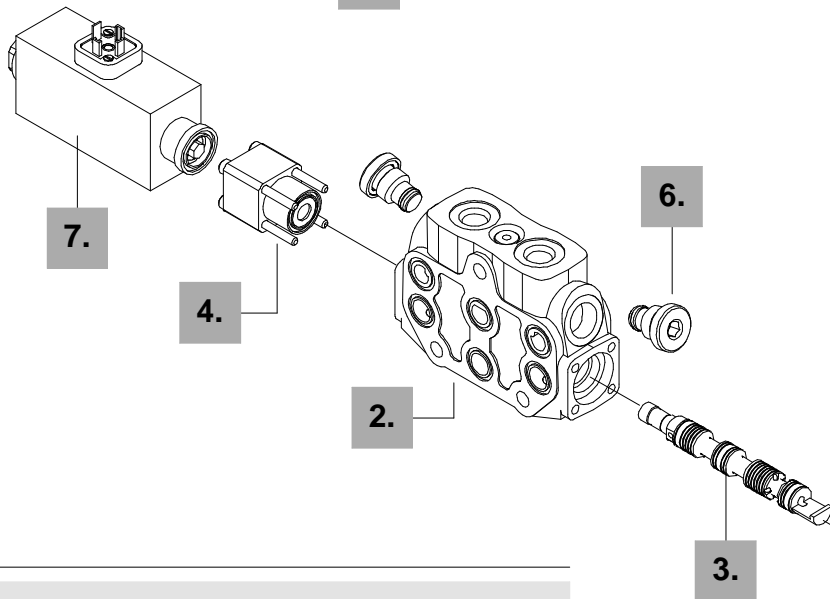
4.

5.

6.

7.

1.



1.

P-18ESNLES-24VDC 612101019

2.

P/IM-ES 5EL106300A

3.

1(ESN) 3CU2210050

2(ESN) 3CU2225050

4.

8ESN 5V08012

5.

T  
LES 5LEV106410

CAE 5COP206100

6.

.21

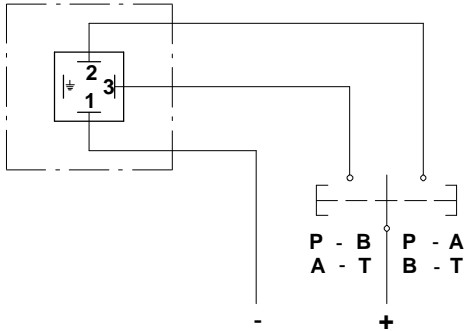
7.

10.5VDC XSOL314310  
12VDC XSOL314312  
24VDC XSOL314024  
192VDC XSOL314192

10.5 DC  
12 DC  
24 DC  
192 DC

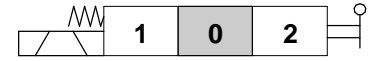
( 220 AC)

8ESN

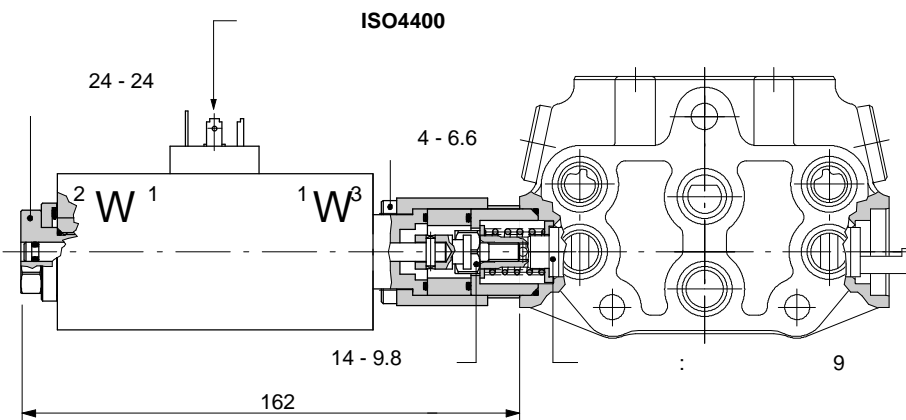
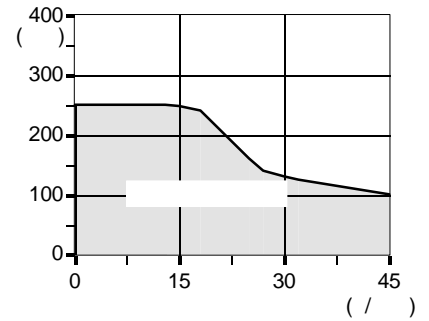


M :  
 M ..... : 250  
 M ..... : 45 /  
 ( ) -  
 (Dp = 100 / T = 40°C) : 10 3/  
 :  
 : ±10%  
 ..... : 65  
 ..... : 100%

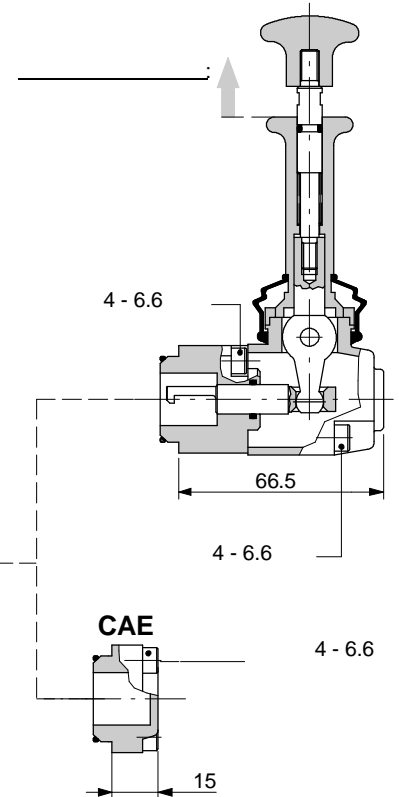
8ESNLES



8ESNCAE



LES



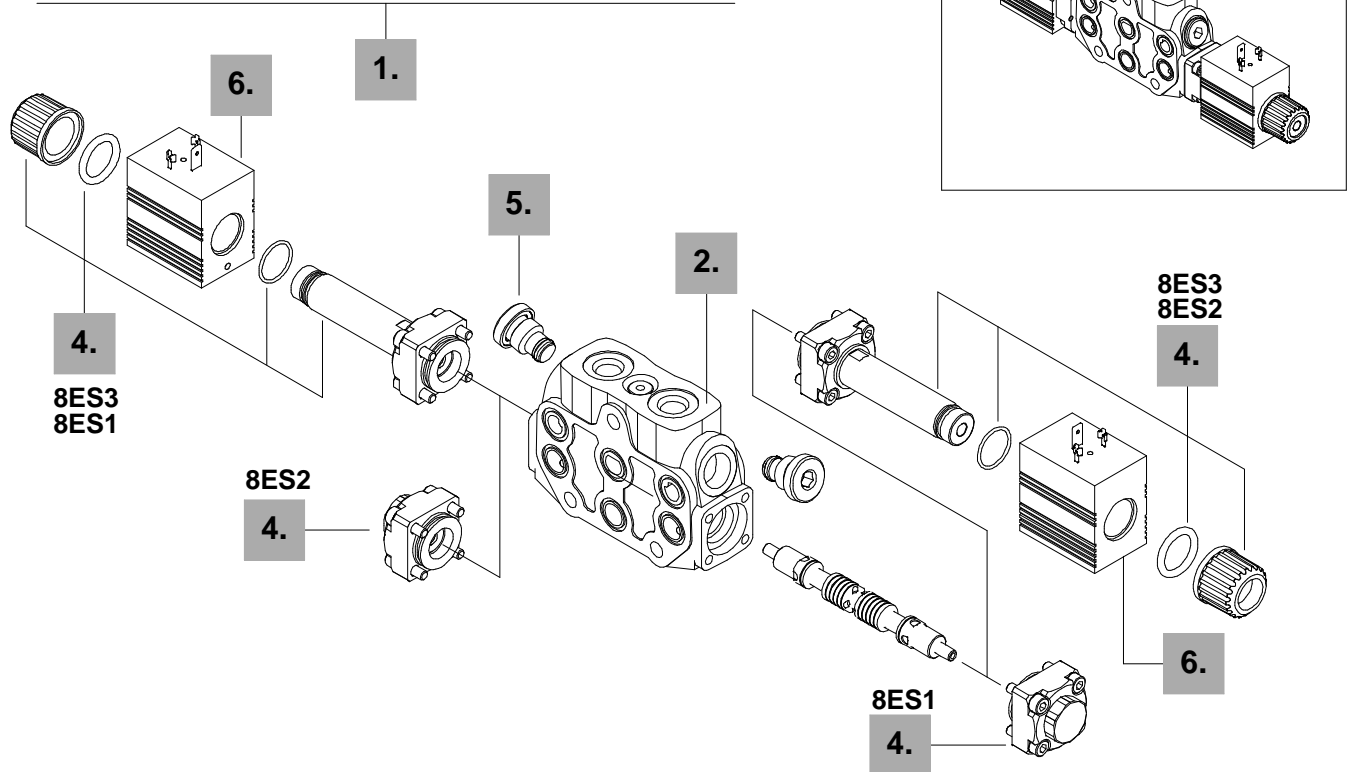
# SD6

## 8ES

( ) ;  
:

EL SD6 / P - 1 8ES3 P1(G3 - 100) - 12VDC

2. 3. 4. 5. 6.



**1.**  
P-18ES3-12VDC 61210101C  
ON/OFF

**2.**  
P/IM-ES 5EL106300A

**3.**  
1(ES) 3CU2210015  
2(ES) 3CU2225015 , 3-

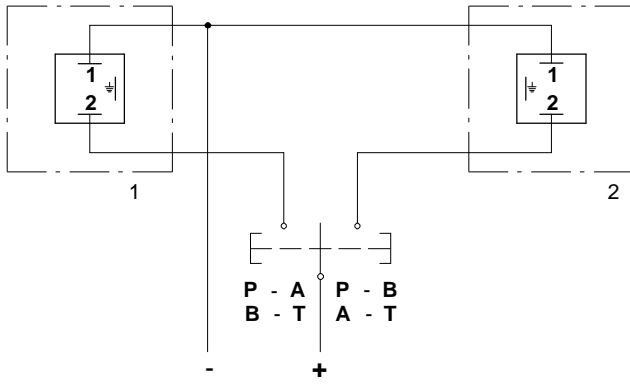
**4.**  
8ES1 5V08026 P - A,  
8ES2 5V08026 P - B,  
8ES3 5V08027

**5.**  
.21

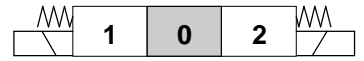
**6.**  
10.5VDC 4SOL512011 10.5 DC  
12VDC 4SOL512012 12 DC  
24VDC 4SOL512024 24 DC



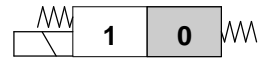
8ES



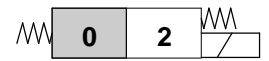
8ES3



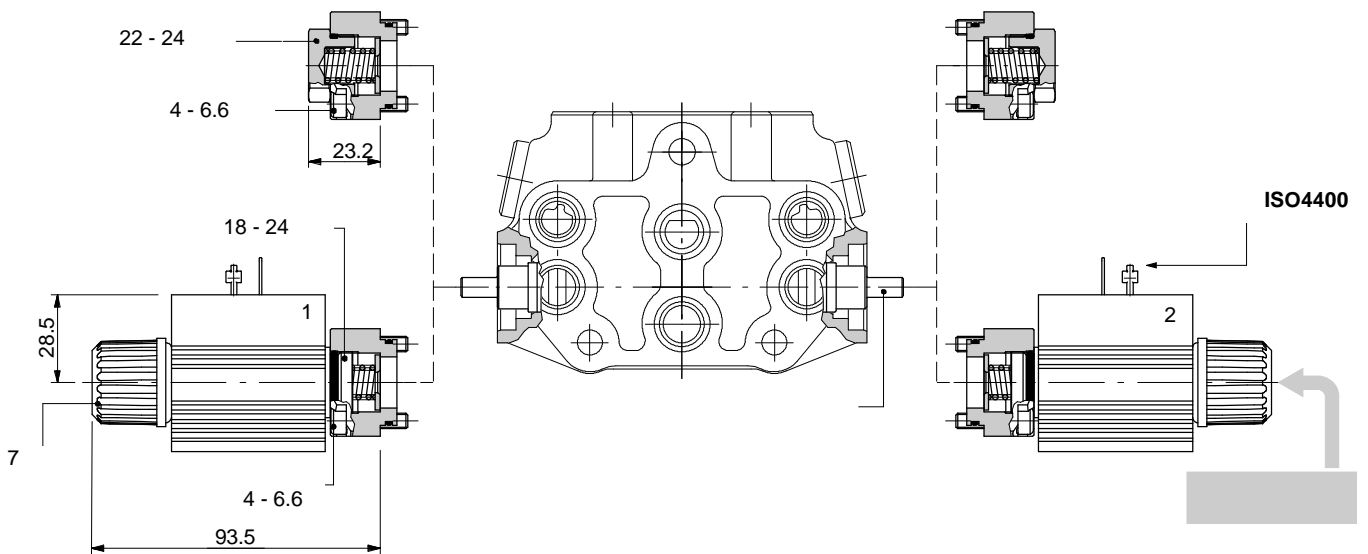
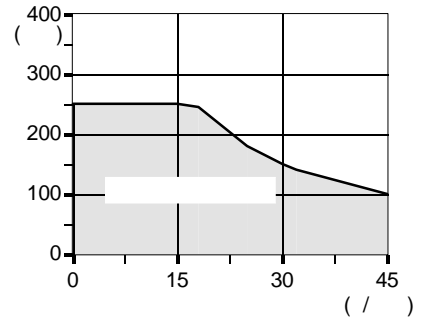
8ES1



8ES2

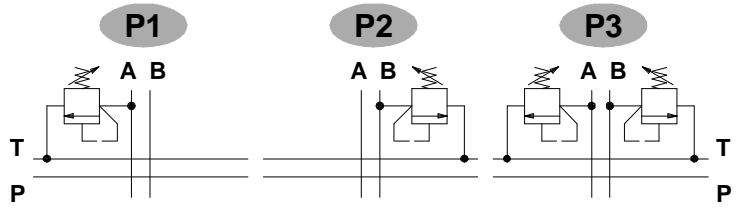
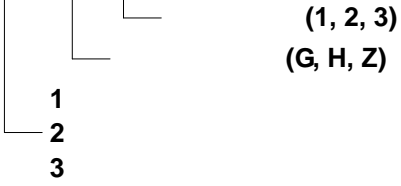


M : ..... : 250  
M : ..... : 45 /  
(Dp = 100 / T = 40°C) : 10 3/  
: ..... : ±10%  
: ..... : 36  
: ..... : 100%

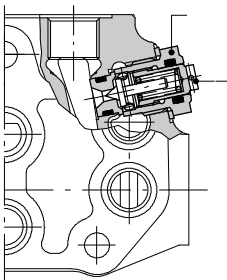


# SD6

P 1 ( G 3 - 100 )



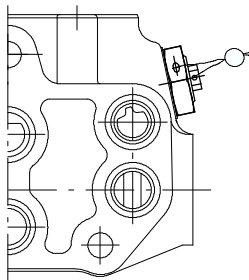
G:



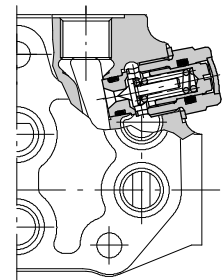
22 - 42

1.5

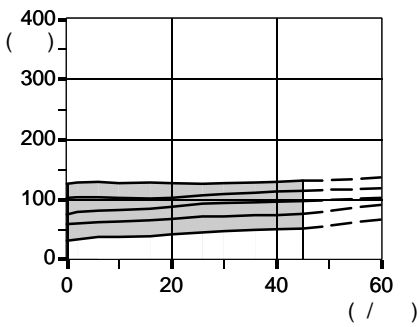
H:



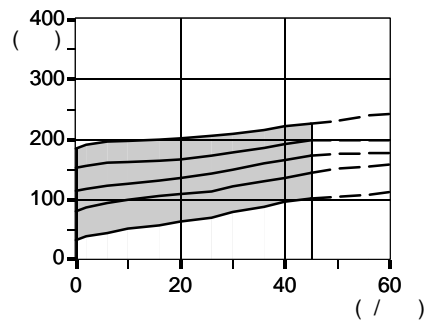
Z:



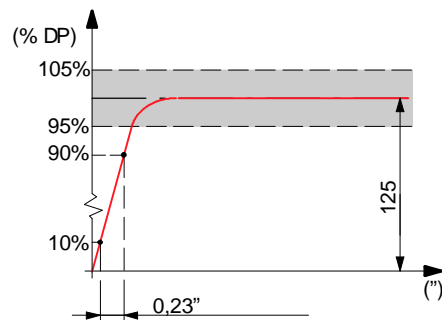
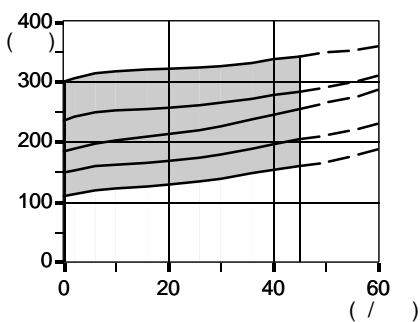
2 ( )  
: 63



3 ( )  
: 100



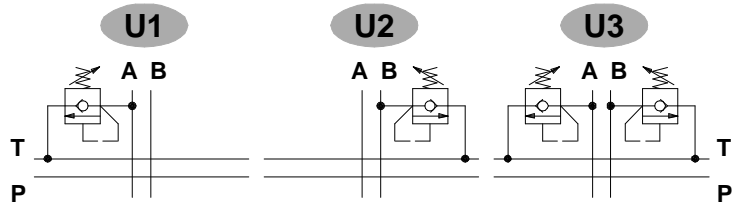
4 ( )  
: 200



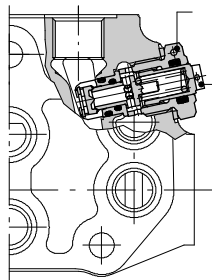
U 1 ( G 3 - 100 )

1  
2  
3

(1, 2, 3)  
(G, H)



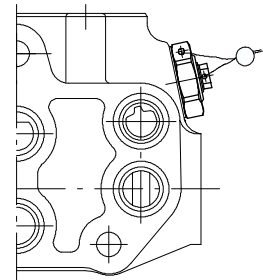
G:



22 - 42

1.5

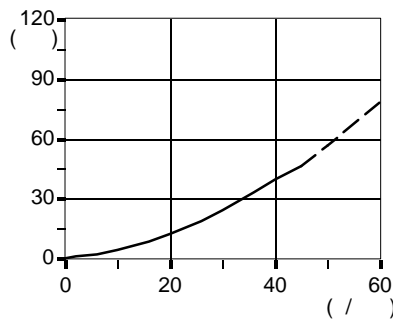
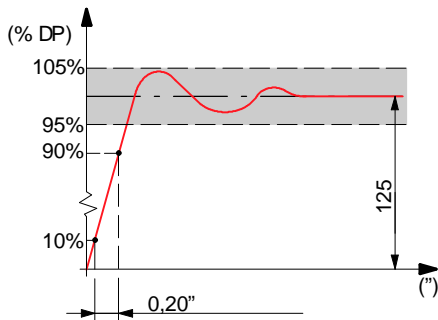
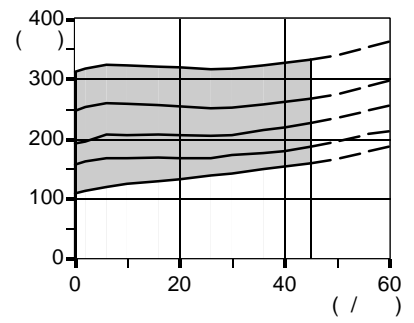
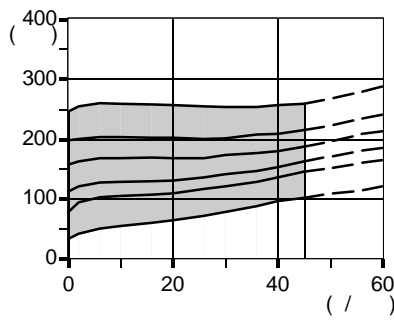
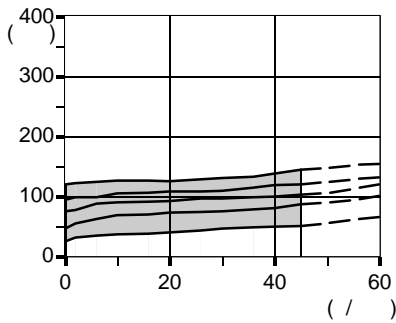
H:



2 ( )  
: 63

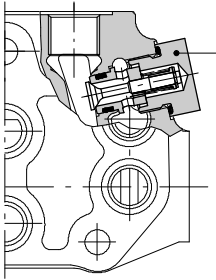
3 ( )  
: 100

4 ( )  
: 200

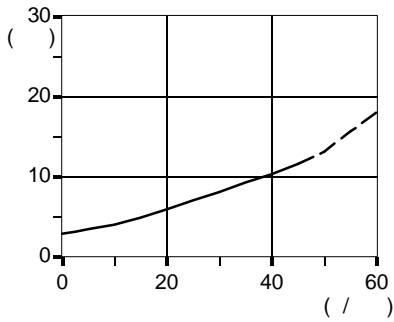
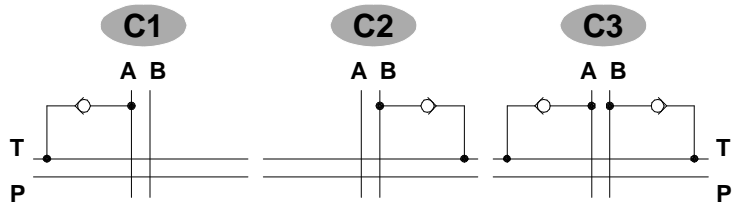


C 1

- 1
- 2
- 3

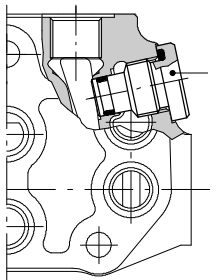


24 - 42

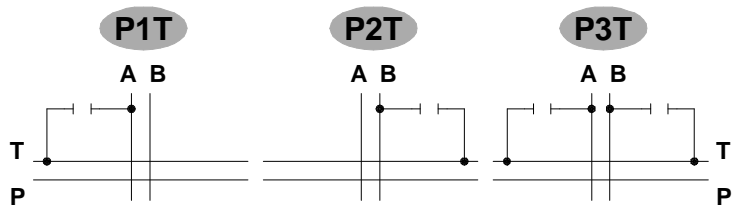


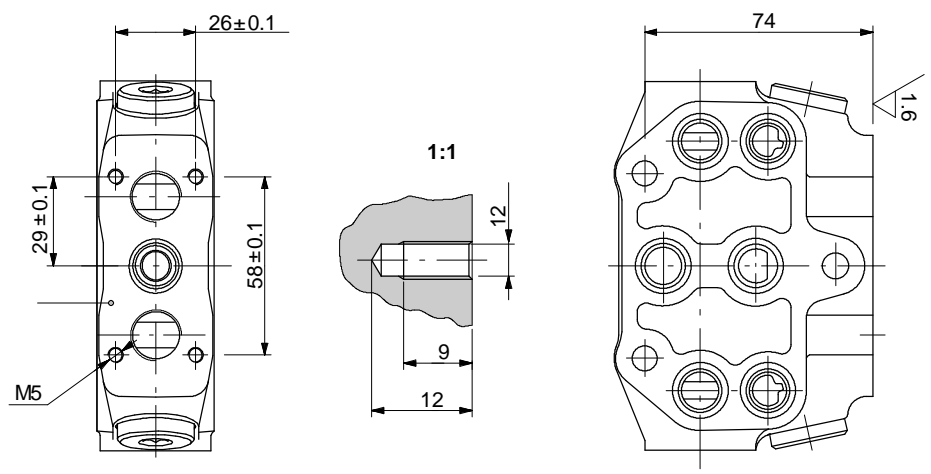
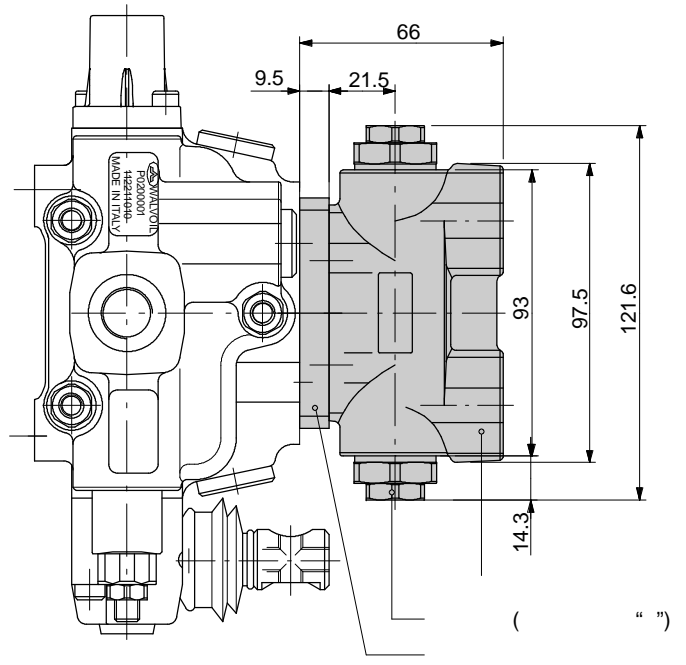
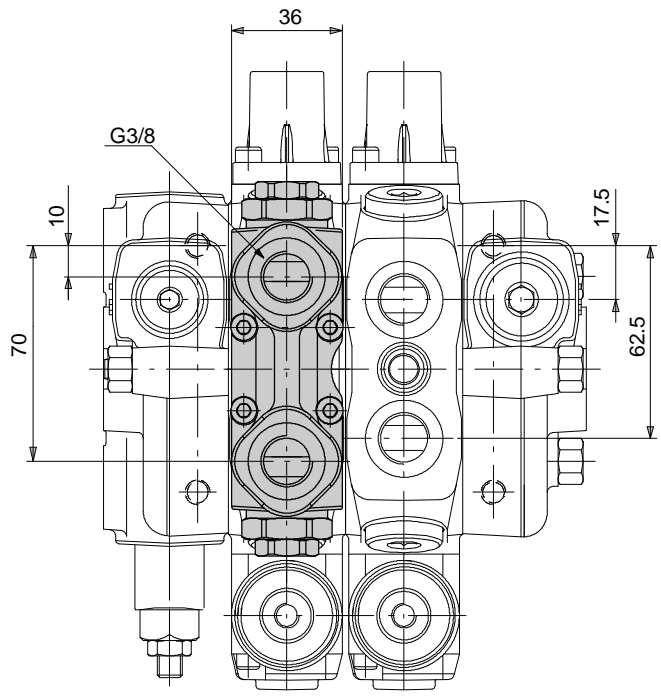
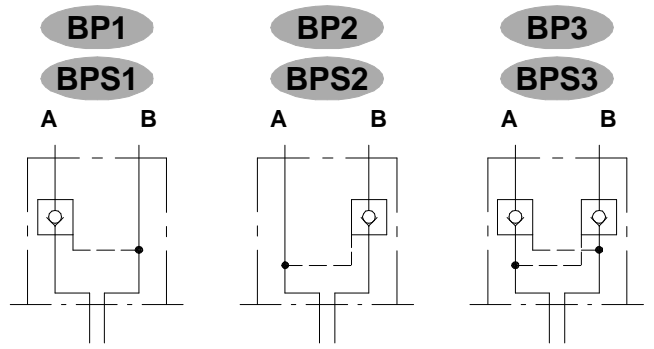
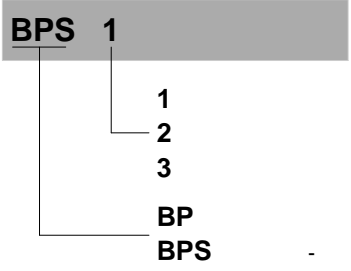
P 1 T

- 1
- 2
- 3

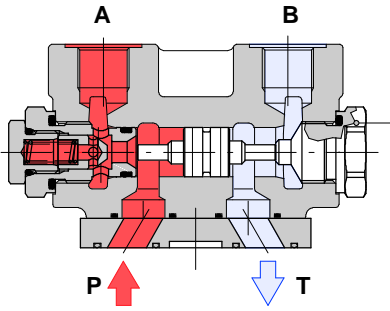


8 - 42



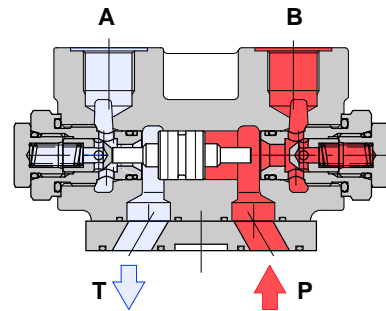
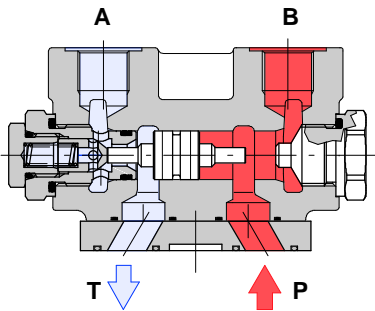
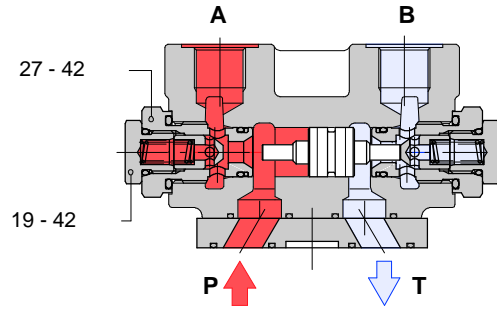


**BP1**

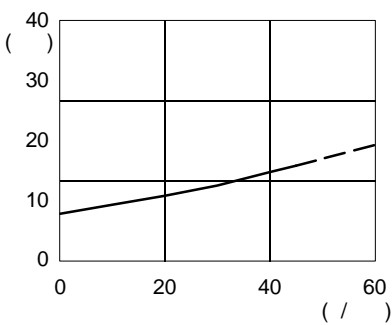


27 - 42

**BP3**

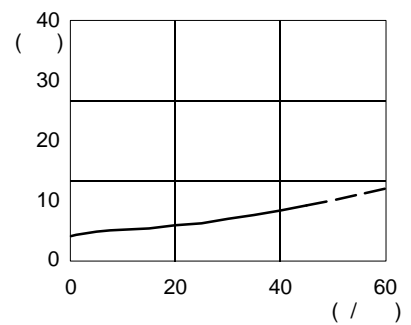


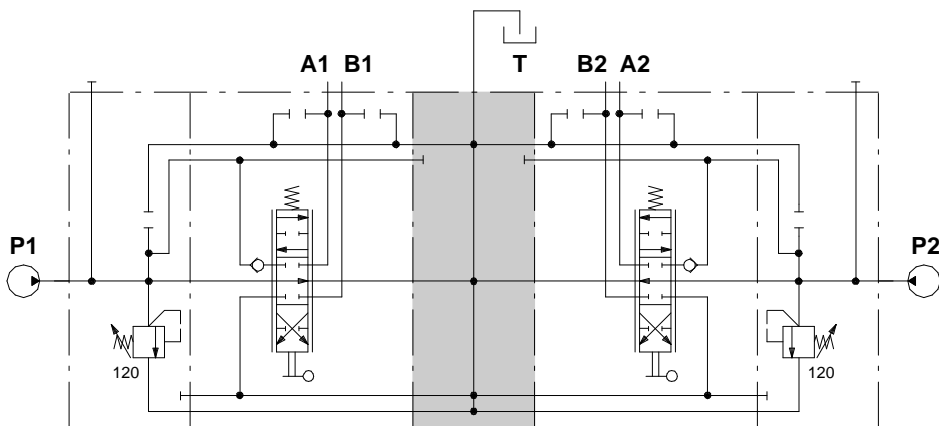
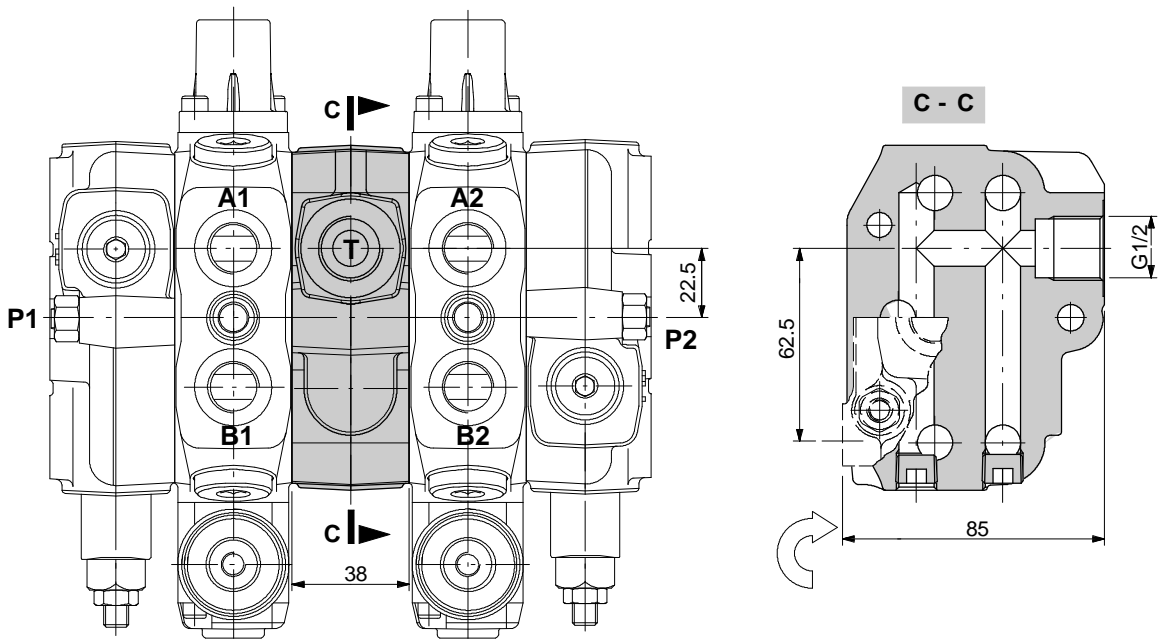
**BP**



<b>T</b>	-	
<b>BP</b>	/	1 : 5.3
<b>BPS</b>	1 : 16	1 : 3.2

**BPS**

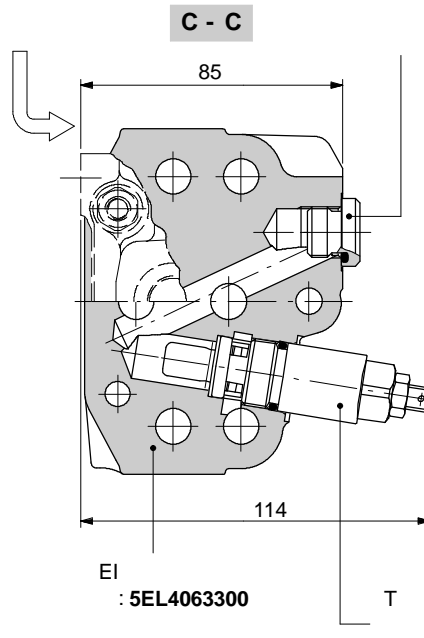
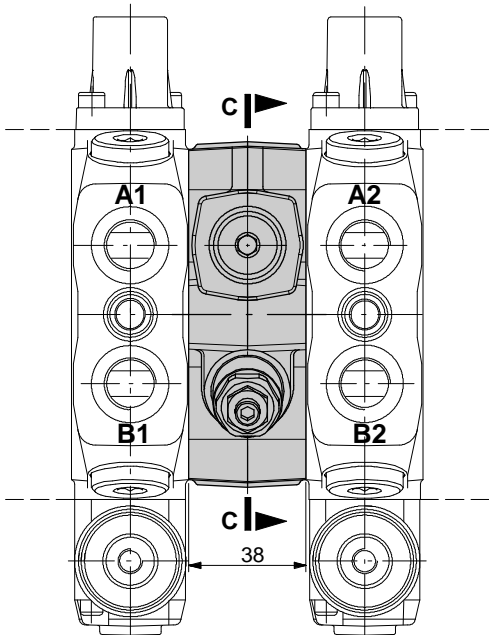




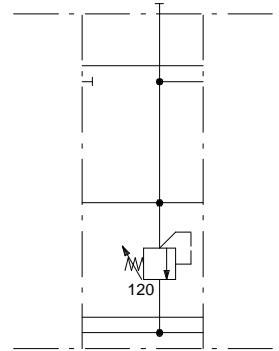
SD6/2/AC(YG3-120)/18L/CS1/18L/BC(YG3-120)

20

EI1

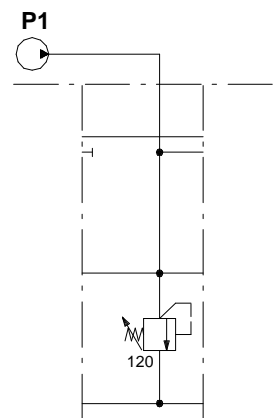
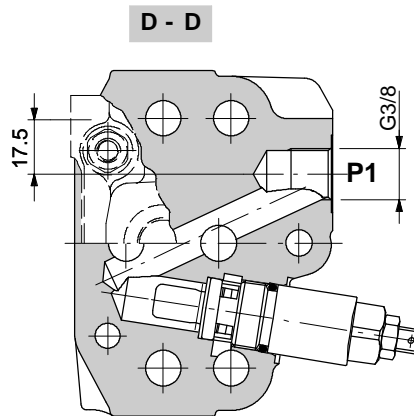
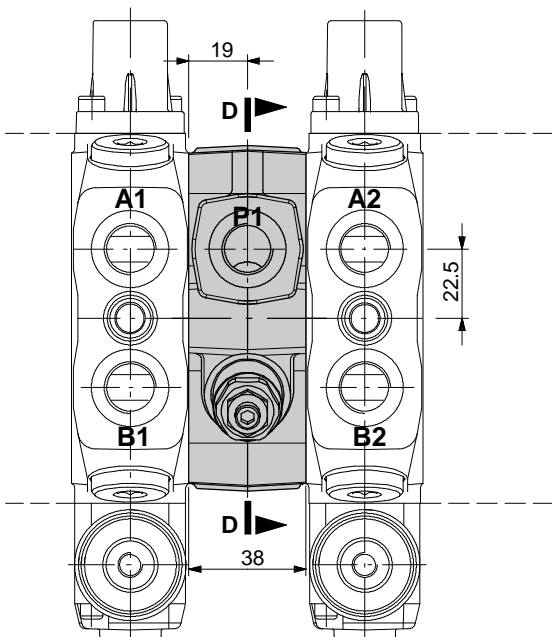


: 3XTAP722160



SD6/2/AC(YG3- 175)/18L/EI1(YG3- 120)/18L/RC

EI2

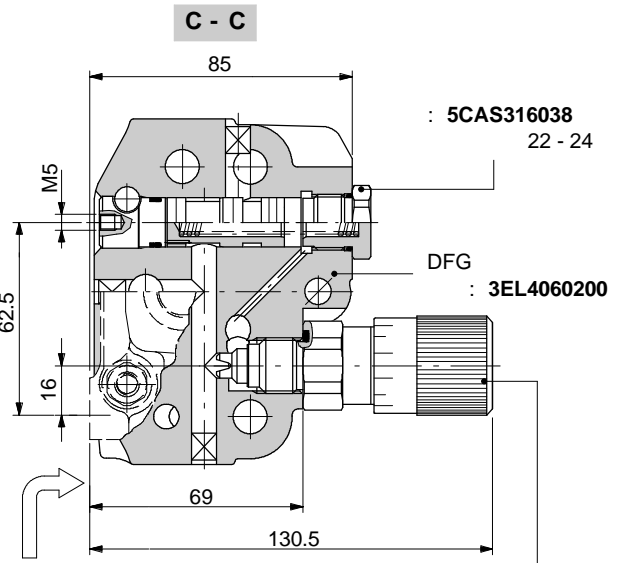
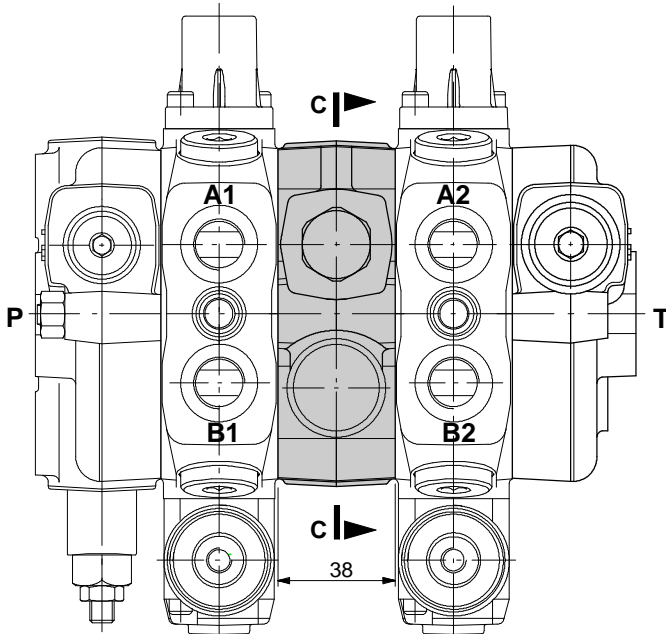


SD6/2/AC(YG3- 175)/18L/EI2(YG3- 120)/18L/RC

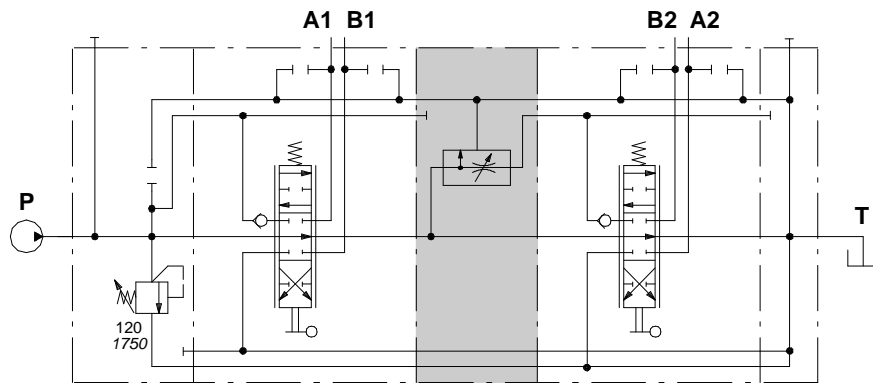


DFG

0 40 / ,

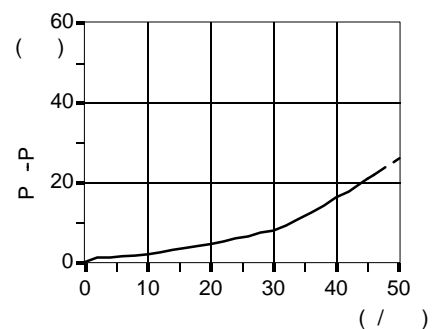
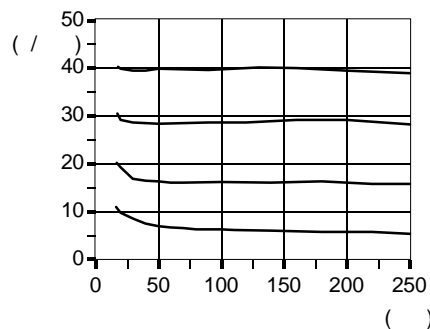
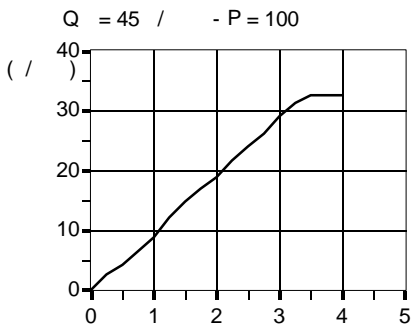


: XCAR706200  
27 - 24



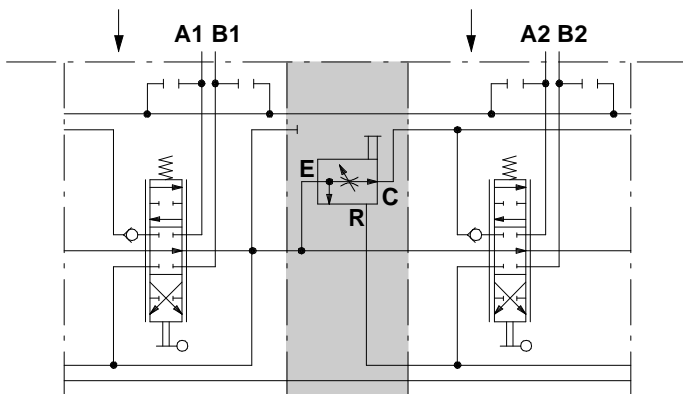
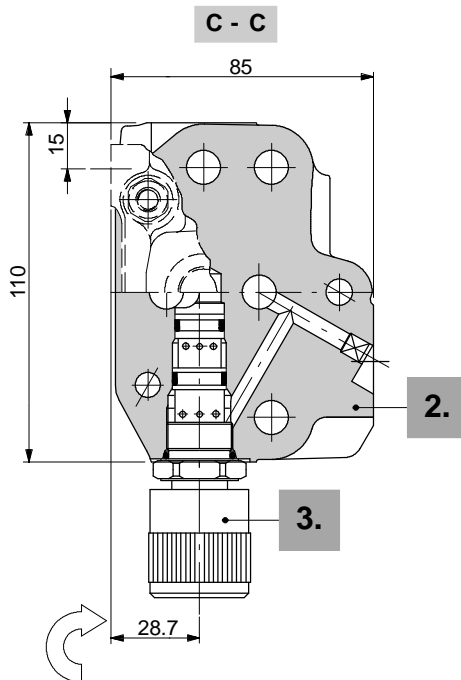
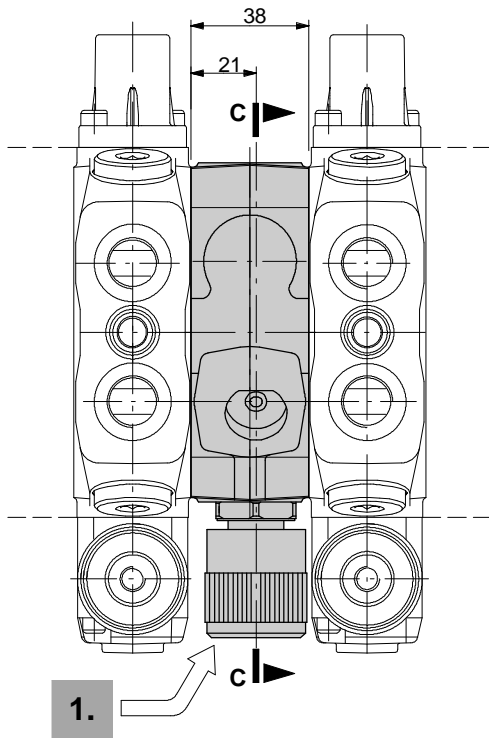
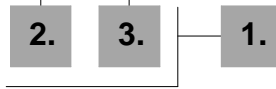
SD6/2/AC(YG3-120)/18L/DFG/18L/RC

Q = 45 /



3-  
- 45 / , - 30 /

:EL SD6 / EVP9 1



SD6/4/AC(JG3- 120)/.../S- 18L/EVP91/18L/.../RC

1.

EVP91 612423503  
EVP92 612423501  
EVP93 612423502  
12 DC

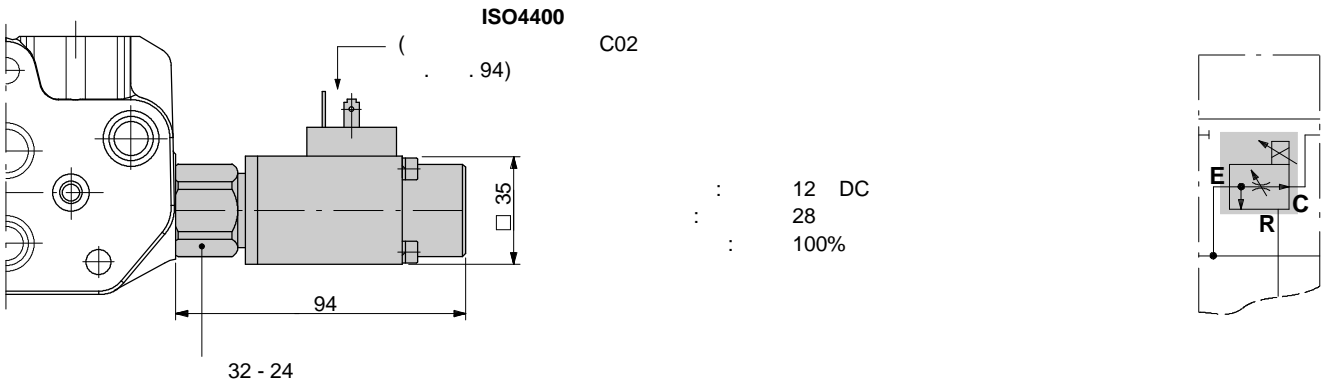
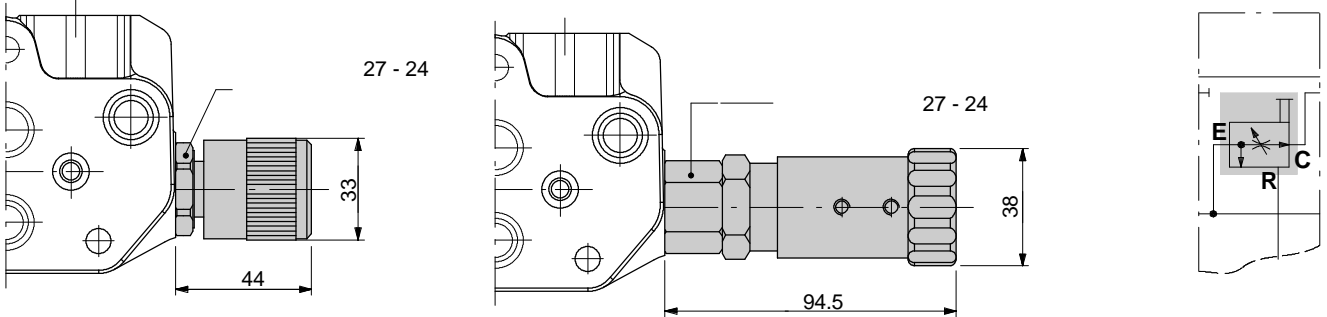
2.

EVP9 5EL4060302

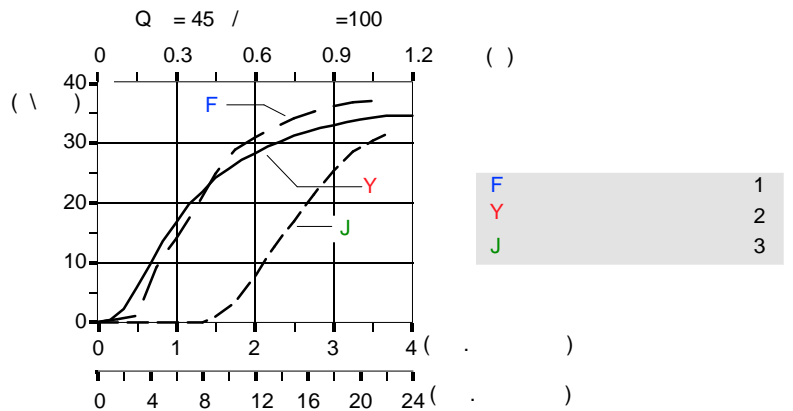
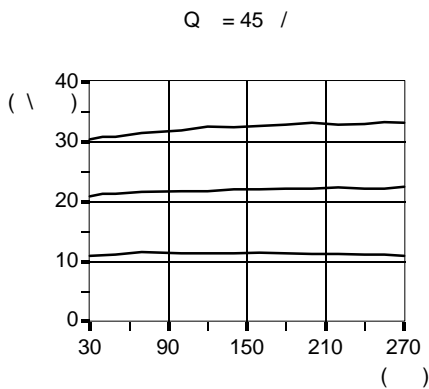
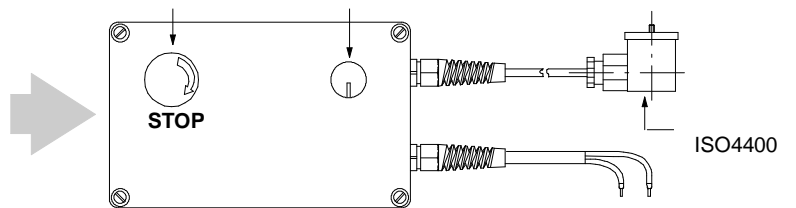
3.

1 2S0PP10002000  
2 2S1636020206  
3 2S0PP10002002 12 DC

EVP9



UPA UPA12/100/SC01B22



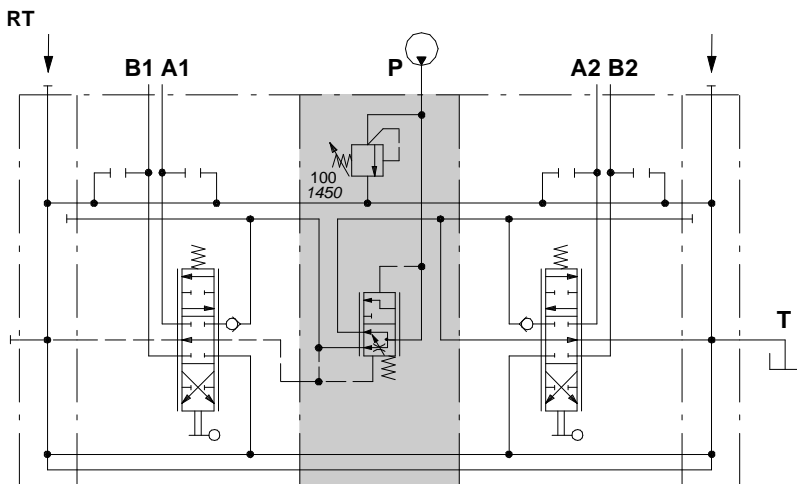
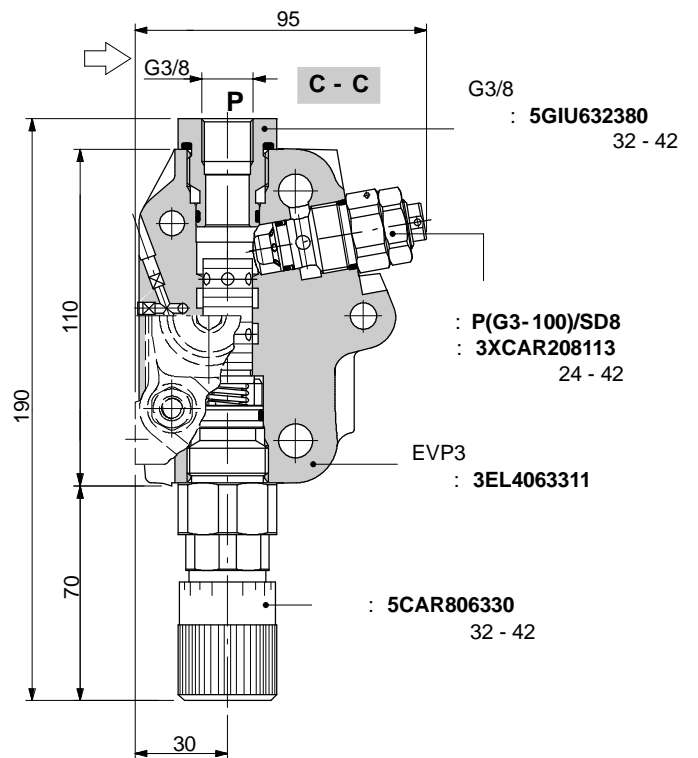
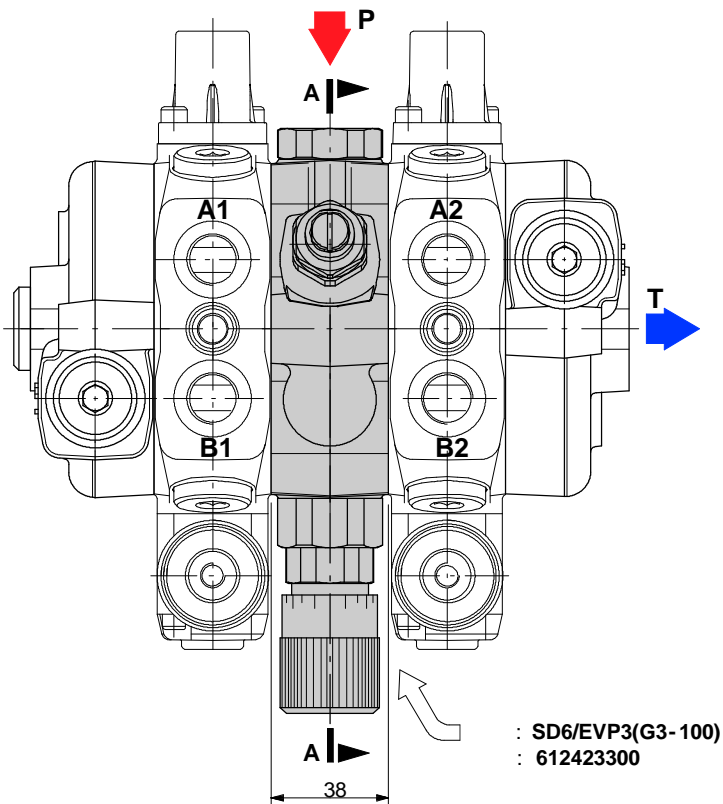
EVP3,

EVP3

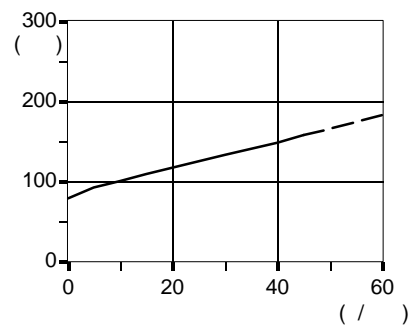
( RT 612300112),

- 60 /

- 40 /



: SD6/2/RT/18L/EVP3(G3-100)/18L/RC



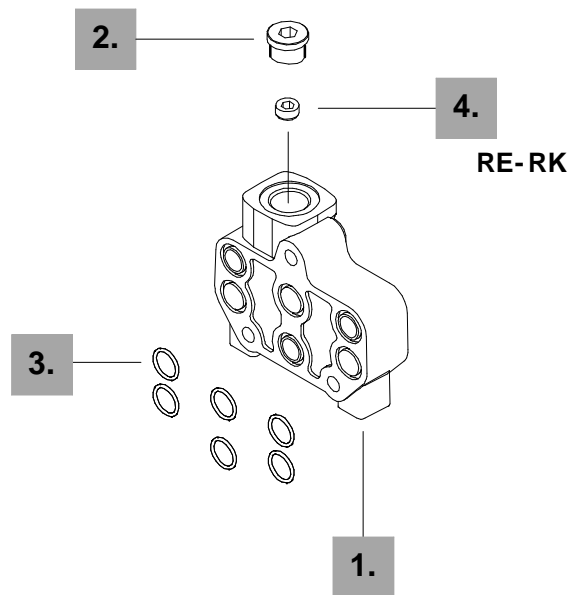
FSS D6 / RC



RC:  
RD:  
RE:  
RK:

62

"carry-over"



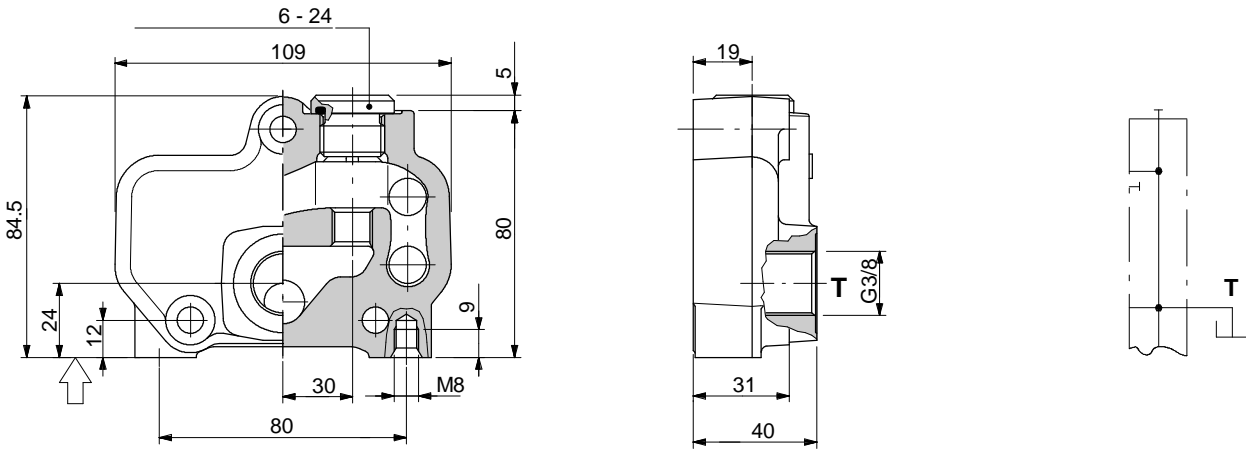
Circuit options

N		-	
1.	3FIA206300	1	
2.	3XTAP727180	1	G 1/2
3.	4GUA114018	6	14x1,78 NBR 70 SH

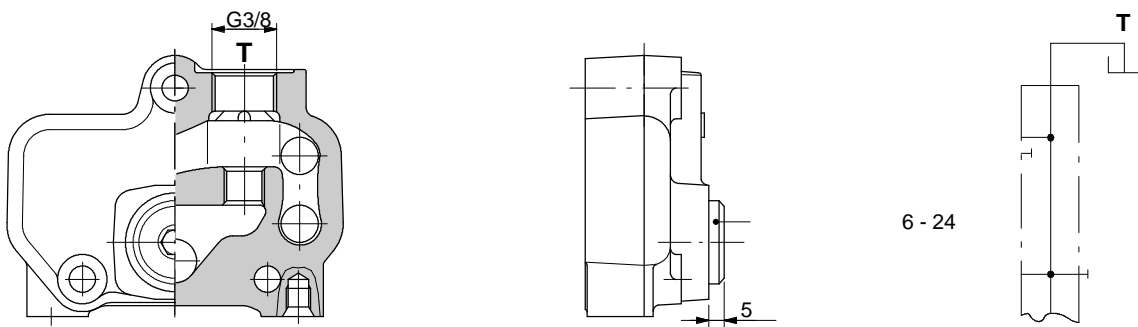
N		-	
4.	4TAP413210	1	G1/4 (RE) (RK) "carry-over"

# SD6

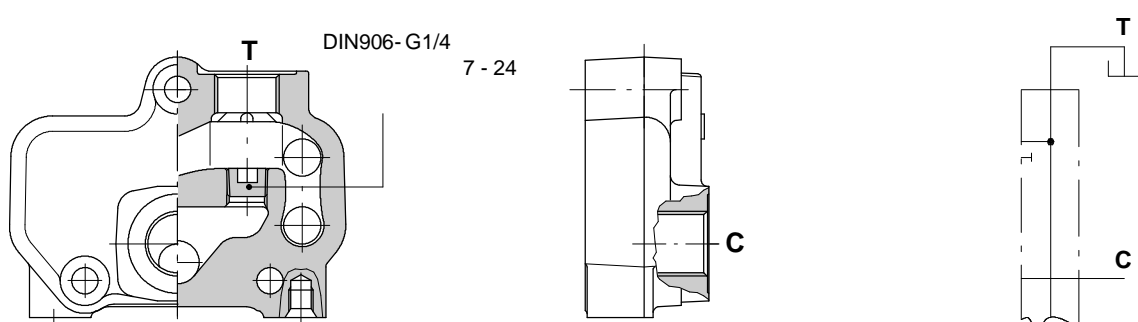
## RC



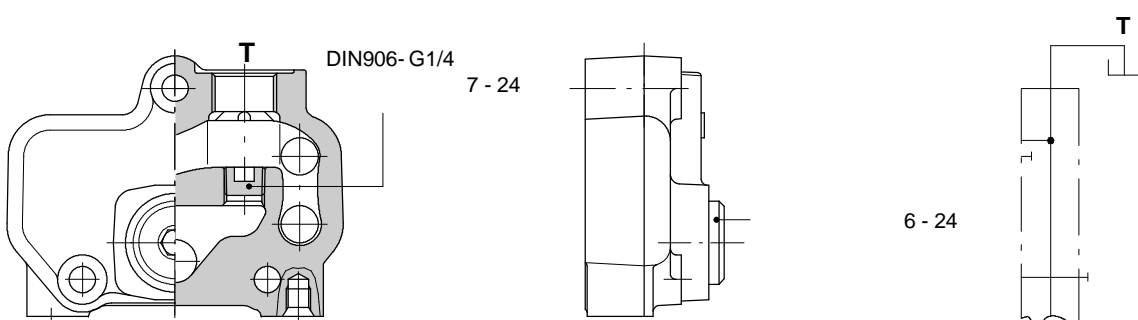
## RD



## RE

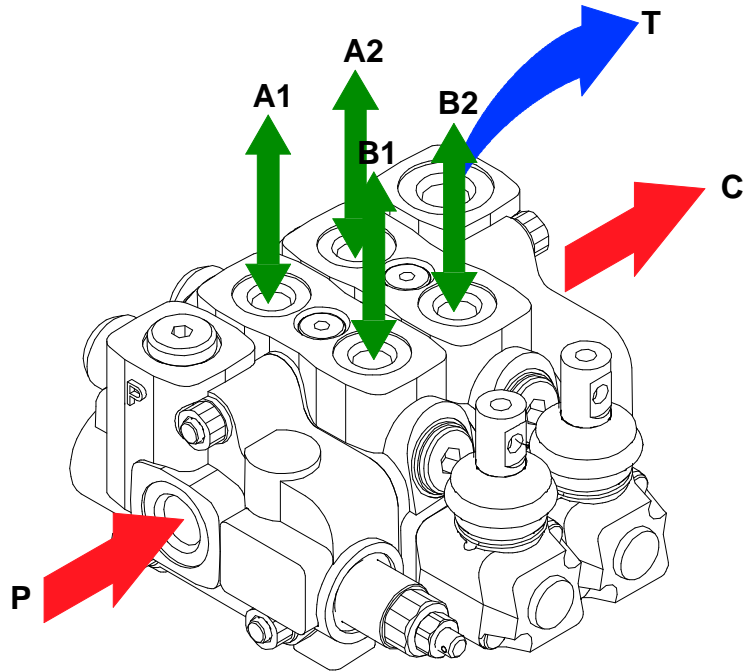


## RK



SD6

- SD6

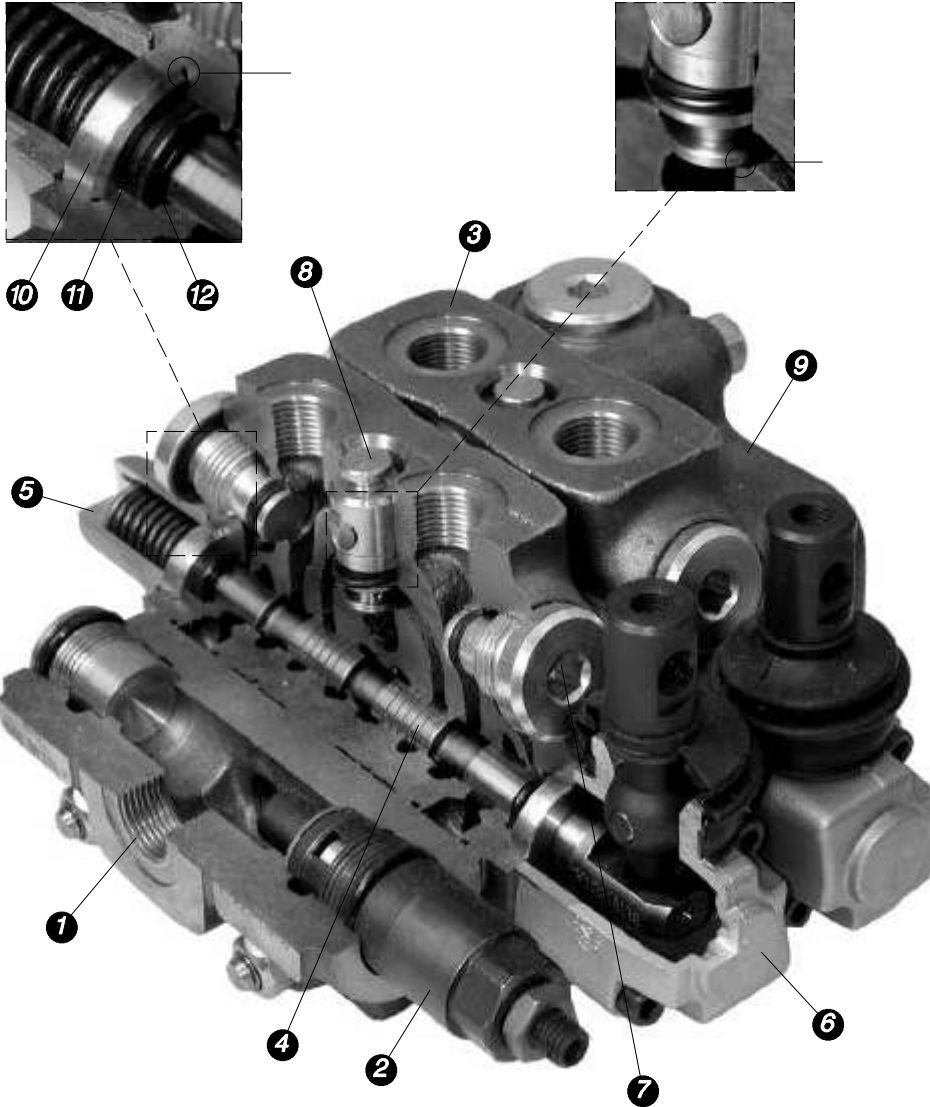


“carry-over”

	P		T C
BSP (ISO 228/1)	G 3/8	G 3/8	G 1/2
	35	35	50
	40	40	60
	30	30	60
UN-UNF (ISO 11926-1)	3/4- 16 (SAE 8)	9/16- 18 (SAE 6)	3/4- 16 (SAE 8)
	50	30	50
(ISO 262)	M18x1.5	M18x1.5	M22x1.5
	35	35	50
	40	40	40
	40	40	60

# SD6

SD6/2/AC(YG3- 175)/18L/18L/RC

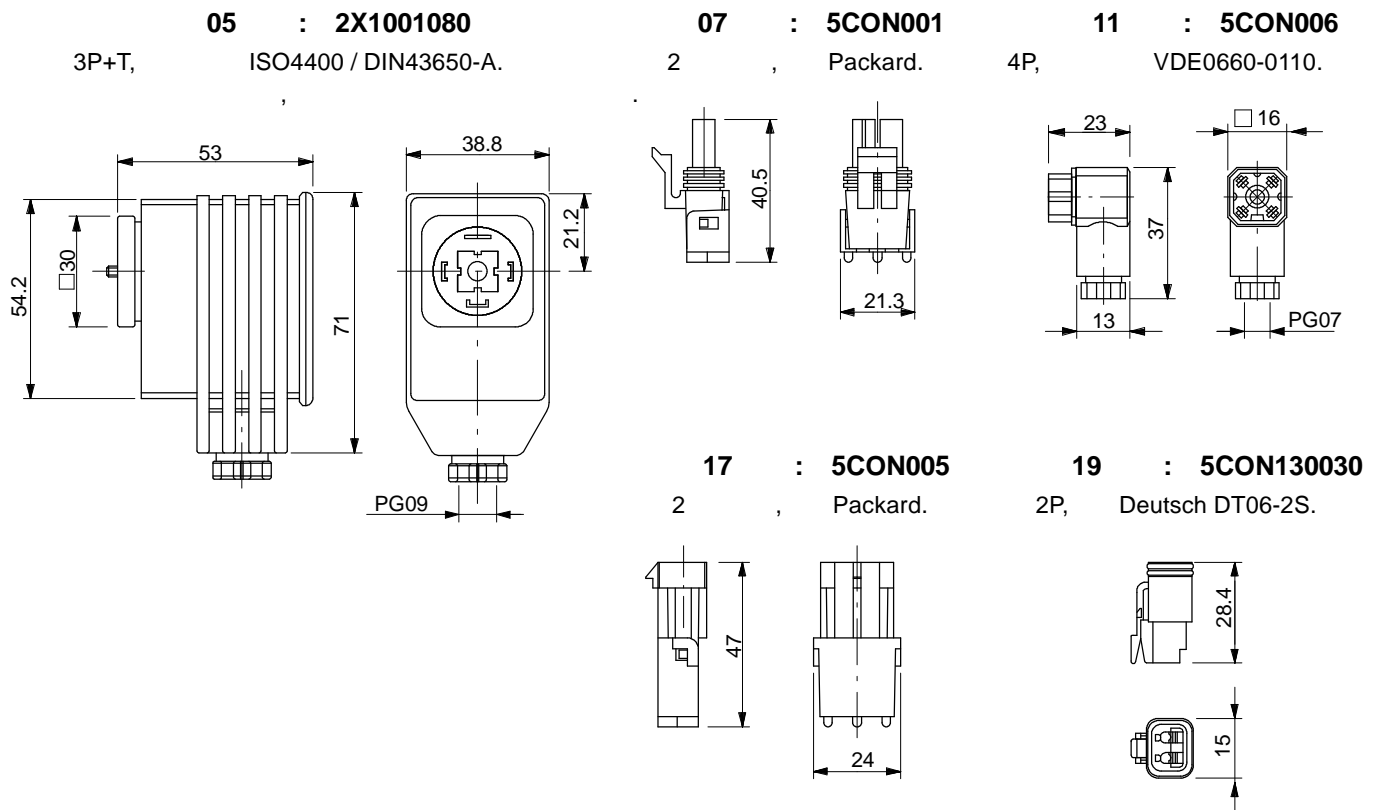
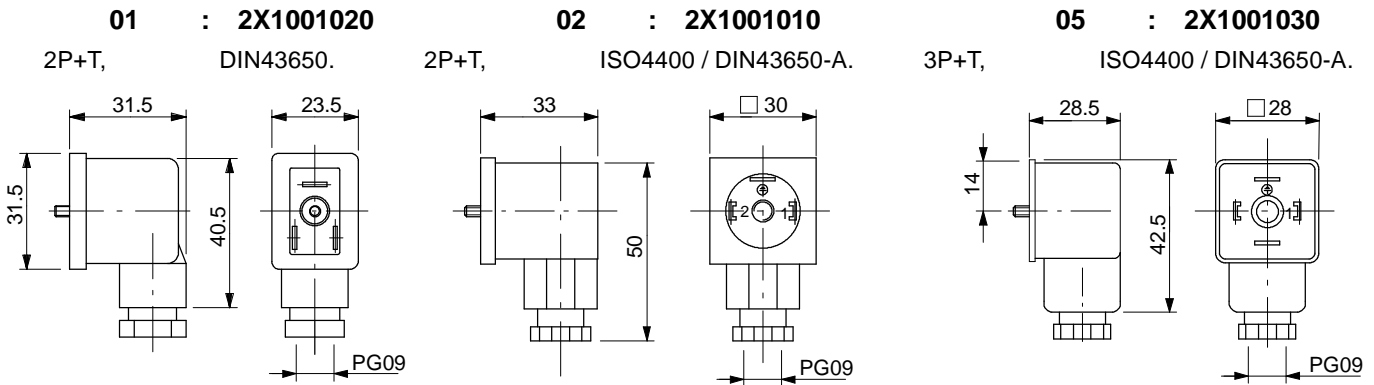


- 1)
- 2)
- 3)
- 4)
- 5) " "
- 6)
- 7)
- 8)
- 9)
- 10)
- 11) 16.26x2.18  
: 4ANE816314
- 12) 15.88x2.62  
: 4GUA115926

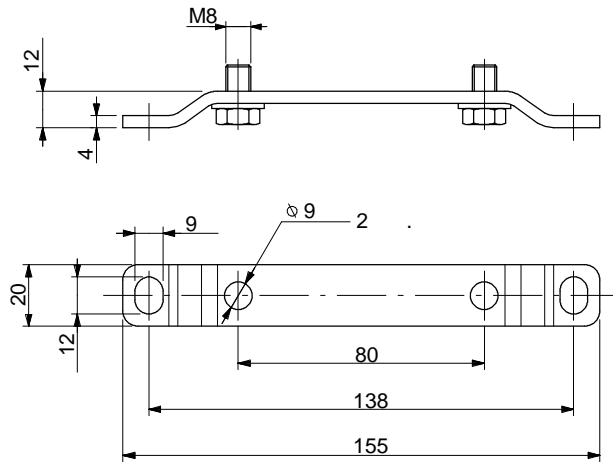
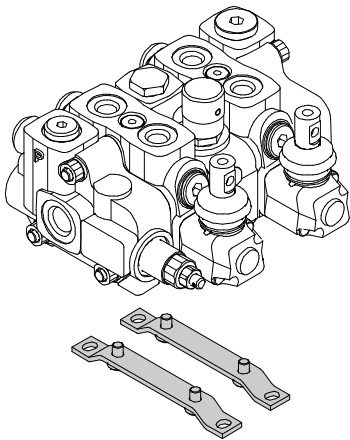
:

NLG12.





<b>C01</b>	2P + T	250 AC / 300 DC	10 A	.15	2	6-8	IP65
<b>C02</b>	2P + T	250 AC / 300 DC	10 A	.15	2	6-8	IP65
<b>C03</b>	3P + T	250 AC / 300 DC	10 A	.15	2	6-8	IP65
<b>C05</b>	3P + T	230 AC	1.5 A	.15	2	6-8	IP65
<b>C07</b>	2P	/	20 A	1-2.5	2	2.8-3.5	IP67
<b>C11</b>	4P	50 AC / 120 DC	6 A	0.14-0.5	2	4-7.5	IP65
<b>C17</b>	2P	/	20 A	1-2	2	2.8-3.5	IP67
<b>C</b>	2P	/	13 A	1-2	2	2.2-3.5	IP67



SD6 ( ) ( CVN).  
 : SD6/2/AC(YG3-175)/18L/18L/RC- <CVN>



(343) 222-00-21  
(343) 353-59-41  
info@hydront.ru  
www.hydront.ru

DBU001E