



SD 8



 **walvoil**
HYDRAULIC CONTROL SYSTEMS

SD8

1 12

“carry-over”.

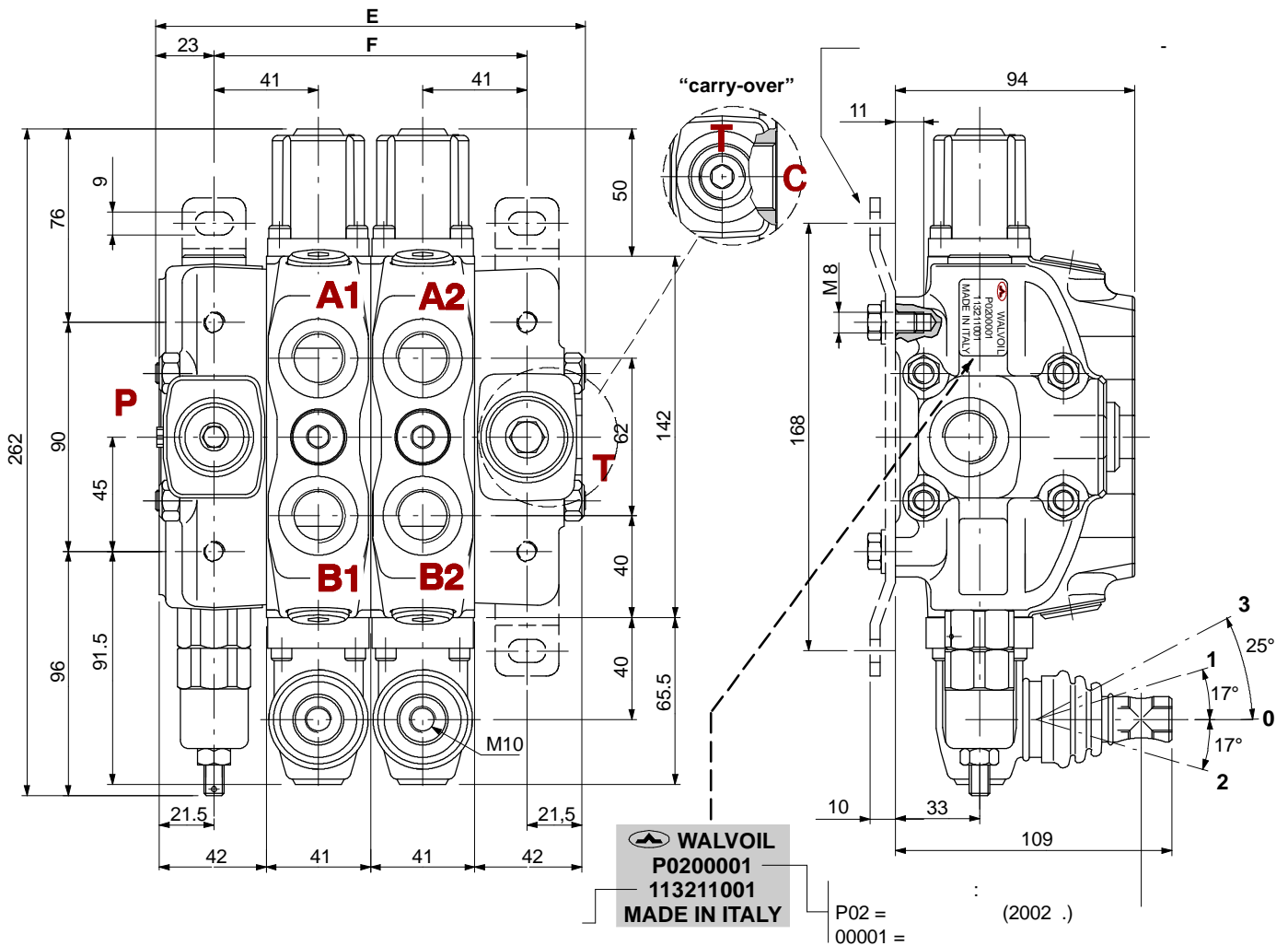
18



.....	4
.....	5
.....	6
.....	9
.....	10
.....	12
.....	13
.....	14
.....	16
R2	17
.....	18
.....	20
.....	21
“ ”	27
“ ”	37
.....	40
.....	44
CS	47
DFG	48
EI	49
.....	50
.....	51
.....	52
.....	54

40°C.

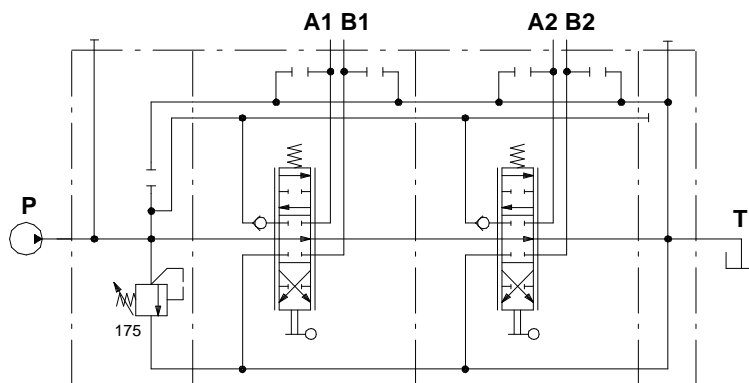
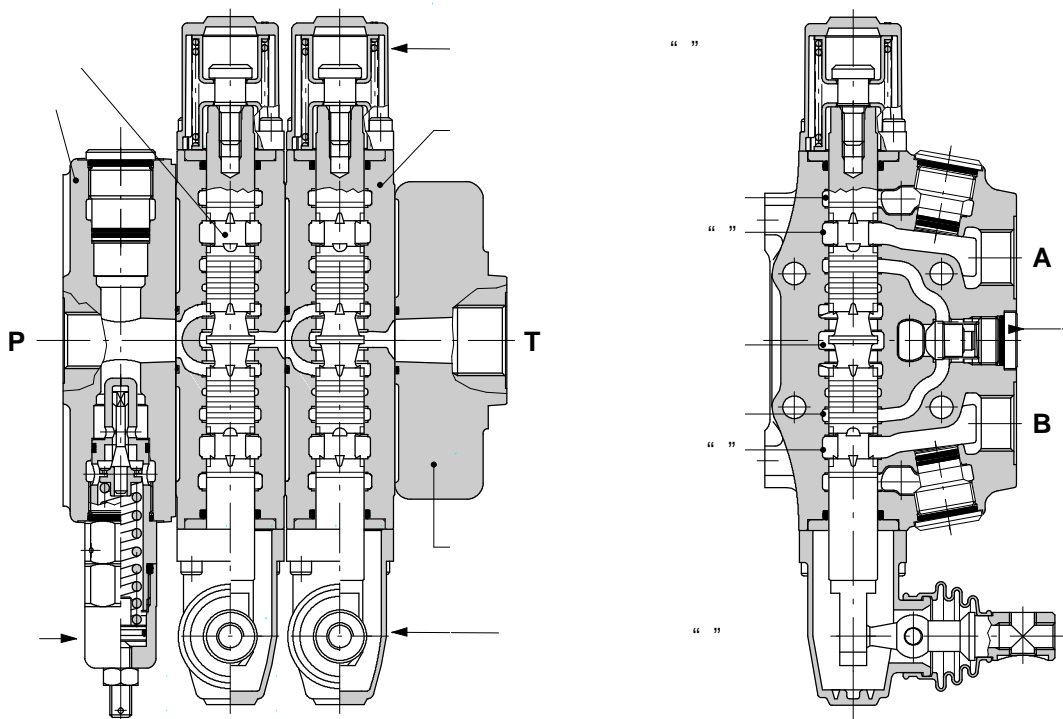
		80 /
()		315
		25
() -	$p=100$ 40°C	3 3/
	<i>NBR (Buna-N)</i>	-20°C 80°C
	<i>FPM ()</i>	-20°C 100°C
		15 75
		12
		400
		19/16 - ISO 4406
		-40°C 60°C
		30



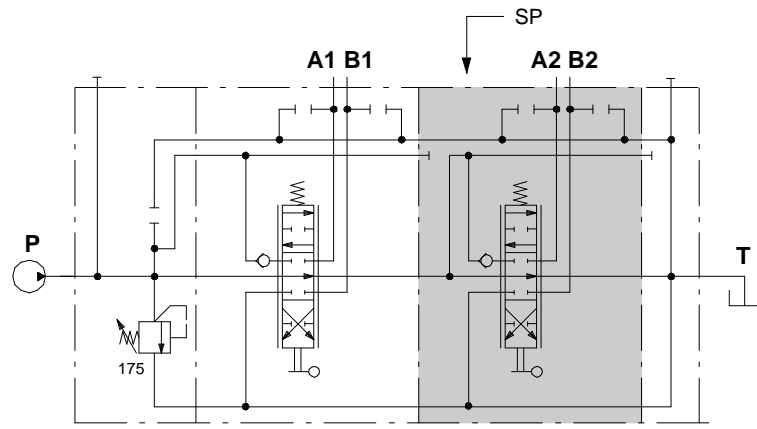
T	E	F	
SD8/1	128	82	7.2
SD8/2	169	123	10.5
SD8/3	210	164	13.8
SD8/4	251	205	17.1
SD8/5	292	246	20.1
SD8/6	333	287	23.4

T	E	F	
SD8/7	374	328	26.7
SD8/8	415	369	30
SD8/9	456	410	33.3
SD8/10	497	451	36.6
SD8/11	538	492	39.9
SD8/12	579	533	43.2

	BSP (ISO 228/1)	UN-UNF (ISO 11926-1)	(ISO 6149-1)
P	G 1/2	7/8-14 (SAE 10)	M22x1.5
	G 1/2	3/4-16 (SAE 8)	M22x1.5
"carry-over" C	G 3/4	7/8-14 (SAE 10)	M27x2
	G 1/4	9/16-18 (SAE 6)	G 1/4
	NPTF 1/8-27	NPTF 1/8-27	NPTF 1/8-27



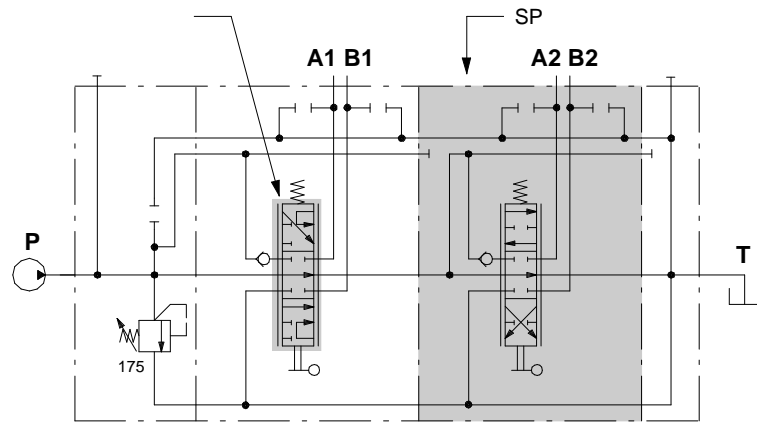
SD8/2/AC(YG3-175)/18L/18L/RC



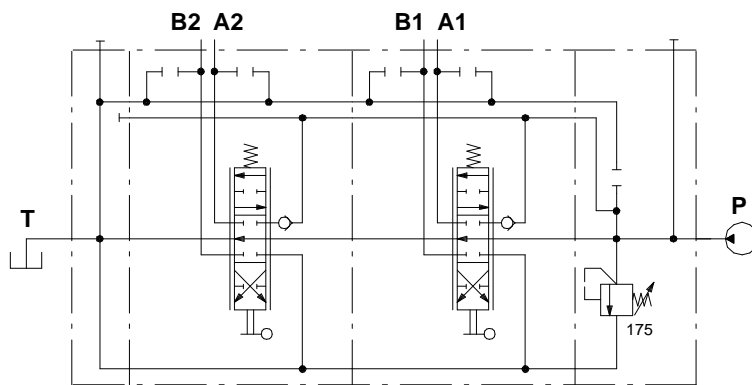
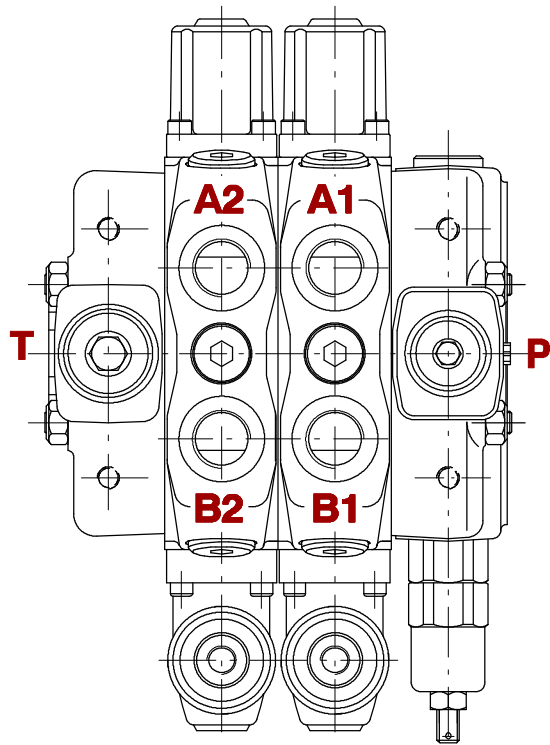
SD8/2/AC(YG3-175)/18L/SP-18L/RC

1S (2S . 22 23)

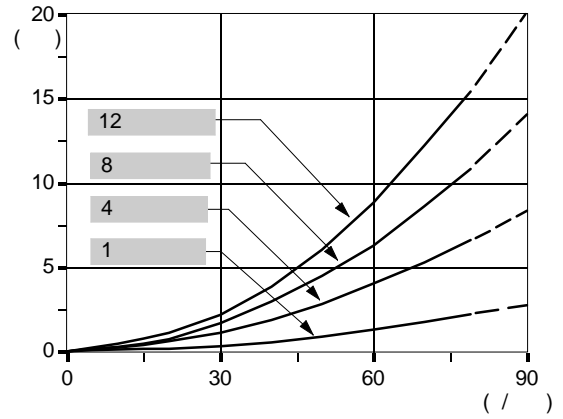
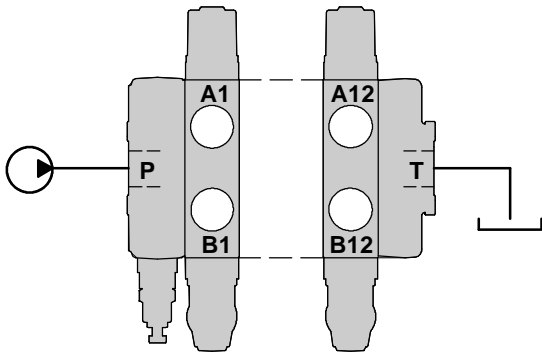
1S



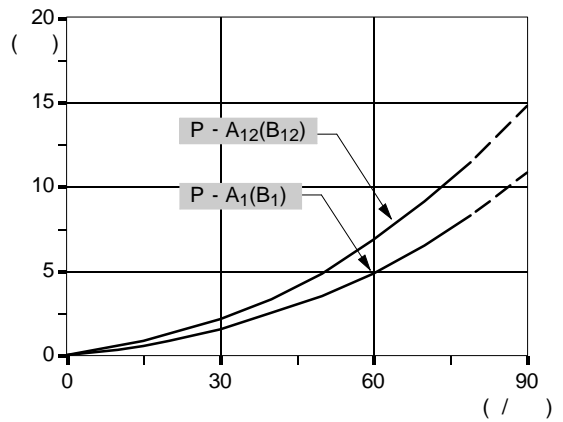
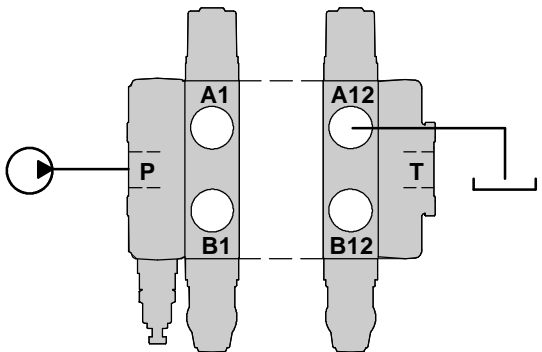
SD8/2/AC(YG3-175)/1S8L/SP-18L/RC



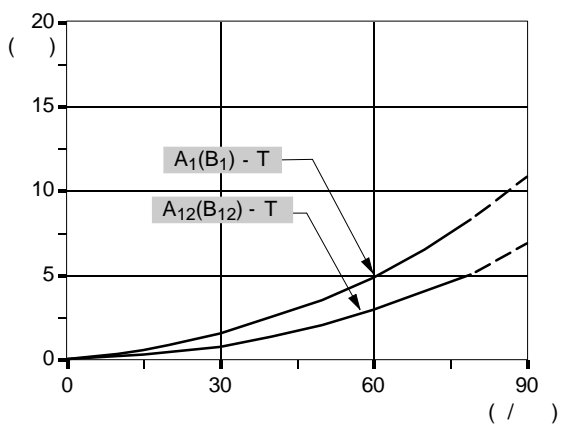
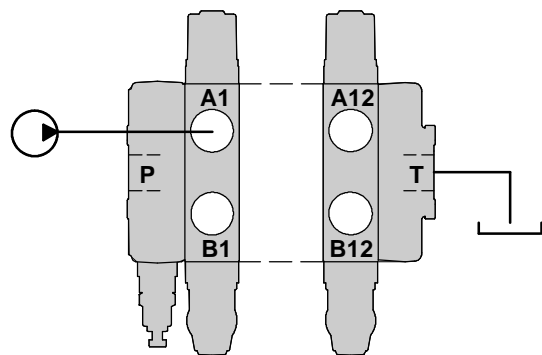
SD8/2/BC(YG3- 175)/18L/18L/RC



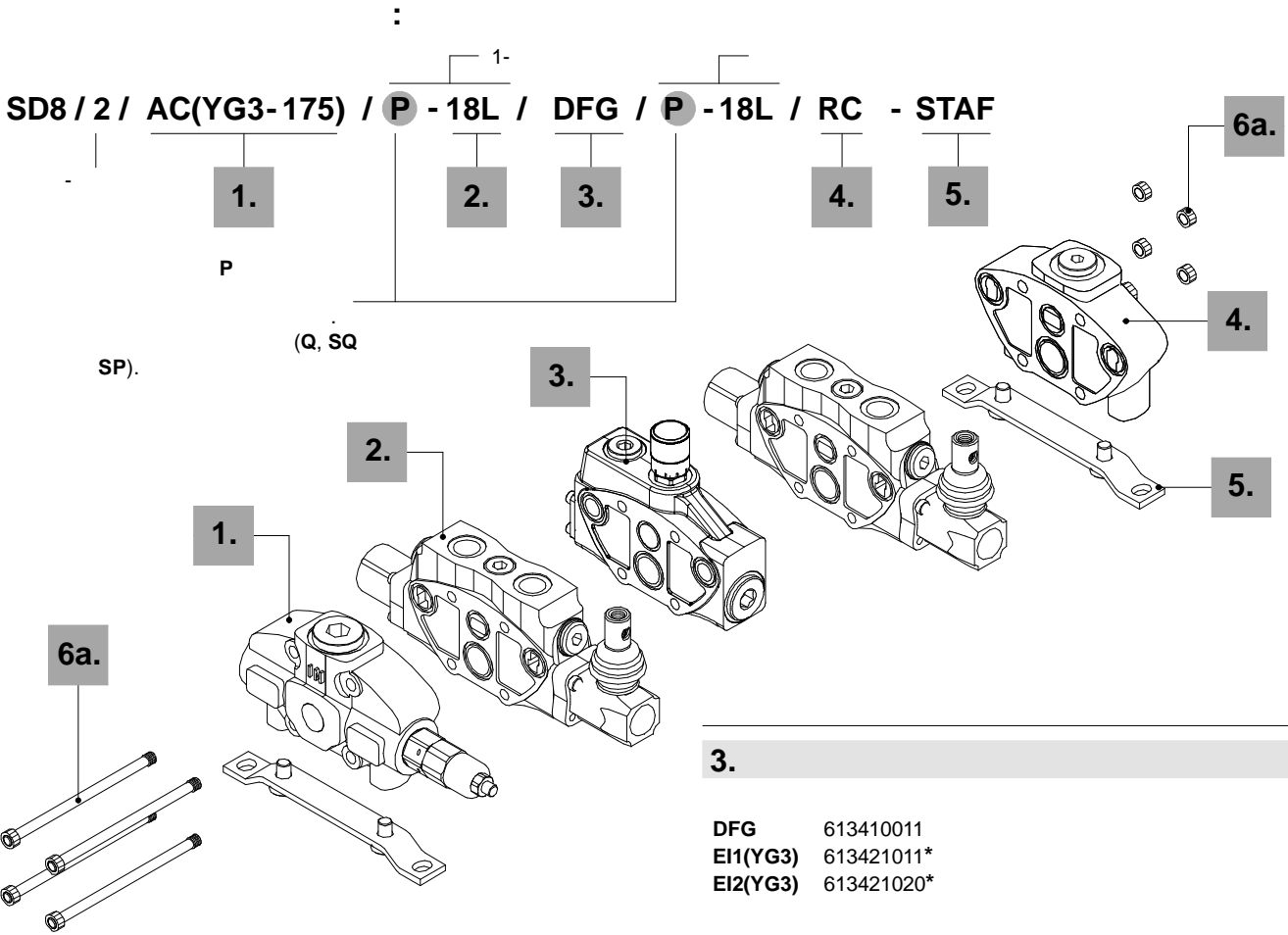
(1) (2)



(2) (1)



: 1



1. 14

AC(YG3-175)	613201007
AC(XG-120)	613201019
AC(SV)	613201020

2. 18

Q-18L	613151001	,
P-18L	613101001	,
P-1S8L	613111001	,
SP-18L	613121002	,

(P, SP, Q SQ)

()
17

3. 55

DFG	613410011
EH1(YG3)	613421011*
EI2(YG3)	613421020*

4. 61

RC	613300110	
RD	613300112	
RE	613300111	"carry-over"
RK	613300120	

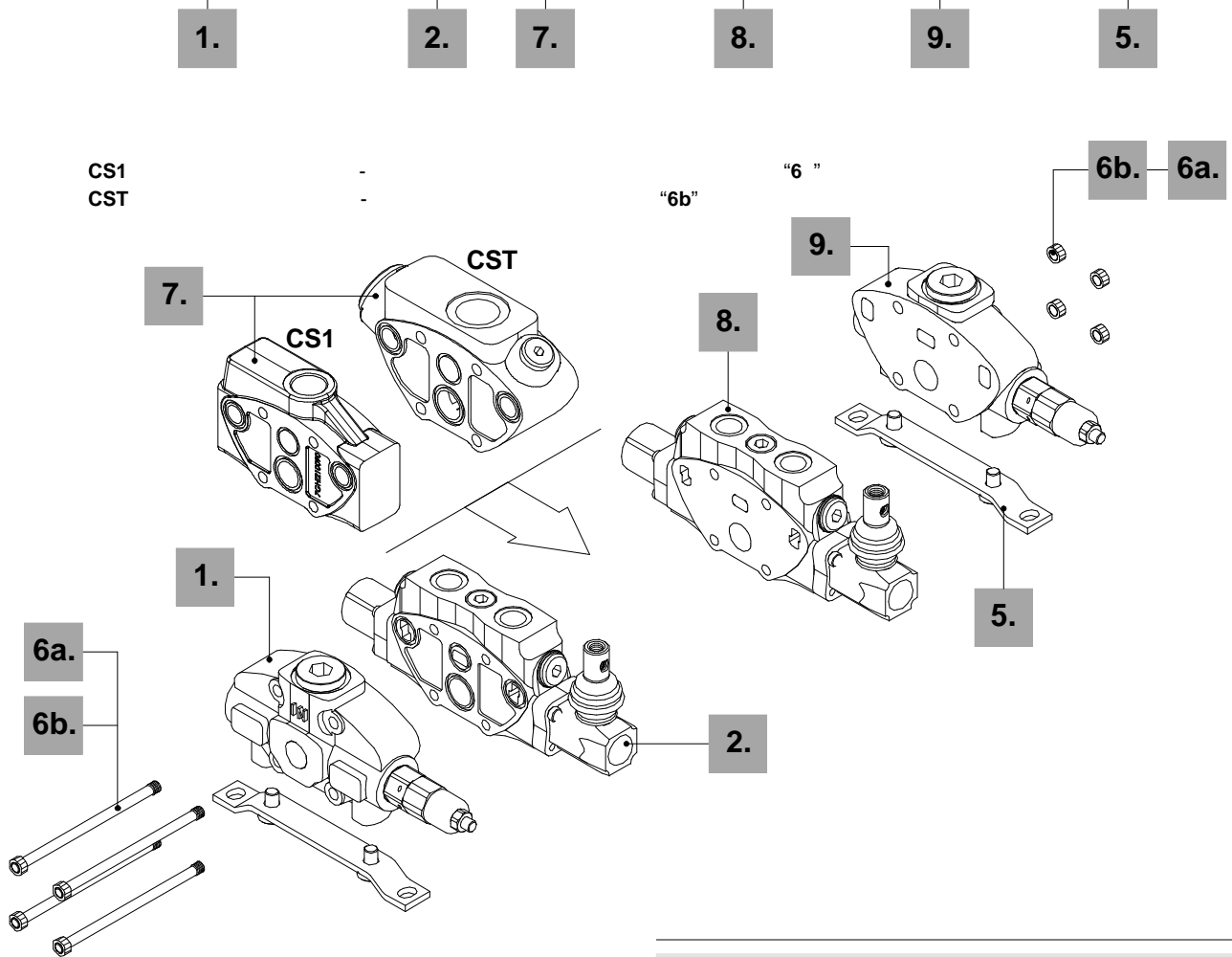
5. 63

STAF	5STA125190
------	------------

6a.

5TIR108128	1
5TIR108169	2
5TIR108210	3
5TIR108251	4
5TIR108292	5
5TIR108333	6
5TIR108374	7
5TIR108415	8
5TIR108456	9
5TIR108497	10
5TIR108538	11
5TIR108579	12

SD8 / 2 / AC(YG3-175) / P - 18L / CST / P - ED - 18L / BC(YG3-120) - STAF



6b.

CST

5TIR108301	4	(SMT)
5TIR108342	5	(CST)
5TIR108383	6	(CST)
5TIR108424	7	(CST)
5TIR108465	8	(CST)
5TIR108506	9	(CST)
5TIR108547	10	(CST)

7.

61

CST	613401400	G1
CS1	613401010	G3/4

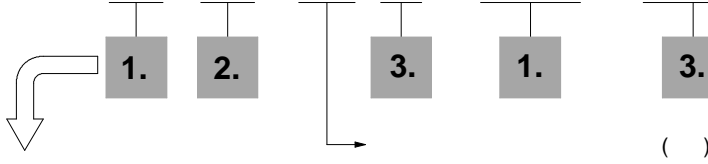
8.

Q-ED-18L	613151003	,
P-ED-18L	613101024	,
P-ED-1S8L	613111002	,
SP-ED-18L	613121003	,

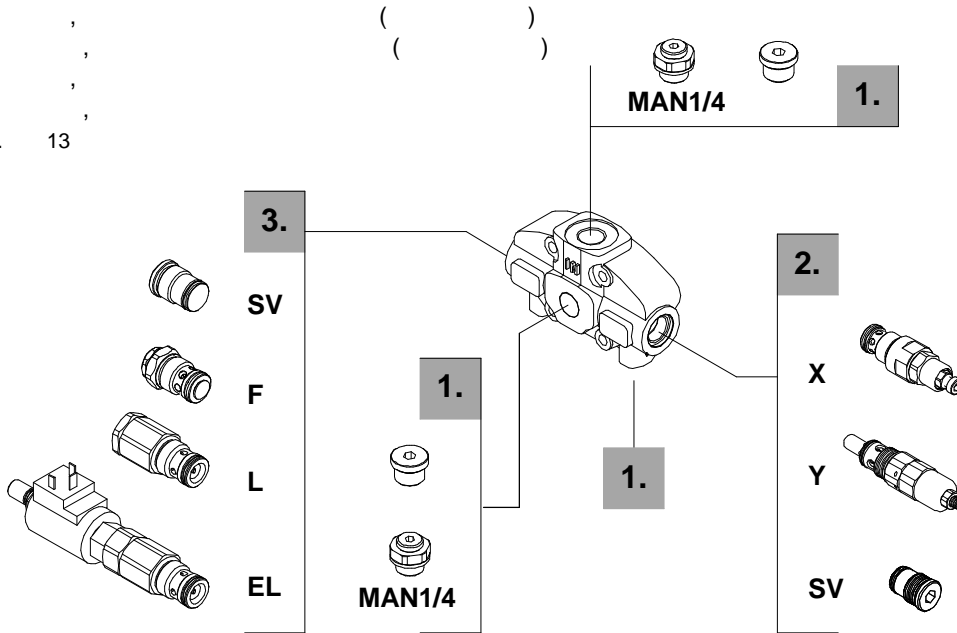
9.

BC(YG3-175)	613201009
BC(XG-120)	613201133
BC(SV)	613201134

FES D8 / AC (YG3 - 175) EL - MAN14 - 12VDC *



AC: ,
 AD: ,
 BC: ,
 BD: ,
 13



1. 13

3FIA108301 + 3XTAP727180
 3FIA108301 + 5MAN625220 G1/8"
 3FIA108301 + 5MAN627240 G1/4"

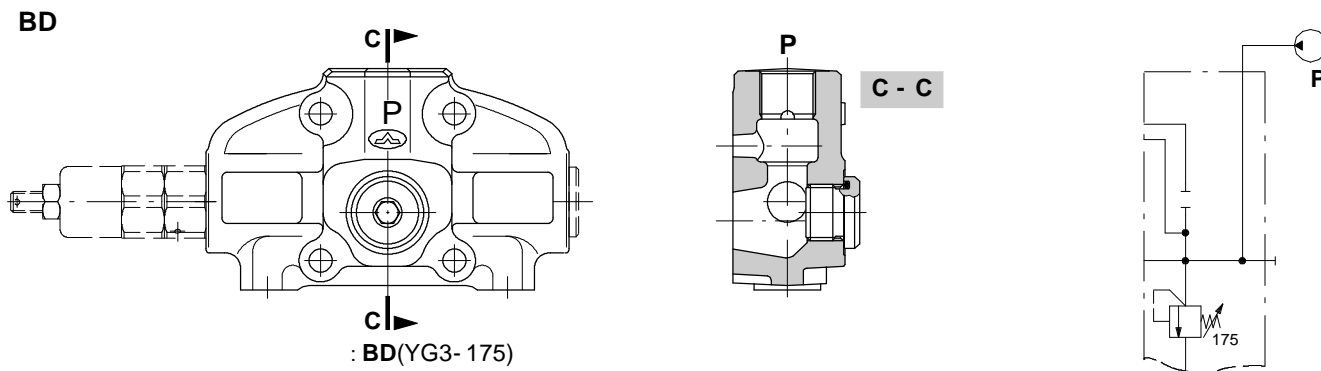
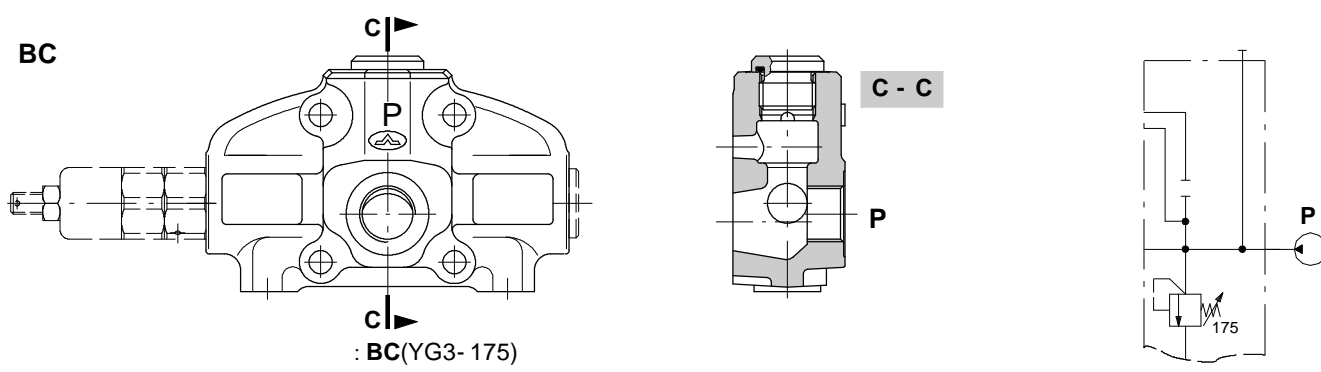
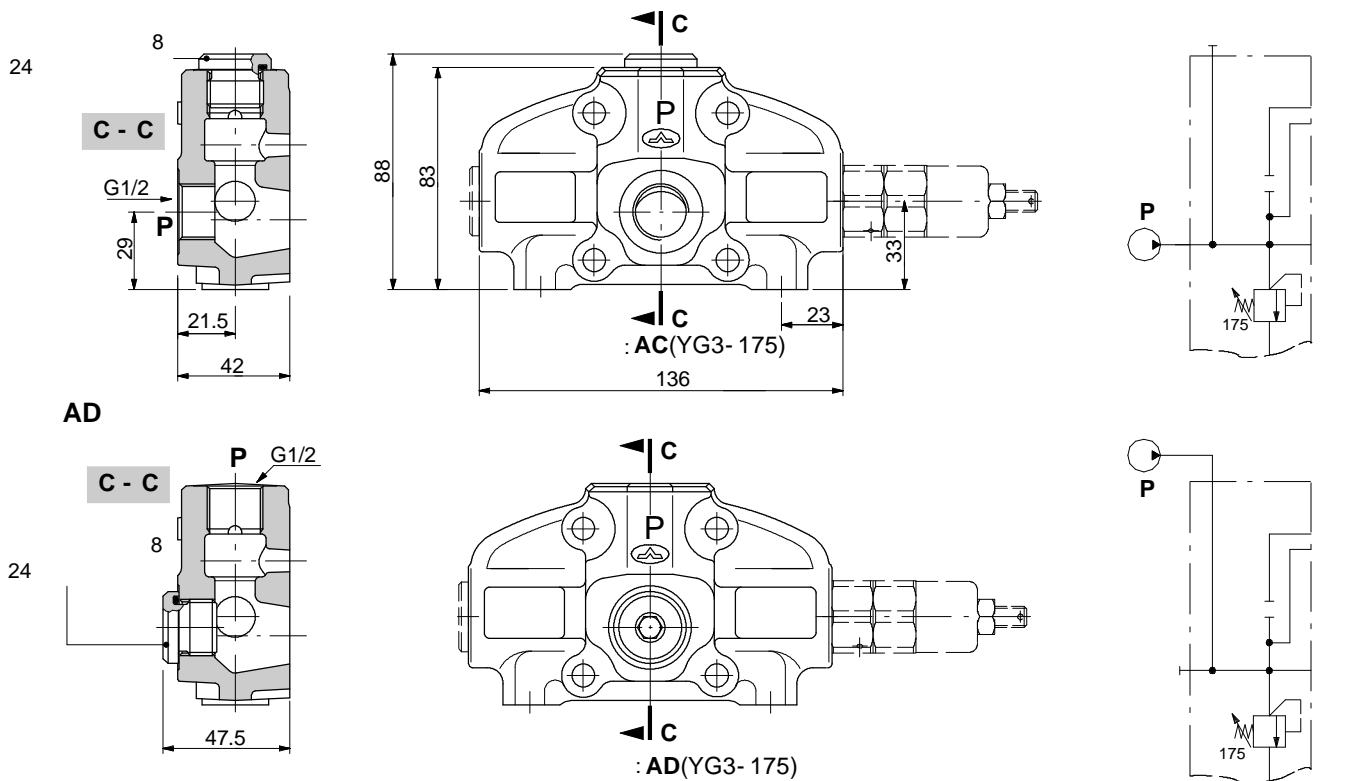
2. 14

MP150/1			X
(XG-125)	X006211120	25	315
			125
VMD10/1			Y ()
(YG1-80)	3XCAR110212	63	125
			80
(YG2-125)	3XCAR110212	100	160
			125
(YG3-175)	3XCAR110213	125	250
			175
(YG4-220)	3XCAR110214	200	315
			220
		10 /	
SV	XTAP526340	()	

3. 16

F	3XCAR410200	
L	XCAR410311	
EL	YCAR410305	
	YCAR410320	12 DC
	XTAP526340	24 DC

()

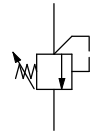


VMD10 (Y G 3 - 175)

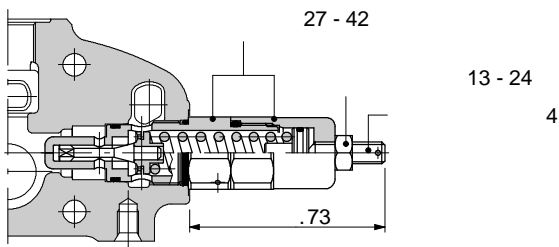
(1, 2, 3, 4)

(G, H)

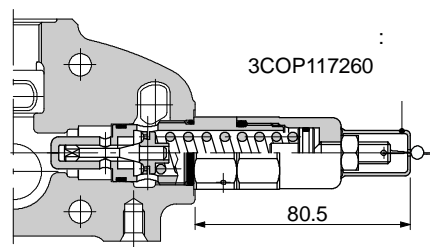
14)



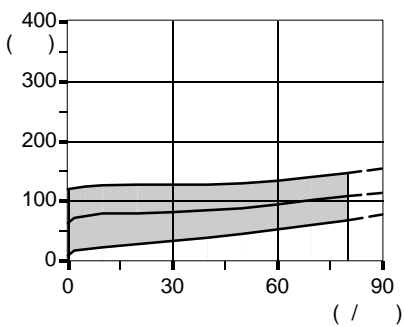
G:



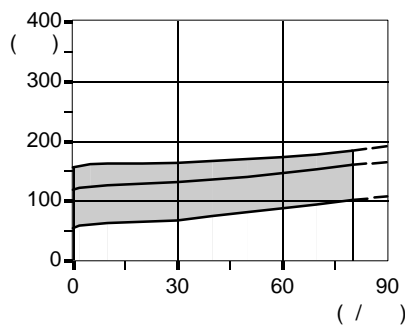
H:



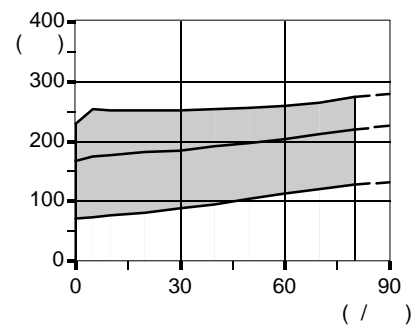
1 ()



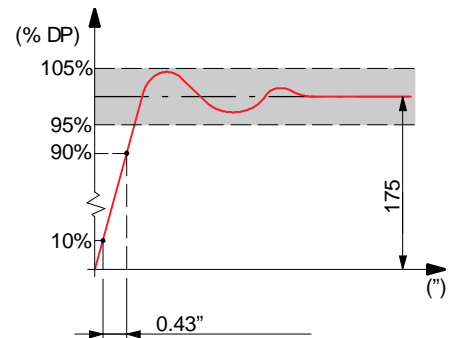
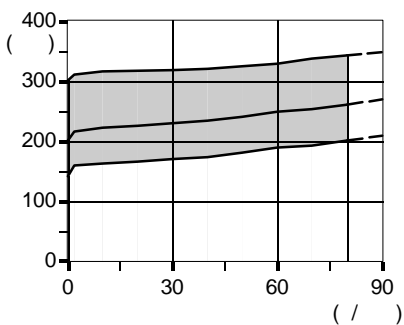
2 ()



3 ()

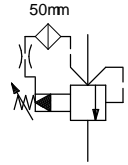


4 ()



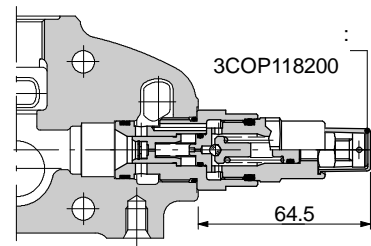
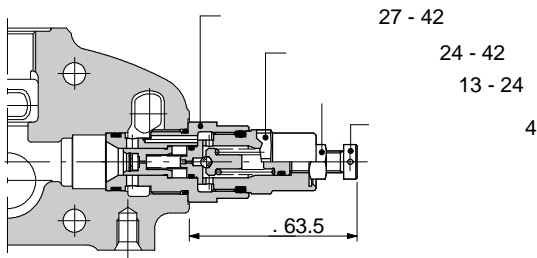
VMP150 (X G - 120)

(G, Z) 14

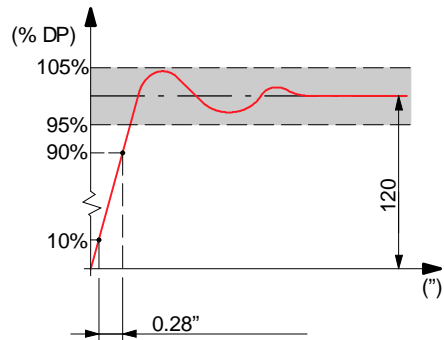
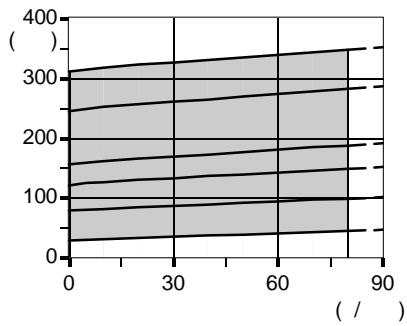


G:

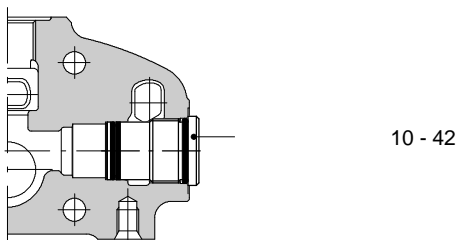
Z:

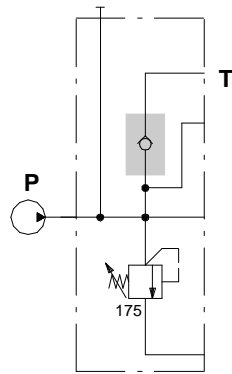
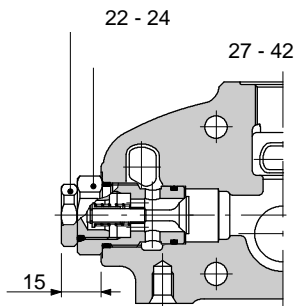


3 ()

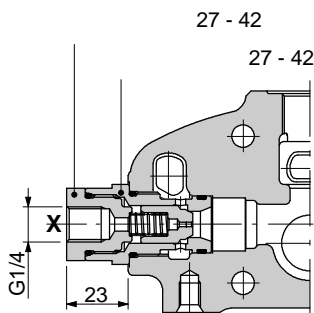
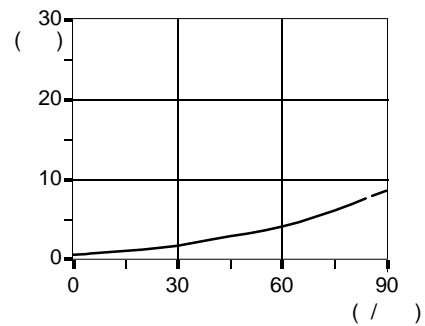


SV: ()

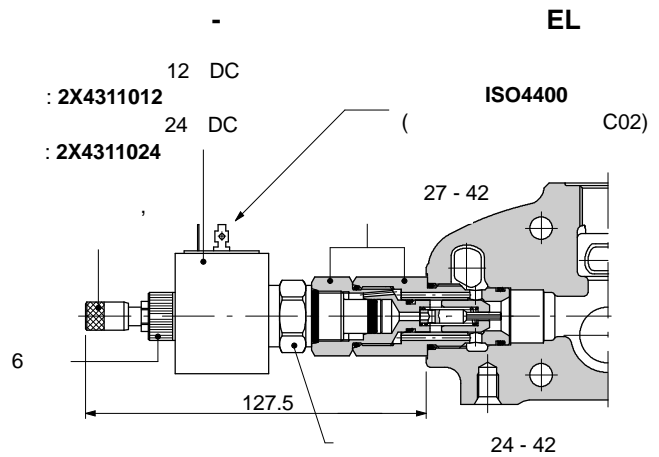




: AC(YG3-175)F

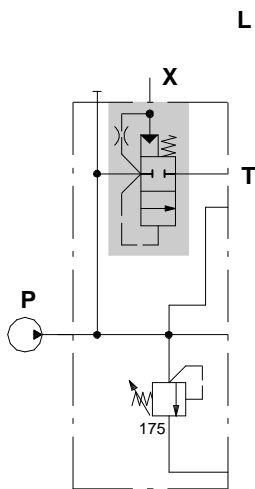


: 10 c³/ 100

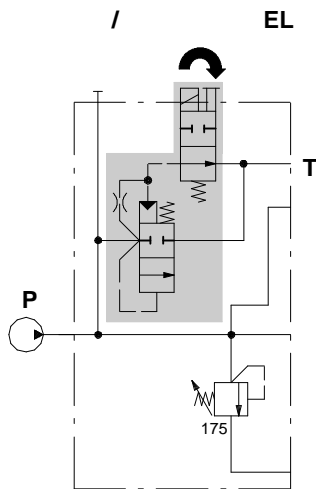


: 2X4311012
: 2X4311024

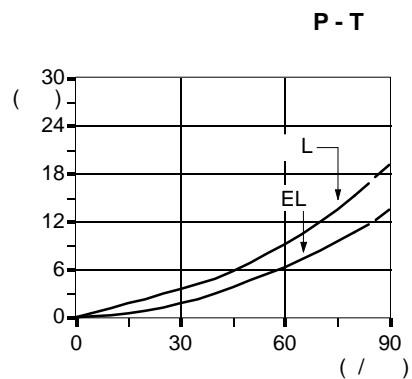
- : ±10%
- : 19
- : 1.58 A - 12 DC
- : 0.81 A - 24 DC
- : F
- : IP65
- : 100%

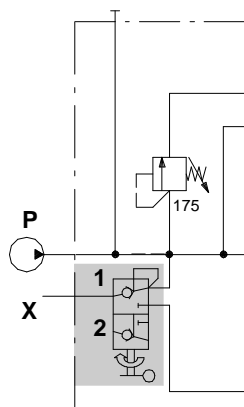
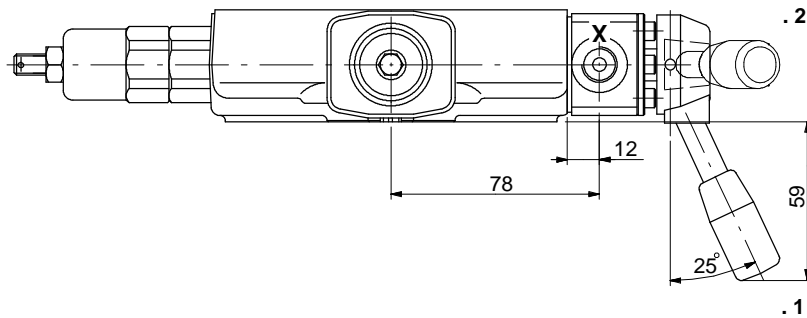
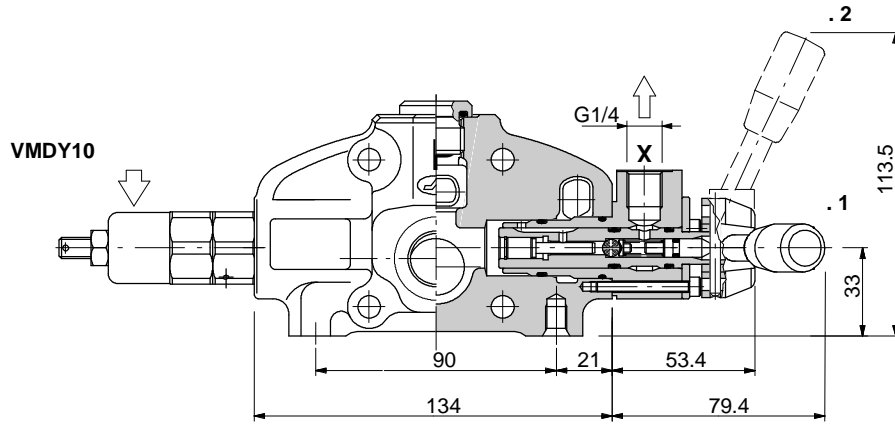


: AC(YG3-175)L

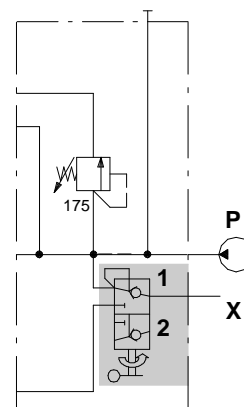


: AC(YG3-175)EL-12VDC





AC(YG3-175)R2
:613201117



BC(YG3-175)R2
:613201118

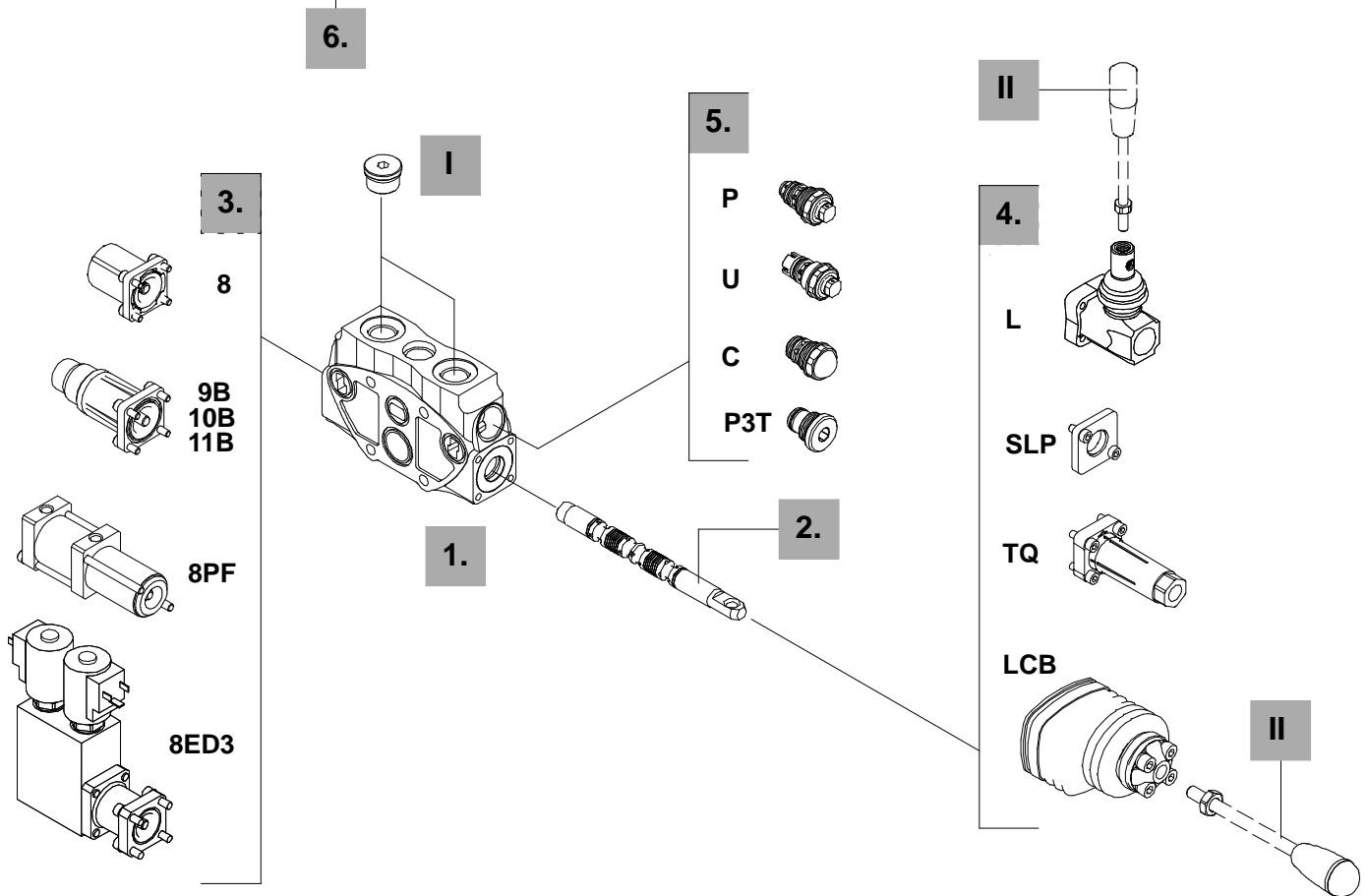
SD8

EL SD8 / P - 1 8 L . P 1 (G3 - 100) *

1. 2. 3. 4. 5.

1
2
3

EL SD8 / P - 1M 8IM



1. 20

Q	5EL1083010	,
P	5EL1083000	,
SQ	5EL3083020	,
SP	5EL3083010	,

2. 21

1	3CU2310100	
1A	3CU2321100	, 3-
1B	3CU2322100	, 3-
1S	3CU2311102	, 3-
1CSG	3CU2310250	1, 70 /
1M	3CU2310420	1, 70 /

2.		21	
2	3CU2325100	, 3-	
2H	3CU2325225	, 3-	
2S	3CU2327100	, 3-	
3	3CU2331110	,	
4	3CU2335100	, 3-	
		, 3-	
		" "	25
5B	3CU2343100	, 4-	3
8F	3CU2361100	, 4-	

3.		27	
7FT	5V07208100		
8	5V08108010		
8D	5V08108202	,	8
8D1	5V08108210	,	8
8D2	5V08108220	,	8
8TL	5V08108310	, 8,	
19	5V19108000 2-	,	1
20	5V19108000 2-	,	2
8IJ1	5V08108871*	,	1
8IJ2	5V08108861*	,	2
8IJ3	5V08108851*	,	1 2
8MHE3(NC)	5V08108541		
		ON/OFF,	
8MHE3(NO)	5V08108540	,	
9B	5V09108040	1-	
10B	5V10108040	2-	
11B	5V11108040	1- 2-	
11	5V11108000	1- , 2-	
15	5V15108000 2-	, , 1-	
8EP3	5V08108735 ON/OFF		12 DC
	5V08108740 ON/OFF		24 DC
8ED3	5V08108360 ON/OFF		12 DC
	5V08108361 ON/OFF		24 DC
8PF	5V08108705	.	
8MG3(NO)	5V08105660		1 2

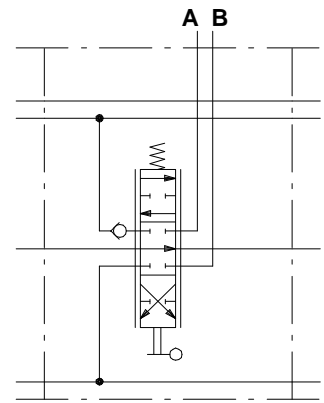
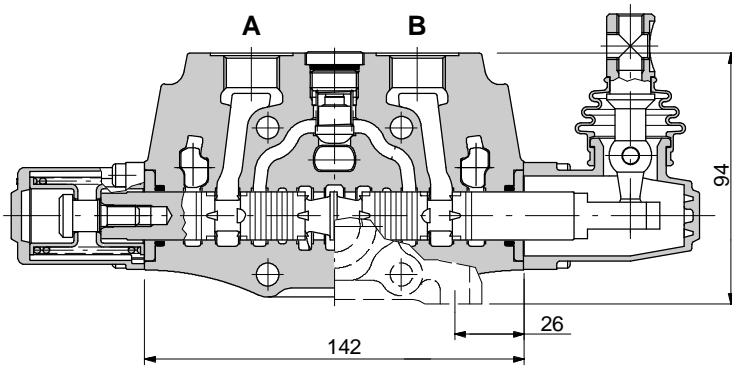
3.		27	
		27
8CR	5V08108022 3-	,	
13C	5V13208020 4-	,	8F
		3;	5B

4.		37	
L	5LEV108000		
LF3	5LEV108710		
LB	5LEV308000		
SLP	5COP108000	,	
SLCY	5COP208060	,	
TQ	5TEL108110		CD
LCB	5CLO208000		2-

5.		44	
PR(G1-30)	XCAR208110	15 35	30
PM(G1-50)	XCAR208109	35 70	50
P(G3-100)	3XCAR208113	63 220	100
P(G4-200)	3XCAR208114	180 350	200
U(G2-63)	XCAR308112	50 125	63
U(G3-100)	XCAR308115	100 250	100
U(G4-200)	XCAR308114	160 315	200
		10 /	
C	XCAR408110		
DST	3XTAP624180		
P3T	3XTAP524290		

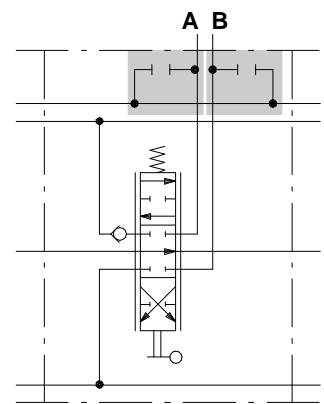
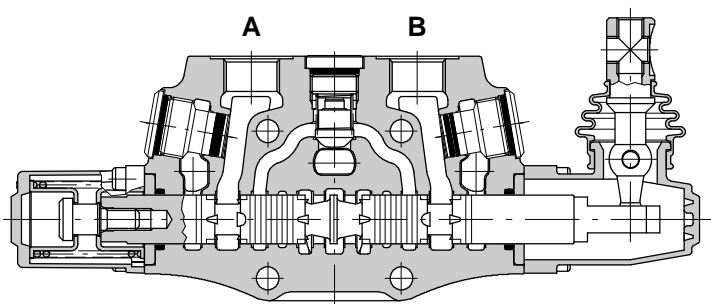
6.		40	
		ON/OFF	
I		" " " "	
G 1/2	3XTAP727180		
II			
AL01/M10x200	170012020	L,	200
AL08/M12x200	170013120	LCB,	200

Q



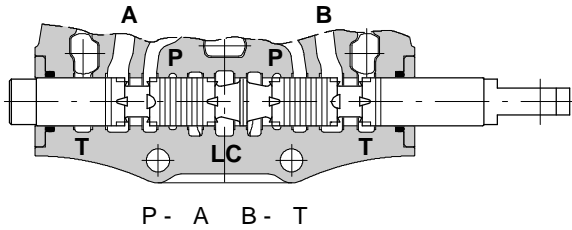
Q-18L

P

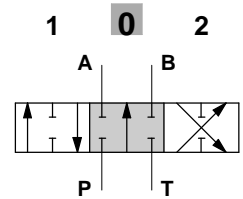
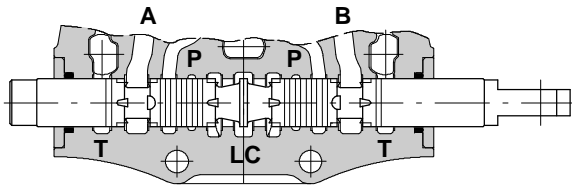
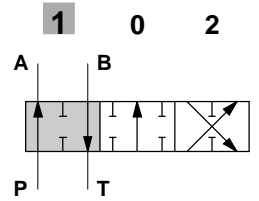


P-18L

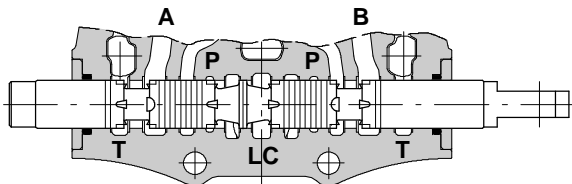
1



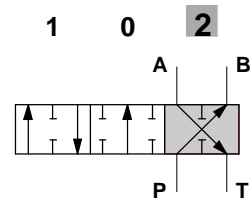
- +7



P - A - B - T

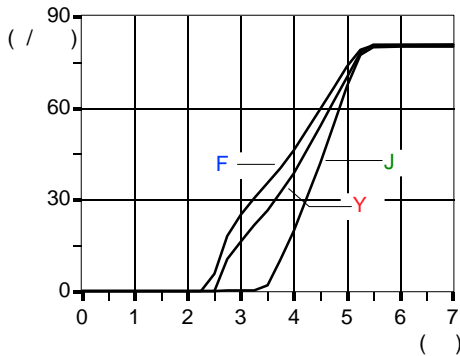


- -7



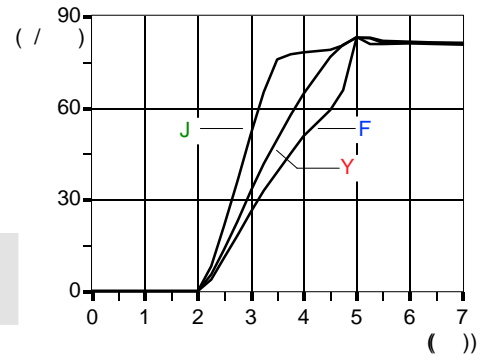
P - A(B)

A(B) - T



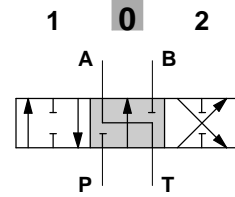
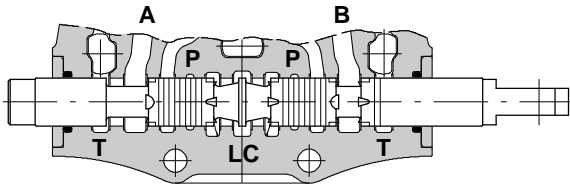
Q = 80 l/min

- F P_c = 63
- Y P_c = 100
- J P_c = 250



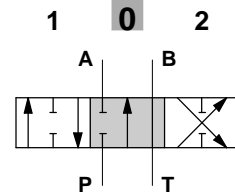
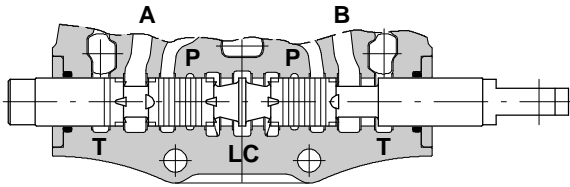
SD8

1



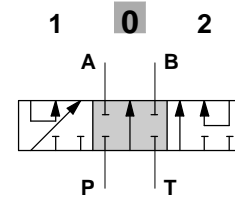
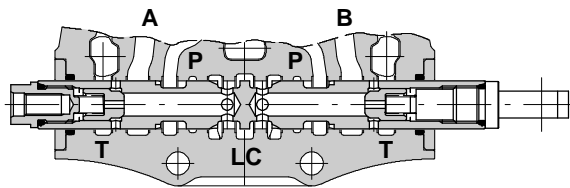
P - - , A - T ,

1



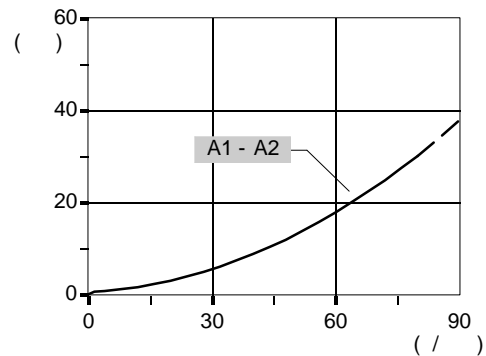
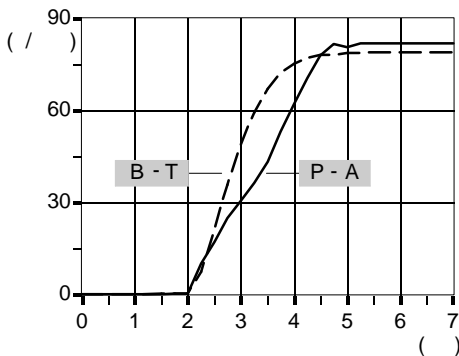
P - - , B - T ,

1S

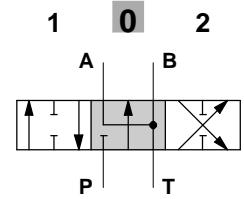
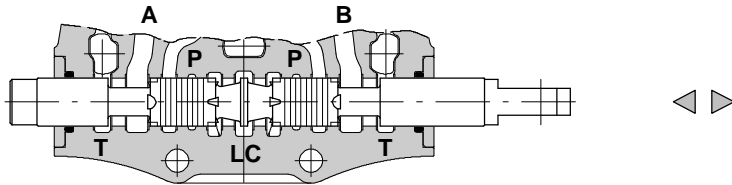


P - A - B - T ,

$Q = 80 / / P_{()} = 250$

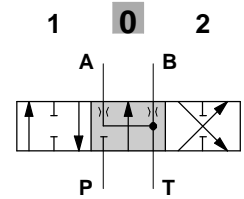
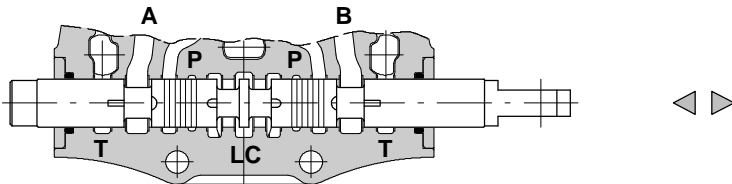


2



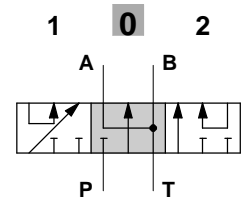
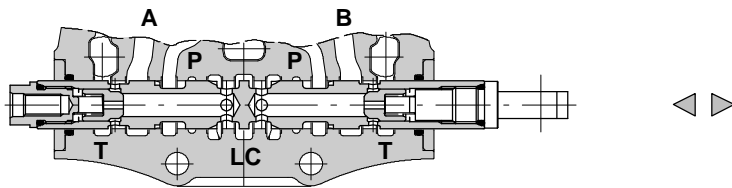
P - , -B-T ,

2H



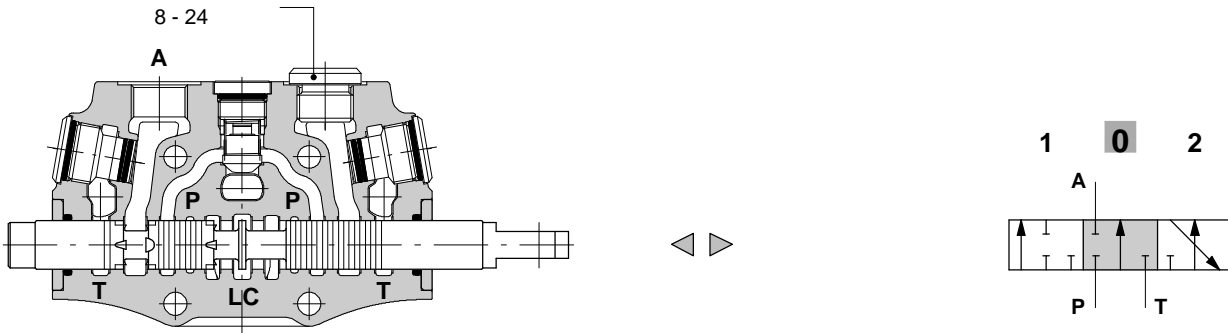
P - , -B-T ,

2S



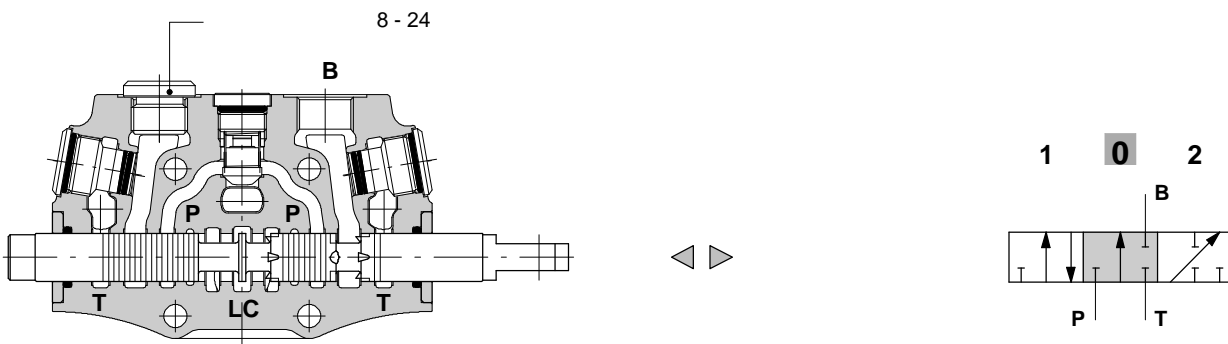
P - , -B-T ,

3



P- - - ,

4

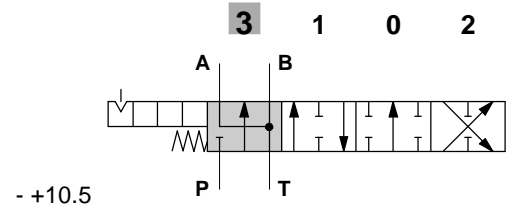
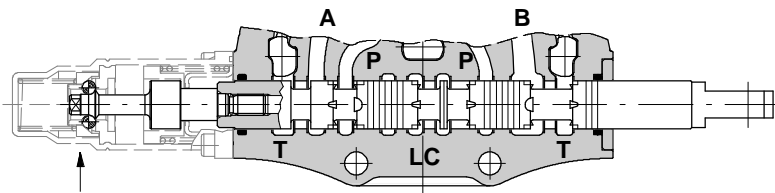


P- - - ,

5B

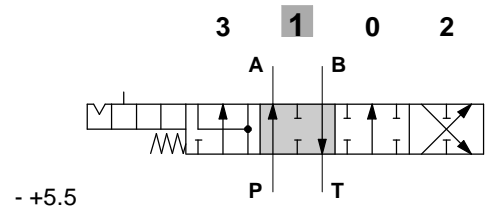
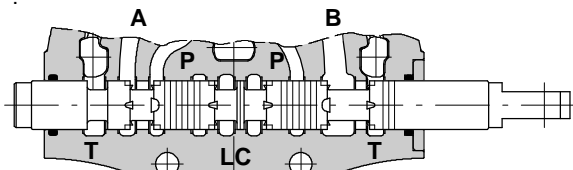
P - 5 5EL108320A.

13C.



500 ±10% A - B - T

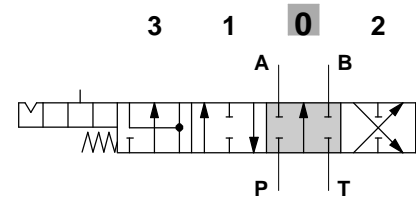
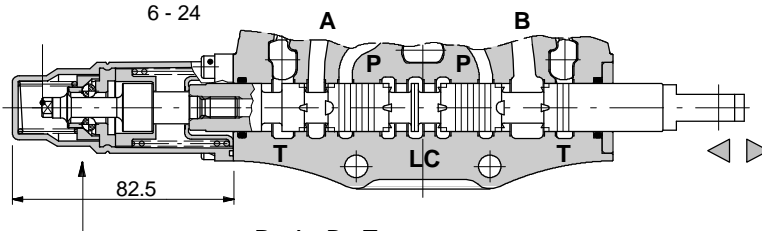
170 ±10%



4 - 6.6

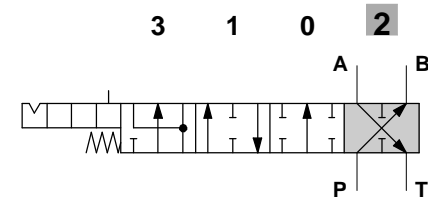
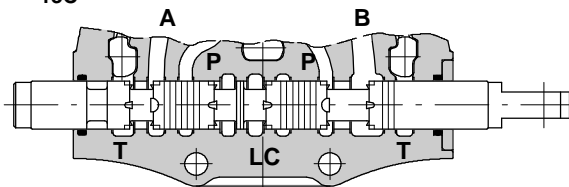
P - B - T

6 - 24



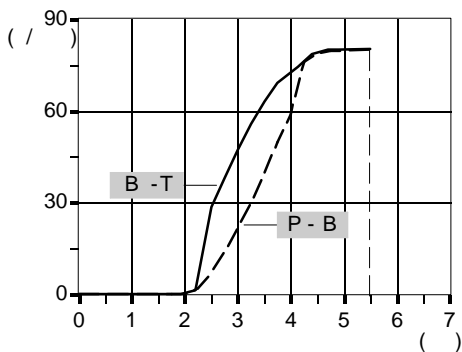
P - A - B - T

13C

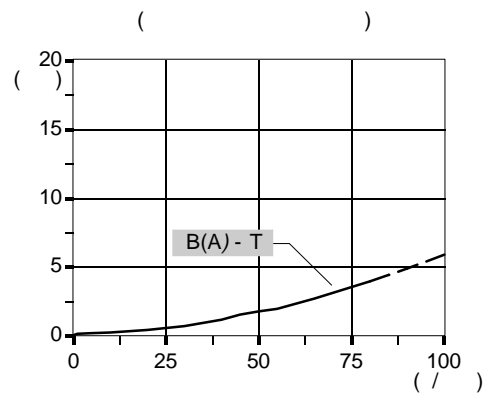


P - B - T

Q = 80 / P () = 100

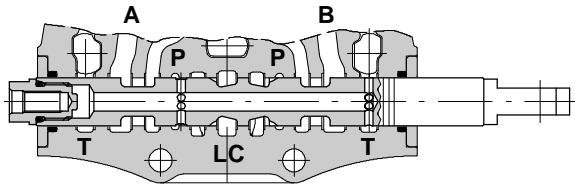


3

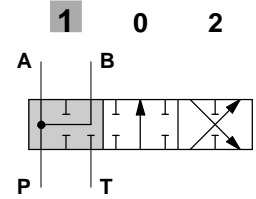


8F

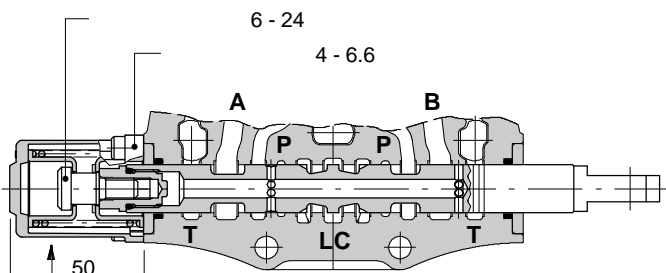
“ ” 8CR.



P + B - ()

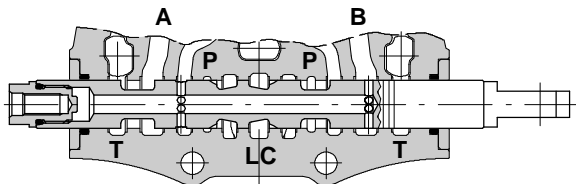
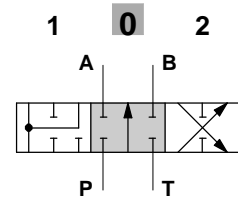


- +6

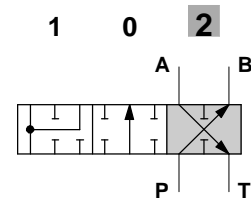


P - A - B - T

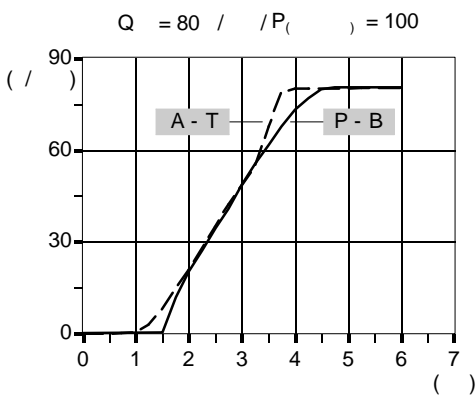
8CR



P - B - T

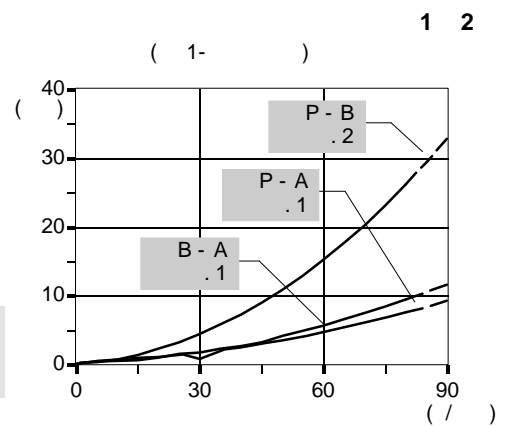


- -6

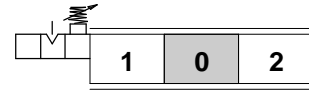
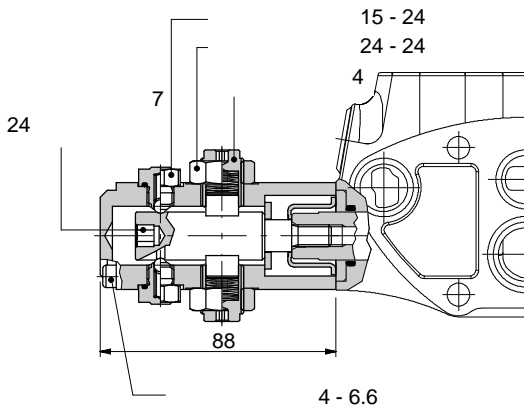


$Q = 80 \text{ l/min}$

F	$P_t = 63$
Y	$P_t = 100$
J	$P_t = 250$



7FT



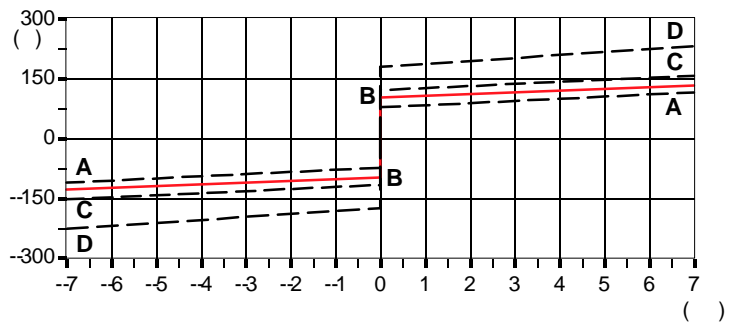
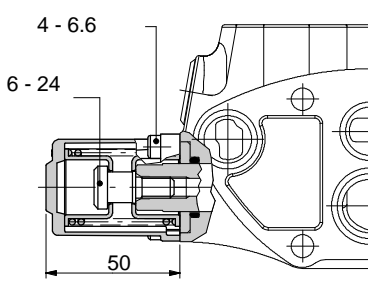
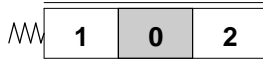
8

(.) .

(8MA 5V081082400)

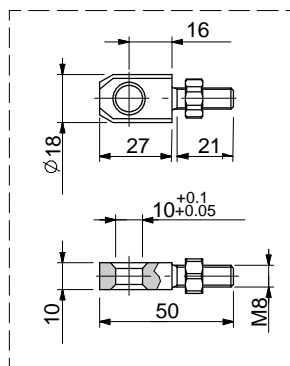
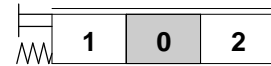
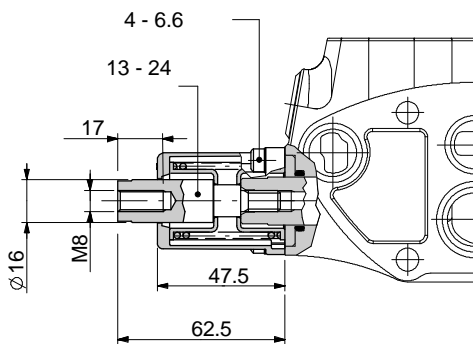
(8MC 5V08208000)

D (8MD 5V08408000).

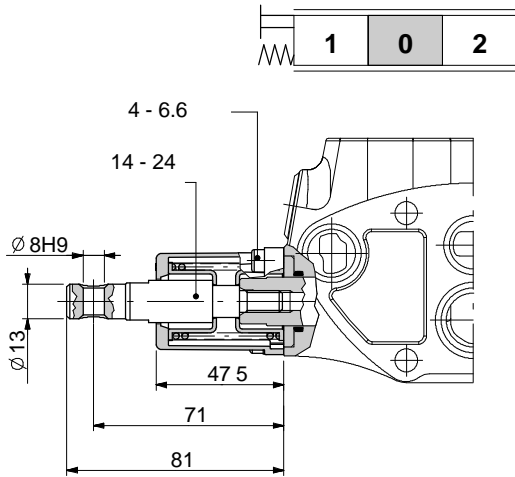


8D

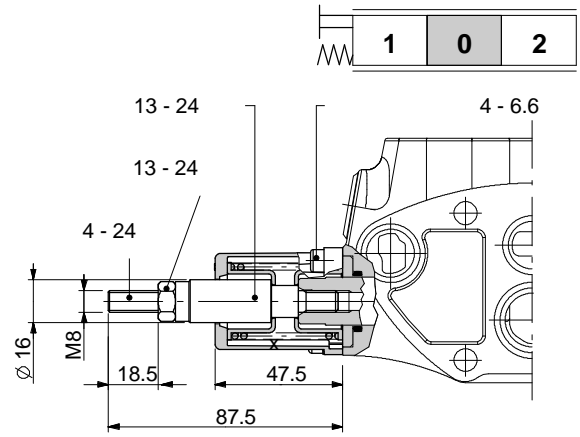
5PER318500



8D1

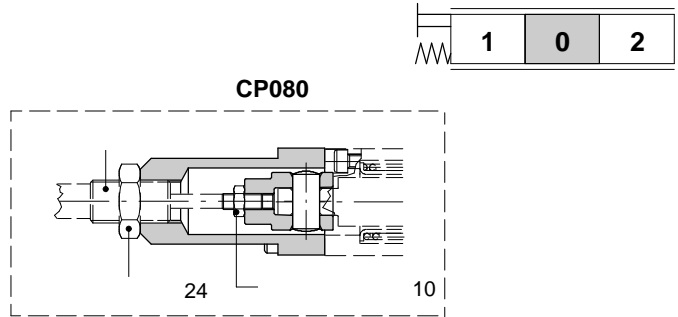
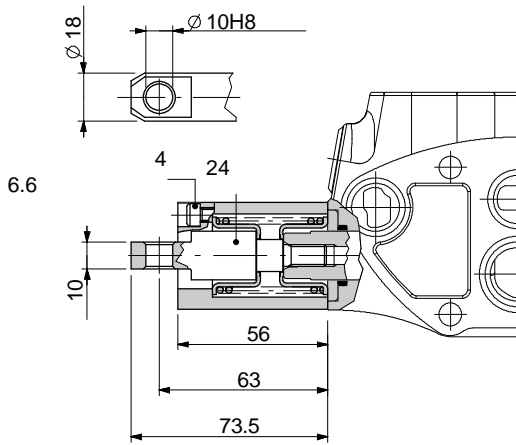


8D2



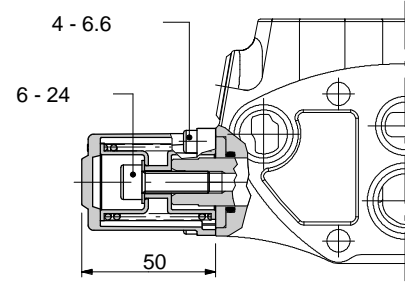
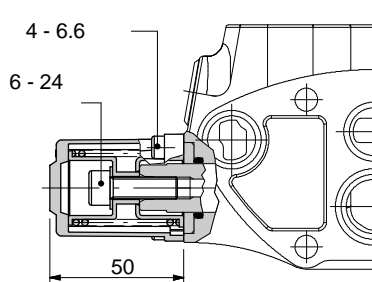
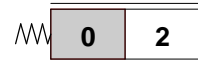
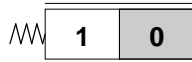
8TL

CP080 (5TEL408005)

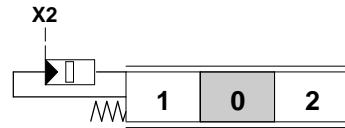
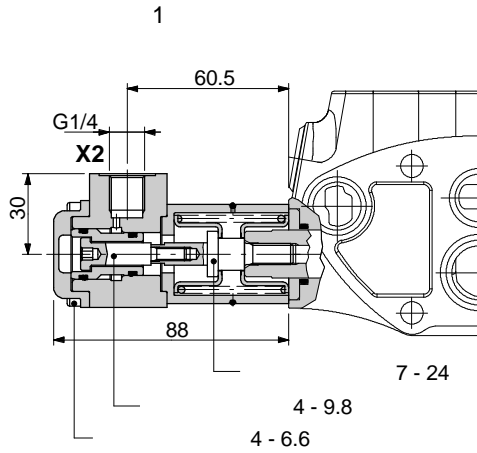


19

20

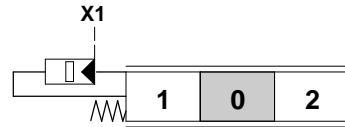
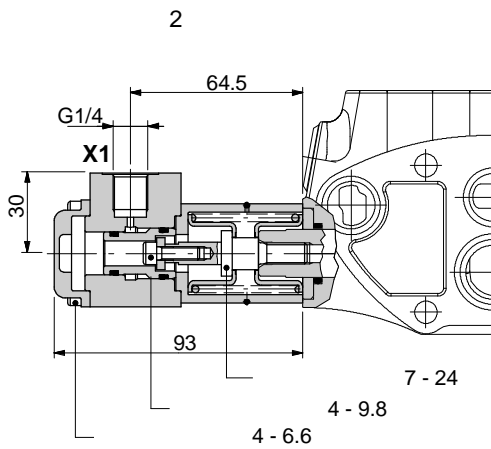


8IJ1



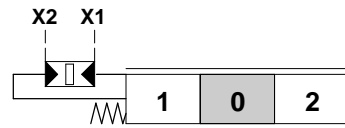
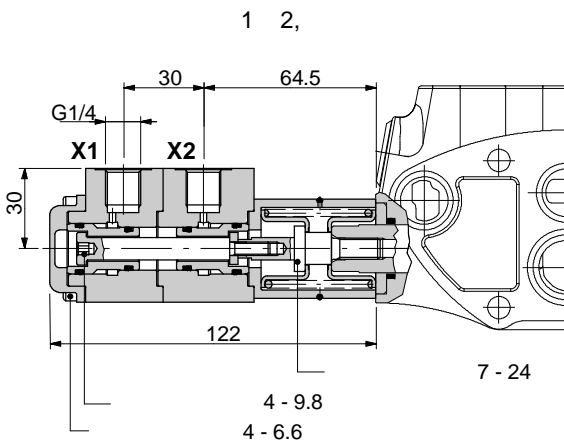
:
.....: .50
.315

8IJ2



:
.....: .50
.315

8IJ3



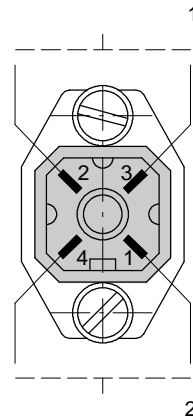
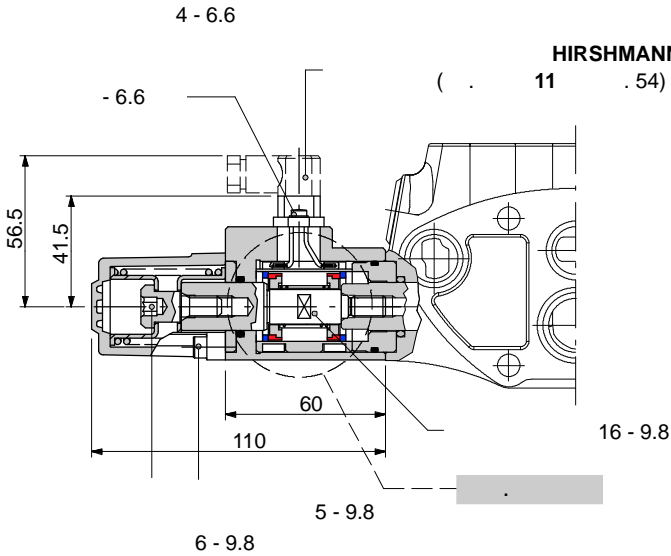
:
.....: .50
.315

8MHE3

ON/OFF

ON/OFF

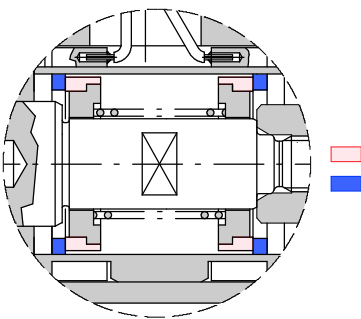
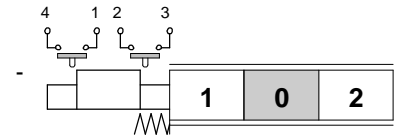
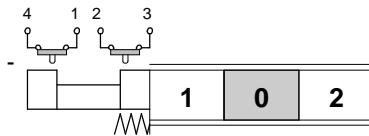
(")



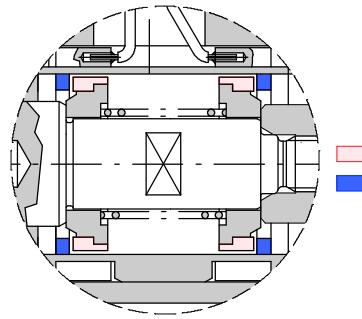
: 12 / 24 DC
: 500 A
: IP65

8MHE3(NC)

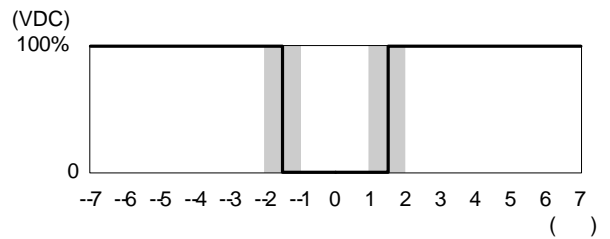
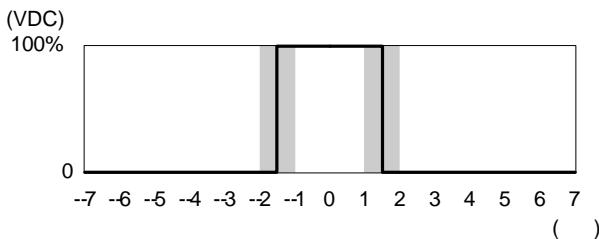
8MHE3(NO)



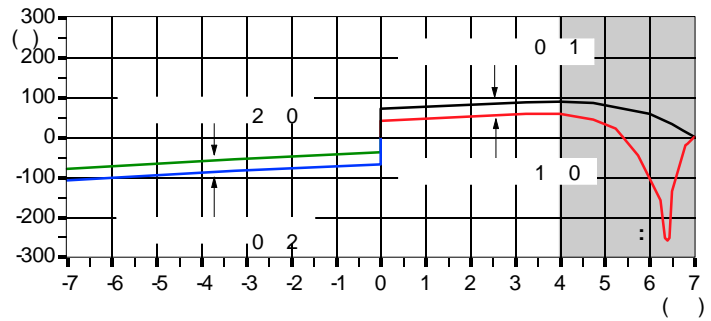
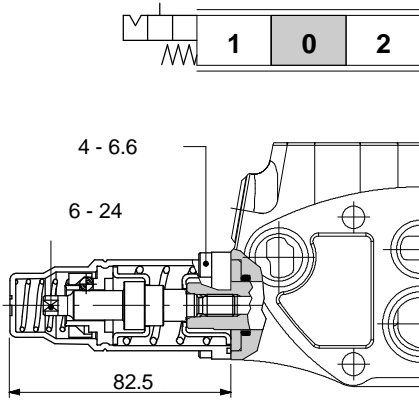
NC



NO

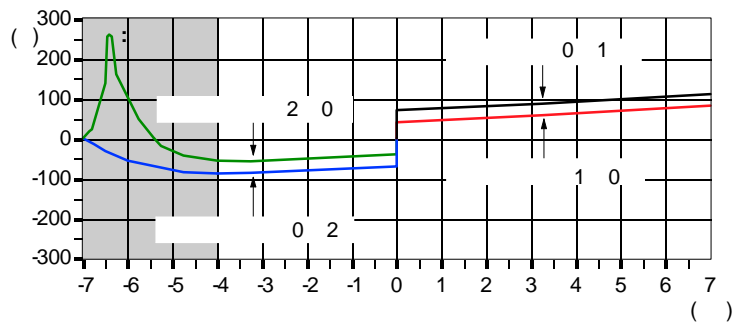
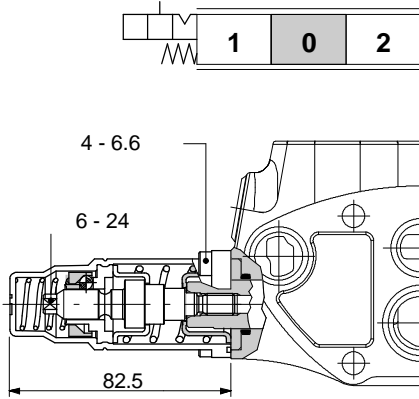


9



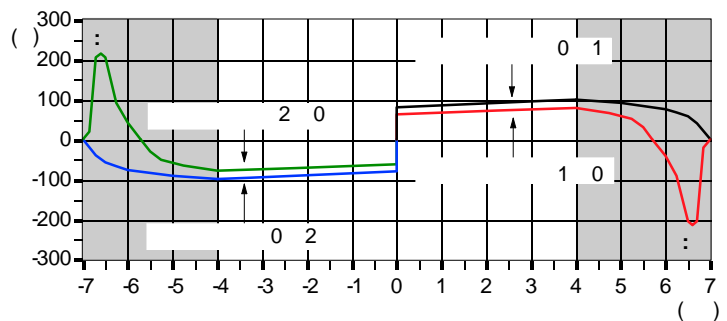
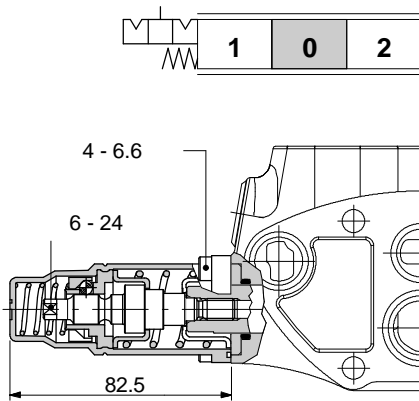
: 260 ±10%

10



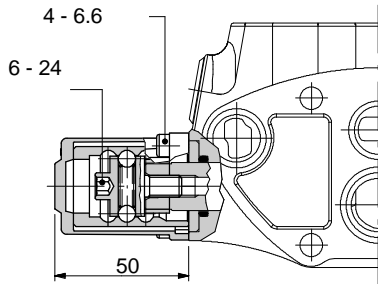
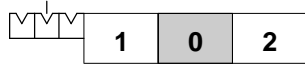
: 260 ±10%

11



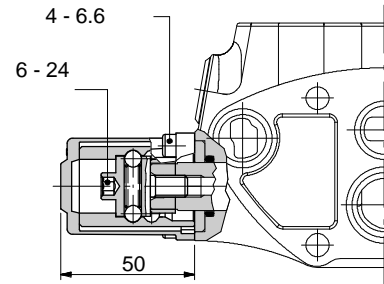
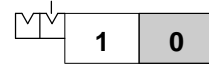
: 220 ±10%

11



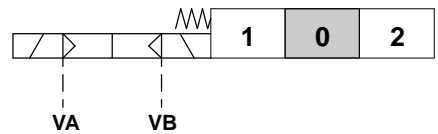
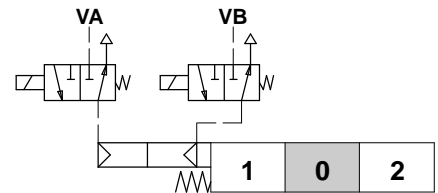
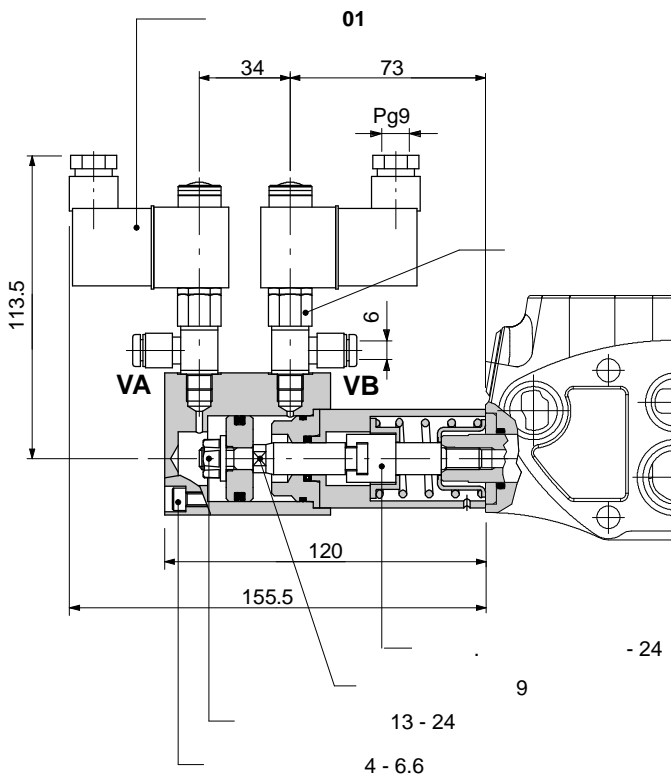
:
..... 300 ±15%

15



:
..... 300 ±15%

8EP3 ON/OFF -



: .6
: .10

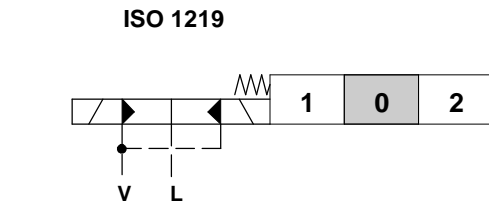
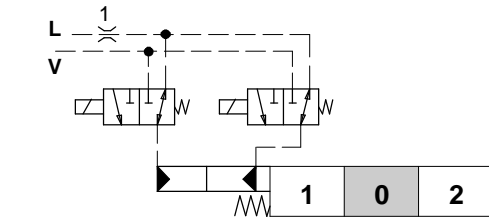
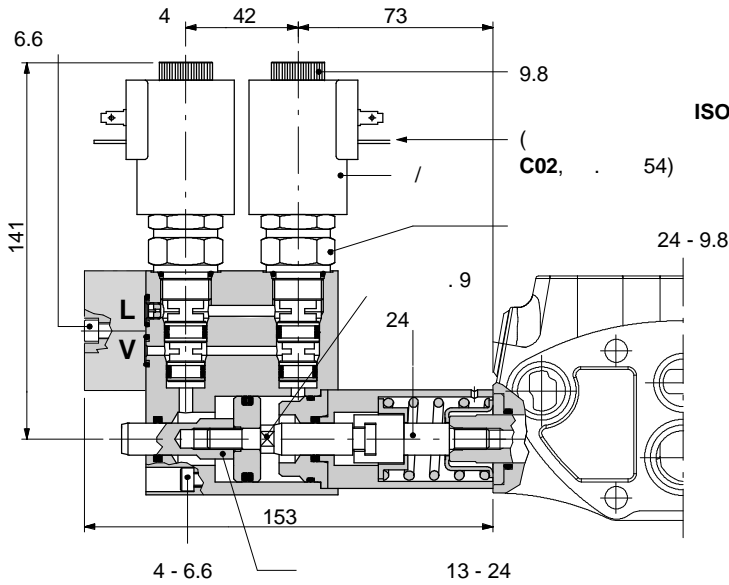
: ±10%
: 8
: 100%

2X4001012
2X4001024

12 DC
24 DC

8ED3 ON/OFF

ON/OFF

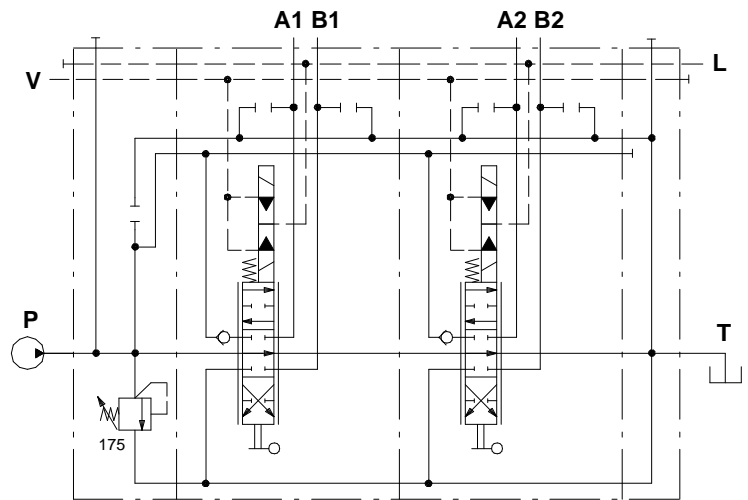
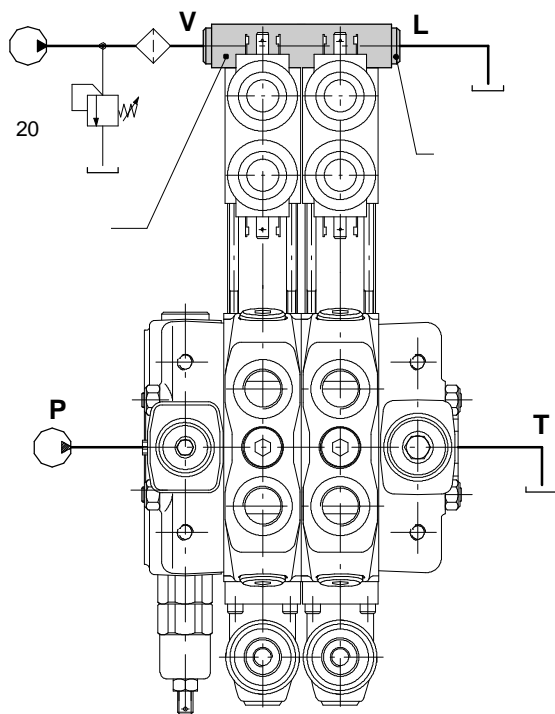


.....	: .10
.....	: .50
M	L : 25

2S0EJ08002013
2X4350012
2X4350024

3-
12 DC
24 DC

: ±10%
..... : 21
..... : 100%

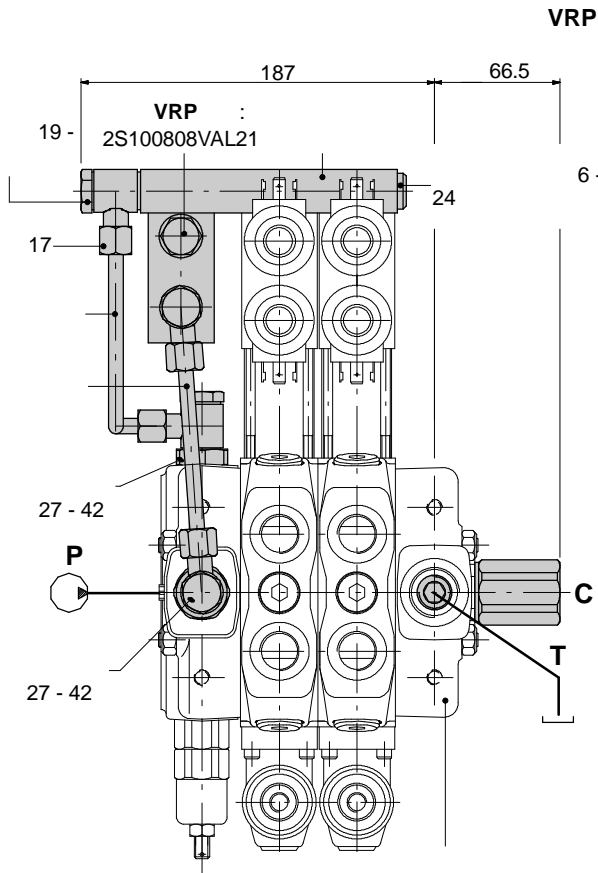


(BSP)

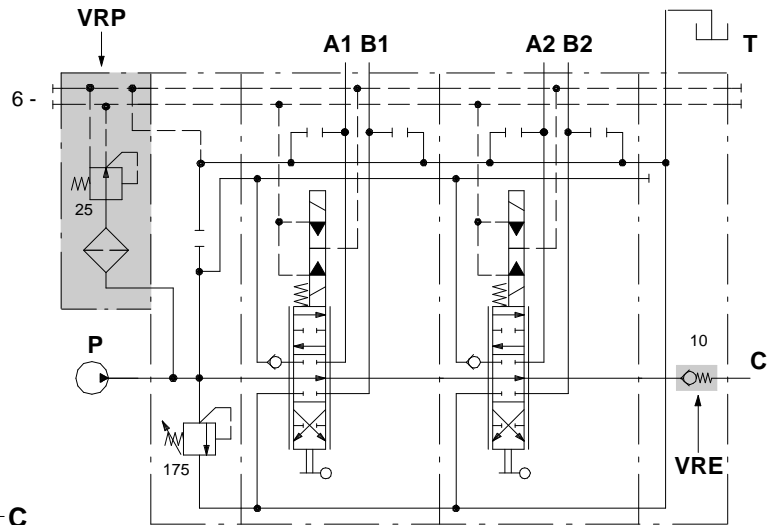
KE1S0	5KE1S00030	1-
KE2S0	5KE2S01330	2-
KE3S0	5KE3S01330	3-
KE4S0	5KE4S01330	4-
KE5S0	5KE5S01330	5-
KE6S0	5KE6S02330	6-
KE7S0	5KE7S01330	7-
KE8S0	5KE8S01330	8-

SD8/2/AC(YG3- 175)/18ED3L/18ED3L/RC- KE2S0- 24VDC

24



VRP



VRP:

- : 25
- : 8 /
- : 80

(BSP)

KE1R3	5KE1R31230	1-
KE2R3	5KE2R31230	2-
KE3R3	5KE3R31230	3-
KE4R3	5KE4R31230	4-
KE5R3	5KE5R31230	5-
KE6R3	5KE6R31230	6-
KE7R3	5KE7R31230	7-
KE8R3	5KE8R31230	8-

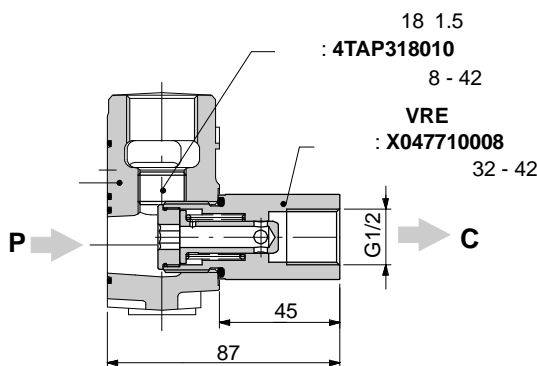
SD8/2/AC(YG3-175)/18ED3L/18ED3L/RV-KE2R3-24VDC

VRE

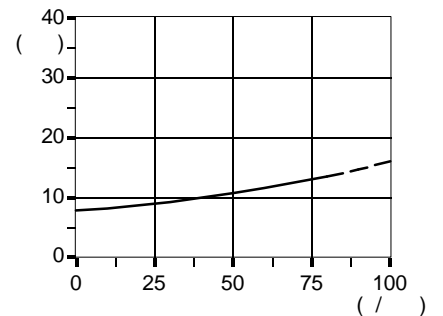
VRE

RV

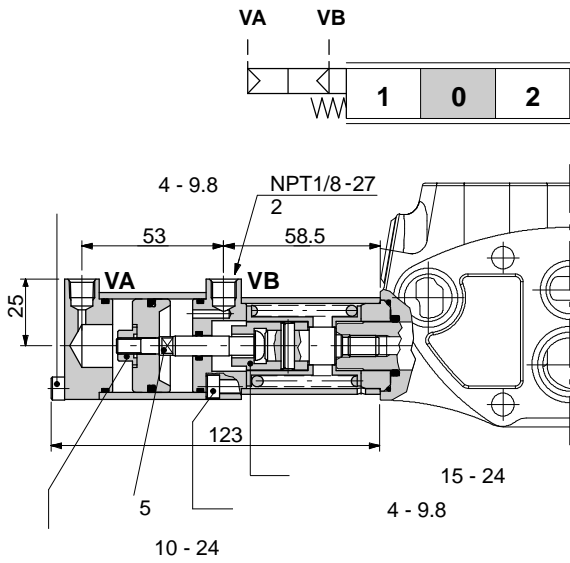
613300121,



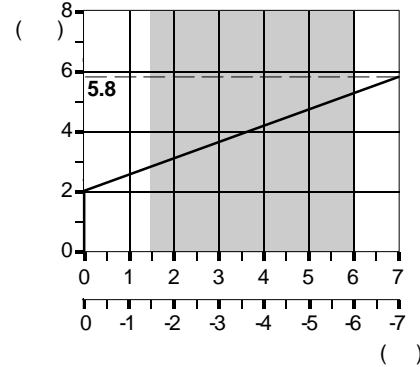
P - C



8PF

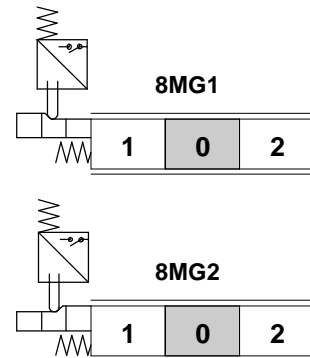
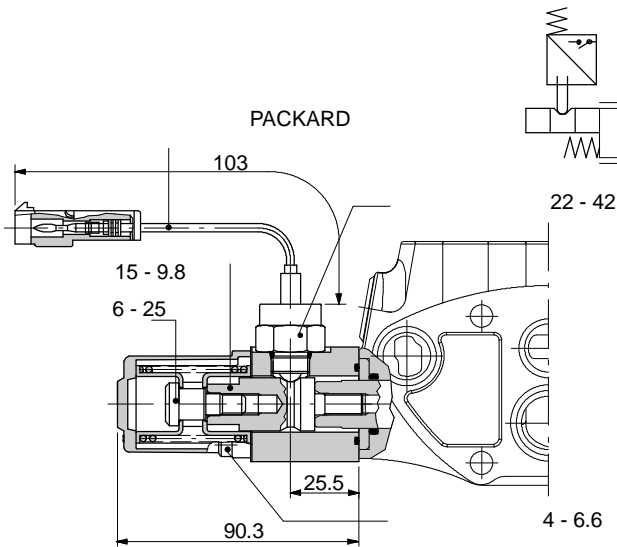


Q/8PF 5EL108301B
P/8PF 5EL108300D



8MG3 (-)

(2), 8MG1(NO), 5V08108060 (1) 8MG2(NO), 5V08108070 8MG3.



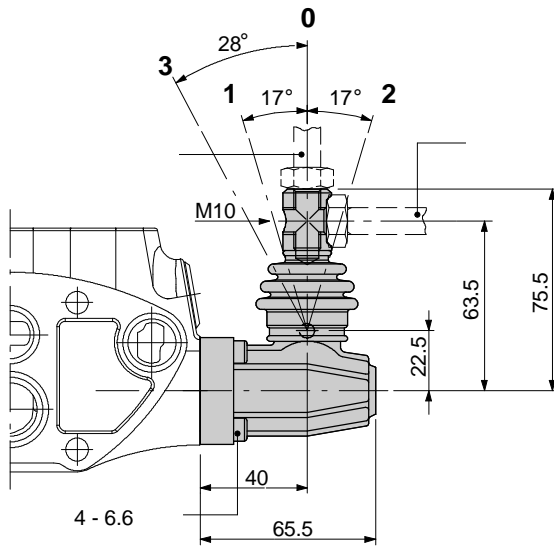
(- (NC) -)

4MIC730 - (NO)
PACKARD, C07
4MIC740 - (NC)
PACKARD, C17

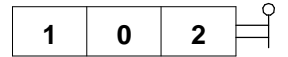
.54

:
: 5x10⁵
: 10⁵ - 7A / 13.5 DC
: 5x10⁴ - 10A / 12 DC

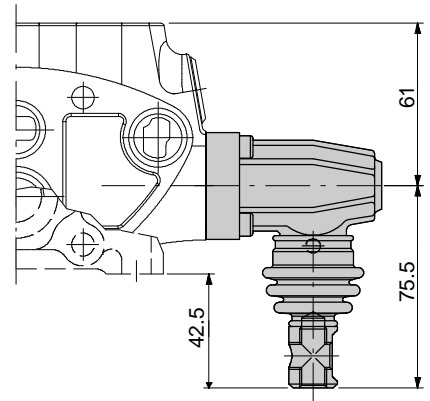
L



180° (L180).



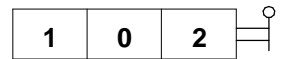
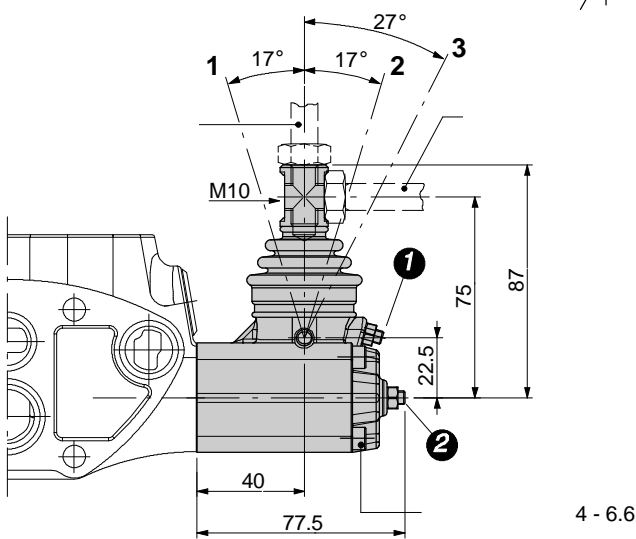
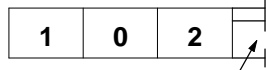
L180



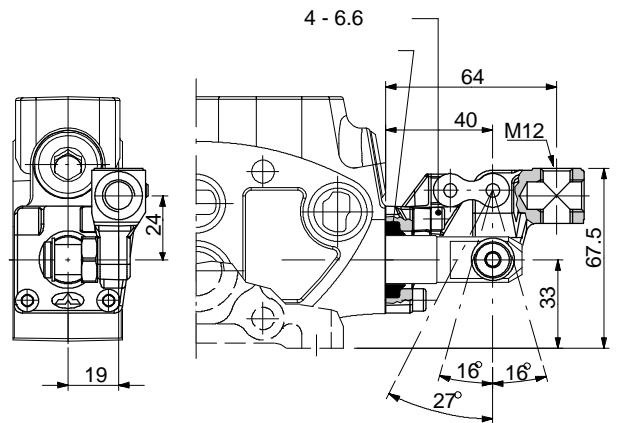
LF3

LB

180° (LF3180).

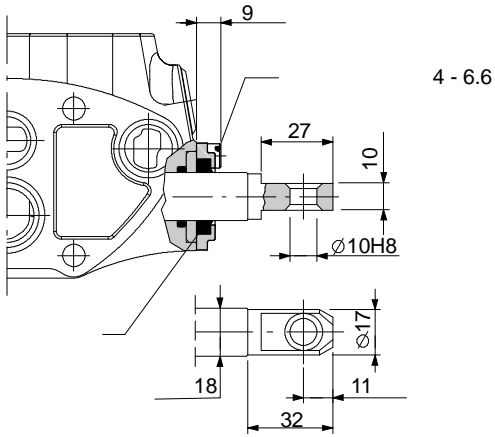
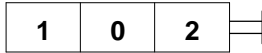


LB4



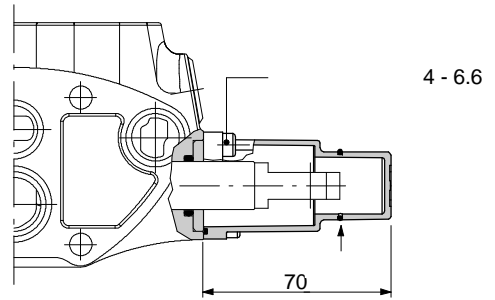
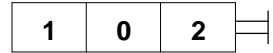
1	:	2:	2.5
		8 - 6.6	
2	:	1:	2.5
		8 - 6.6	

SLP

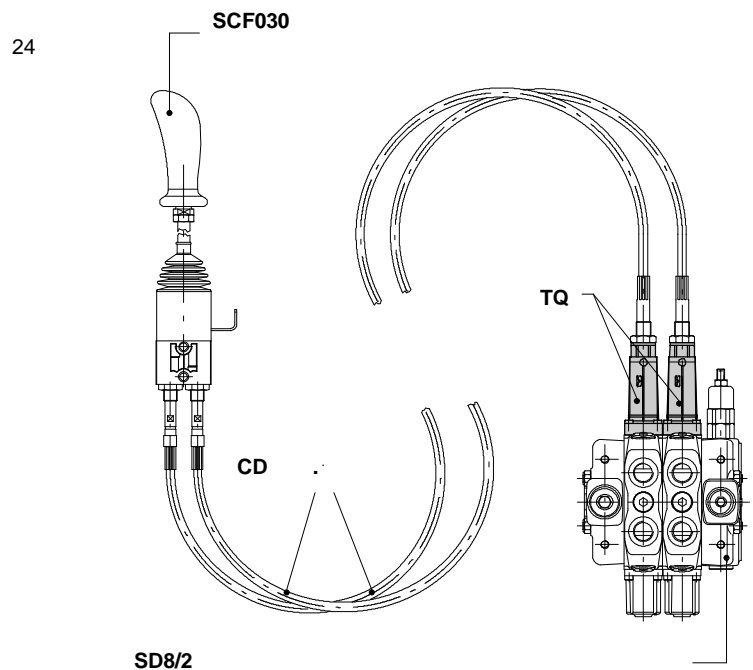
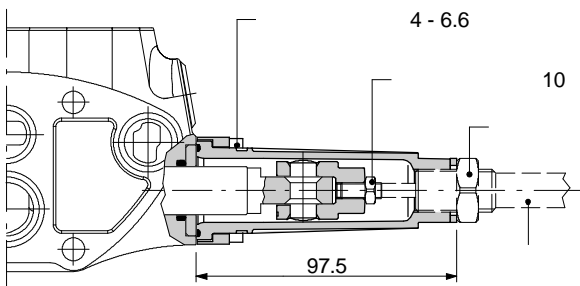
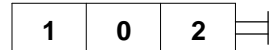


SLCY

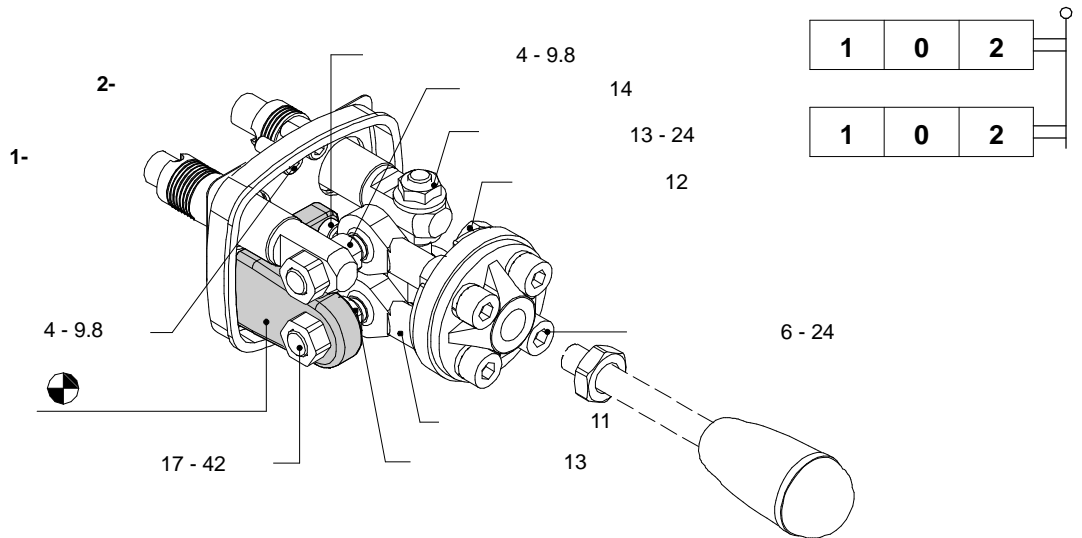
- 8PF,
- 8ED3.



TQ

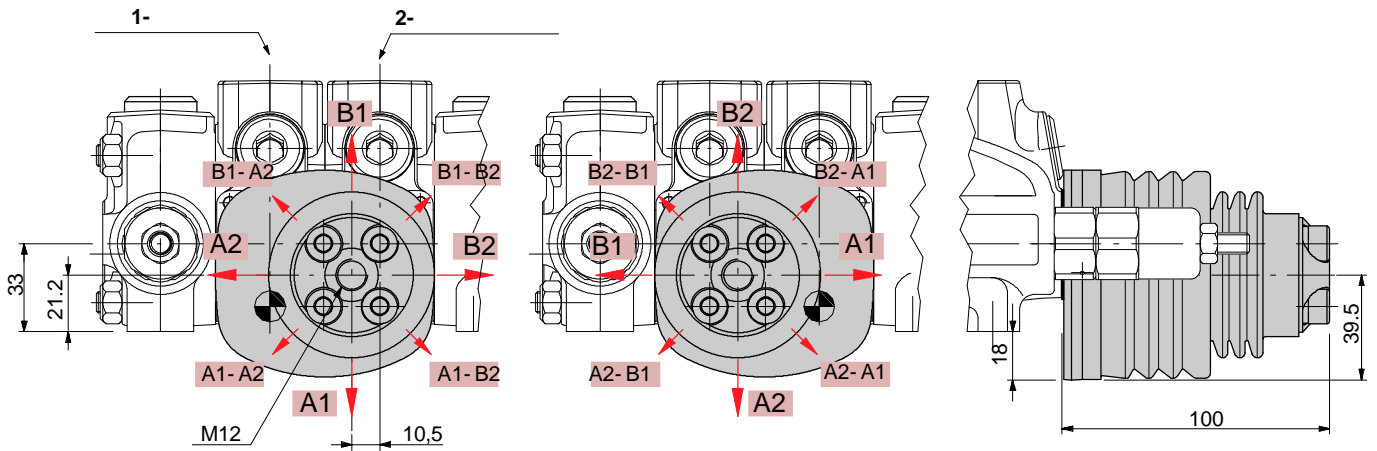


LCB



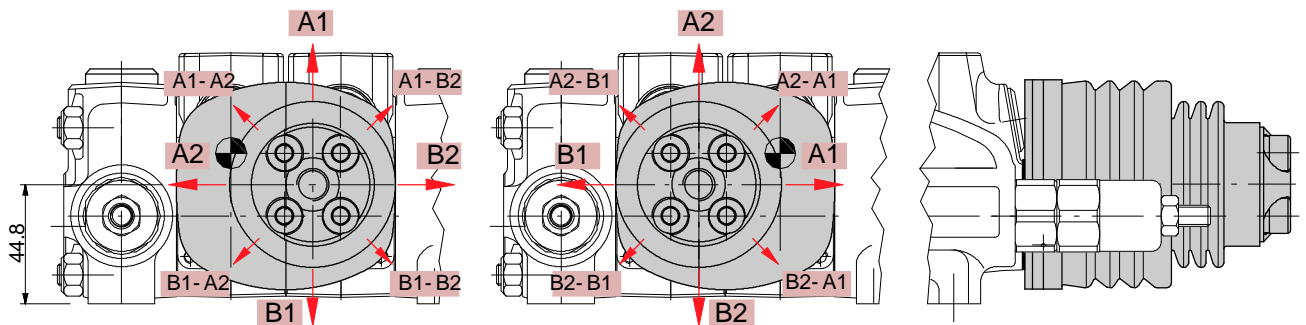
LCB1

LCB2



LCB3

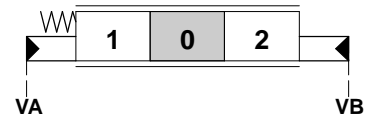
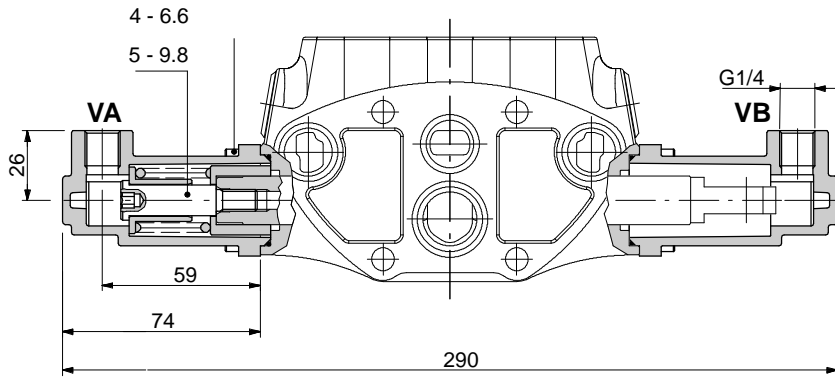
LCB4



8IM : 5IDR208300

1CSG 3CU2310250, 1ì ă ä 3CU2310420

()

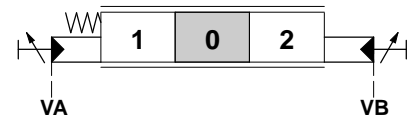
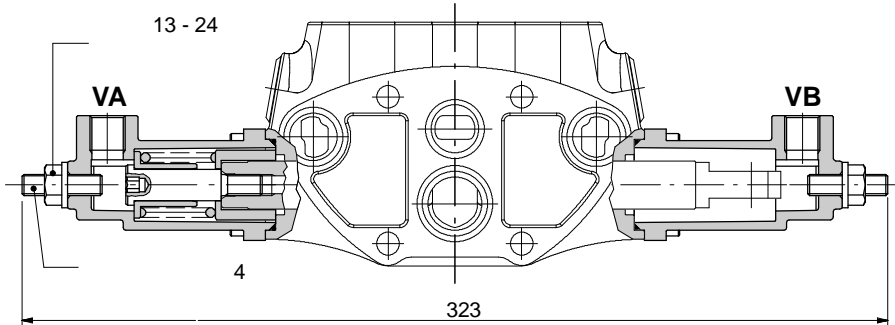


Q/IM 5EL108301A
P/IM 5EL108300A

8IMF : 5IDR208220

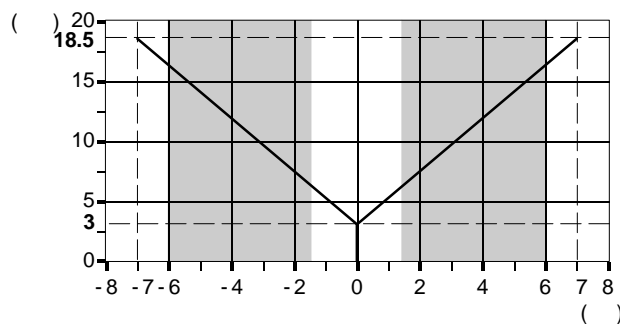
1CSG 3CU2310250, 1ì ă ä 3CU2310420

()

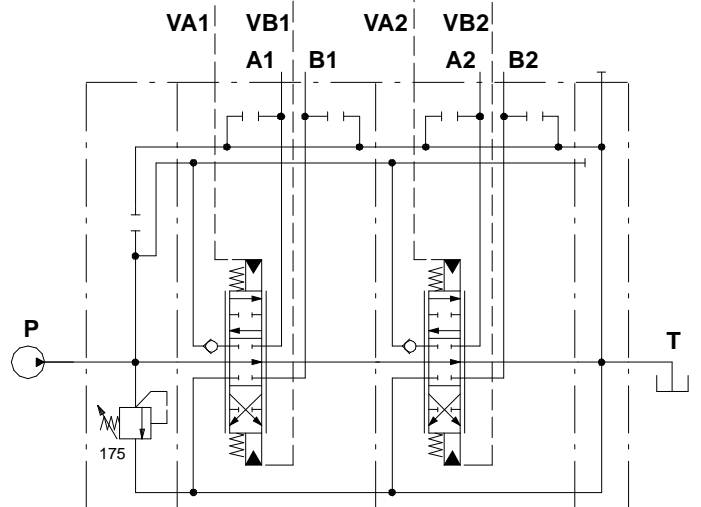
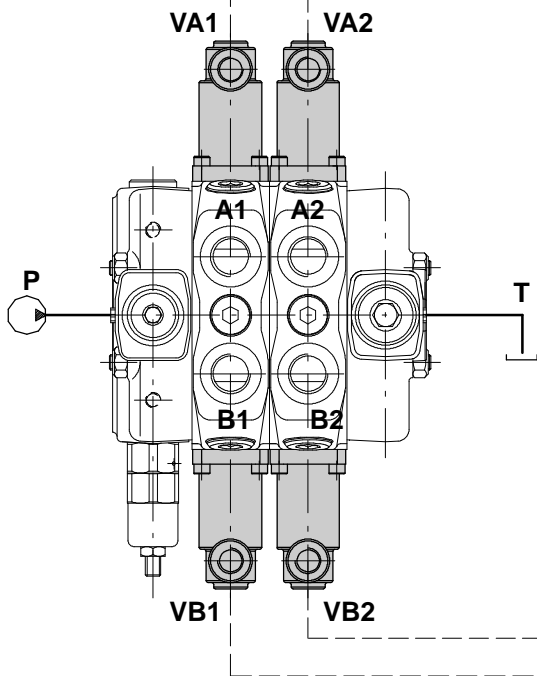
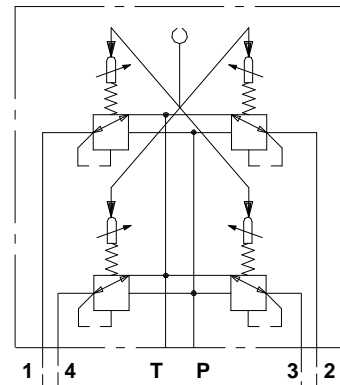
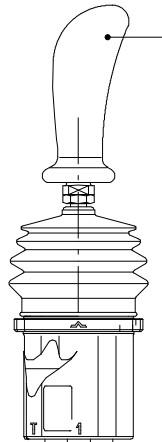
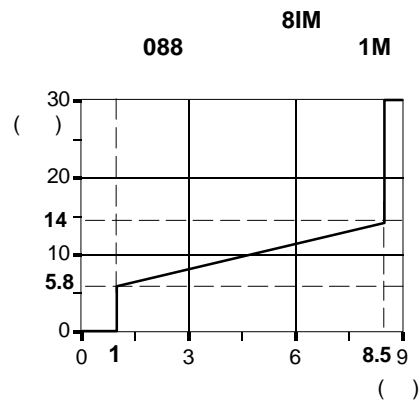
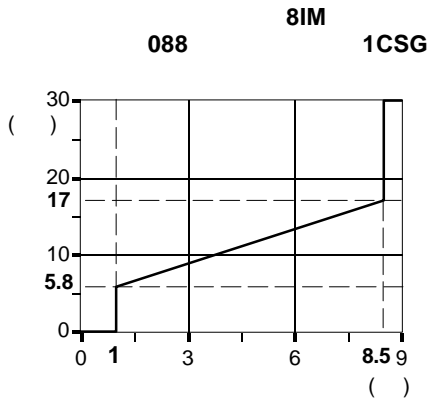


- 30

2 ← 0 → 1



8IM

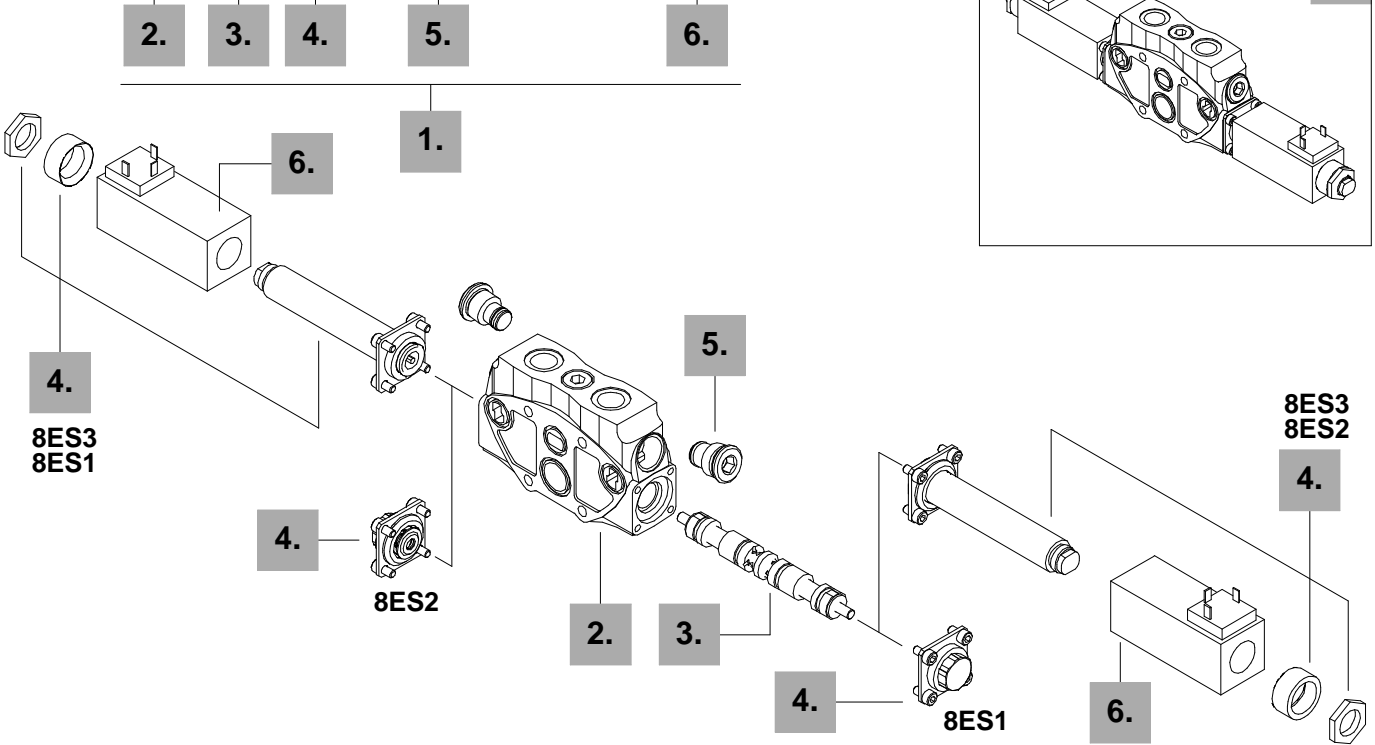


SD8/2/AC(YG3- 175)/1CSG8IM/1CSG8IM/RC+
SV01- B/01W- 088MA- 088MA- 088MA- 088MA

SD8

8ES

EL SD8 / P - 1 8ES3 P 1 (G3 - 100) - 24VDC



1.

Q-18ES3-12VDC 613151005

P-18ES3-12VDC 613101017

2.

Q/IM-ES 5EL108301A
P/IM-ES 5EL108300A

3.

1(ES3) 3CU2310020

2(ES3) 3CU2325020

4.

8ES1 5V08018 P - A,
8ES2 5V08018 P - B,
8ES3 5V08019

5.

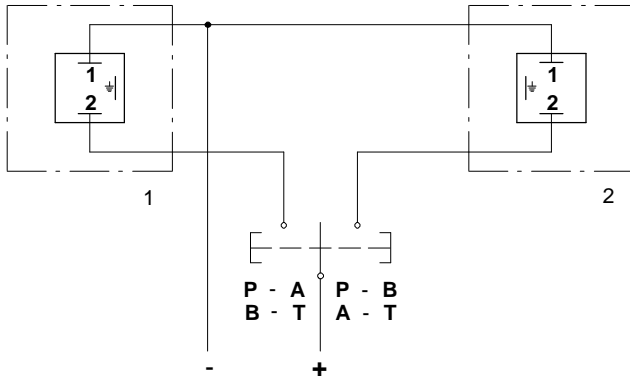
. 21

6.

12VDC 4SOL714112
24VDC 4SOL714124

12 DC
24 DC

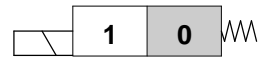
8ES



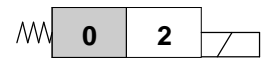
8ES3



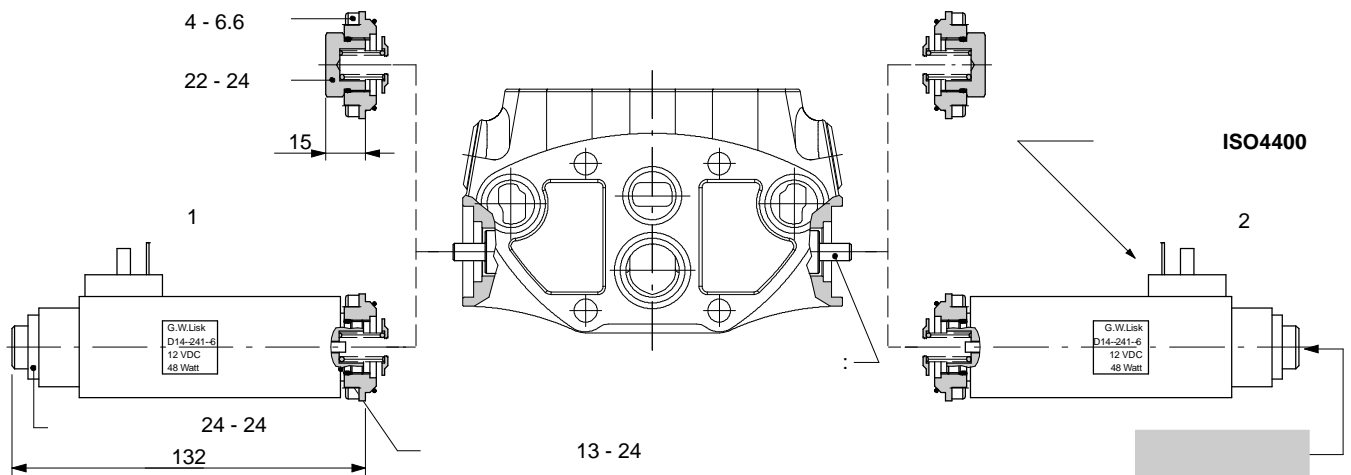
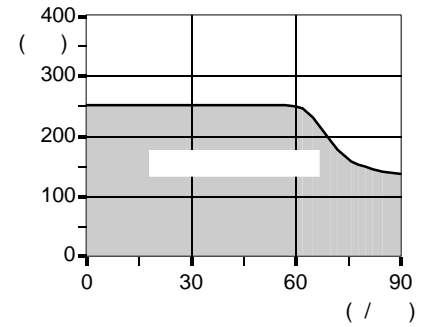
8ES1

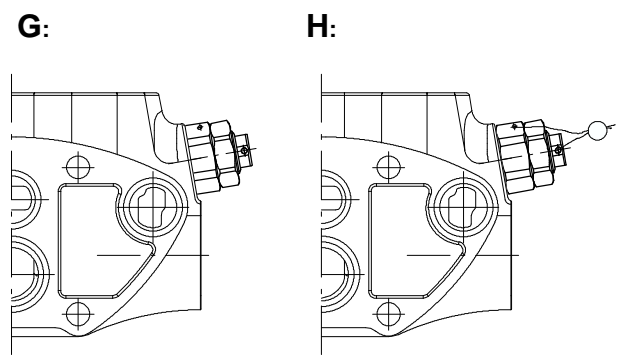
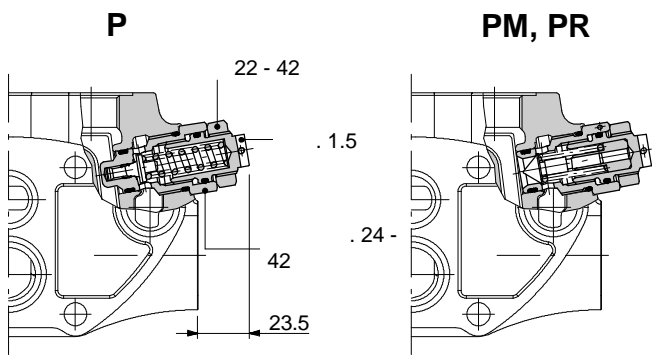
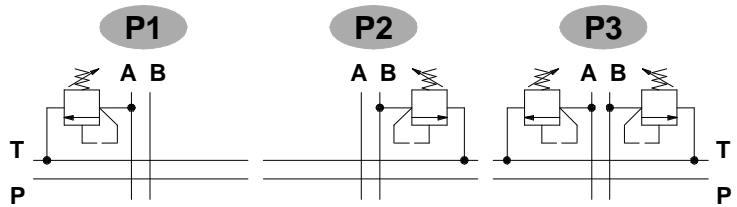
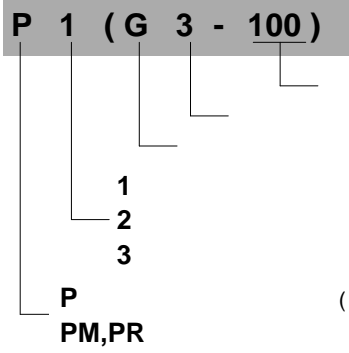


8ES2



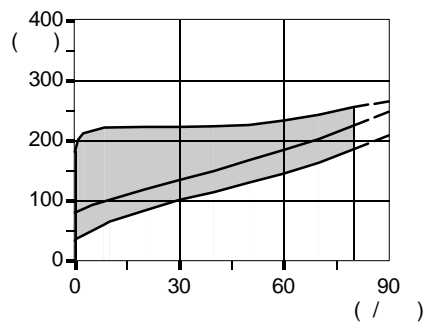
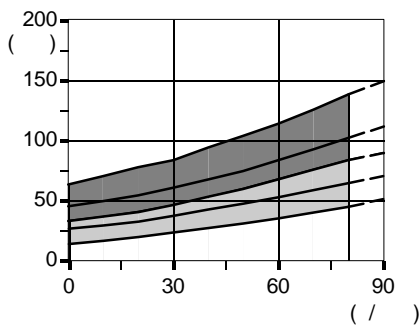
:
 () -
 (D_p = 100 / T = 40°C)..... : 10³/_l
 :
 : ±10%
 : 48
 : 100%



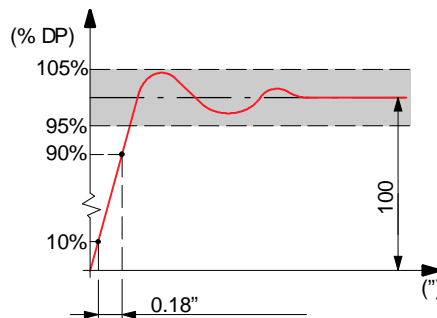
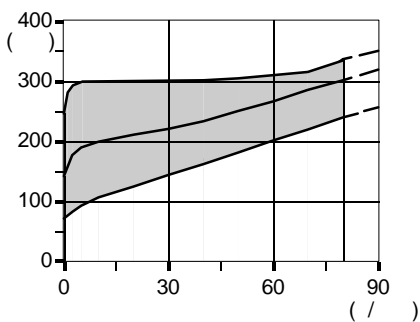


PR, 1 (: 30)
 PM, 1 (: 50)

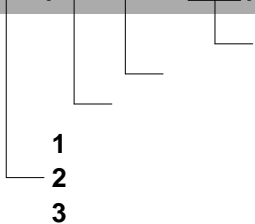
P, 3 ()
 : 100



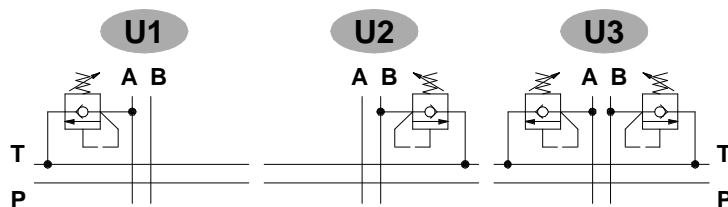
P, 4 ()
 : 200



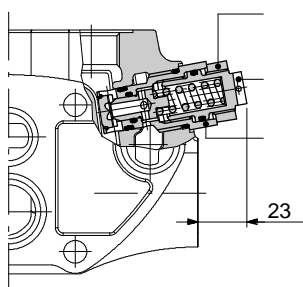
U 1 (G 3 - 100)



(2, 3, 4)
(G, H)

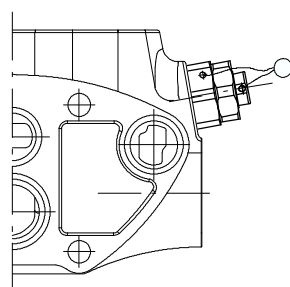


G:

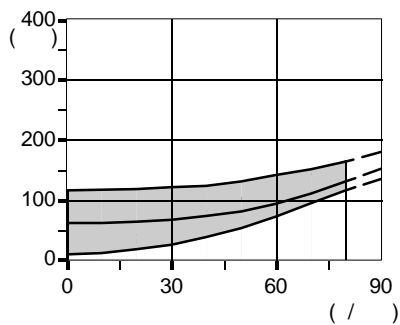


22 - 42
1.5
24 - 42

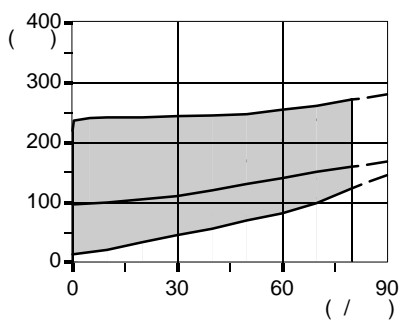
H:



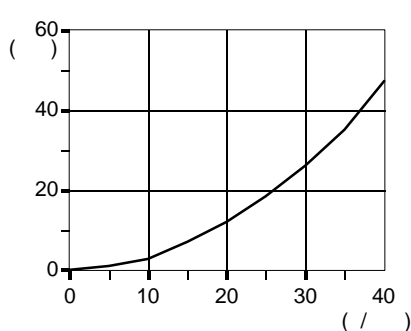
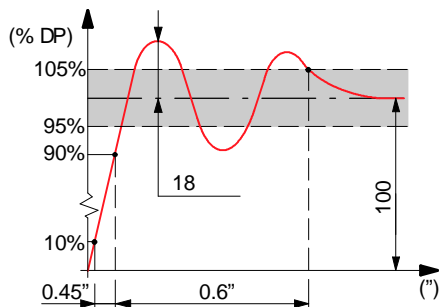
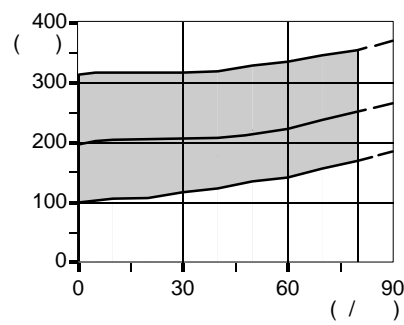
2 ()
: 63



3 ()
: 100



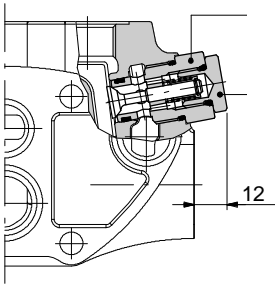
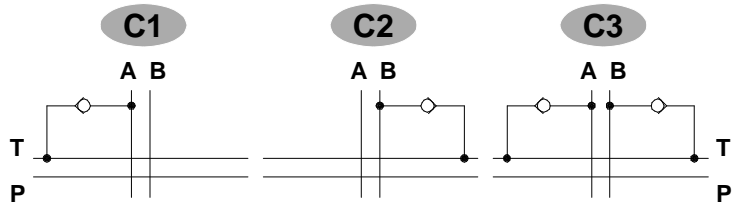
4 ()
: 200



SD8

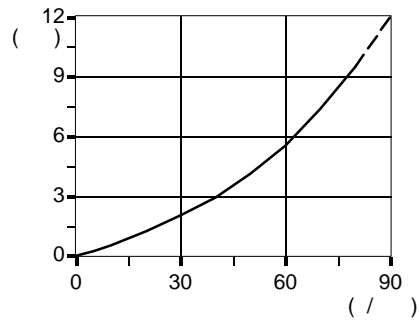
C 1

- 1
- 2
- 3



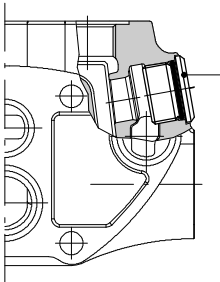
24 - 42

19 - 24

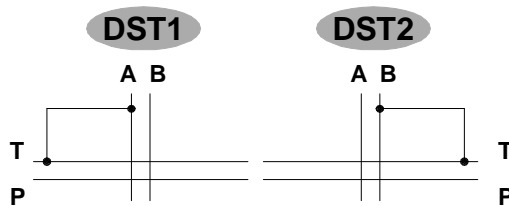


DST 1

- 1
- 2

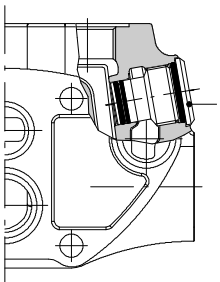


10 - 42

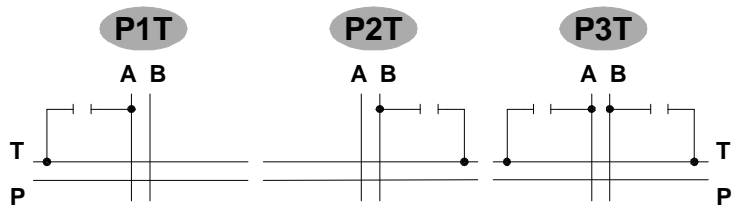


P 1 T

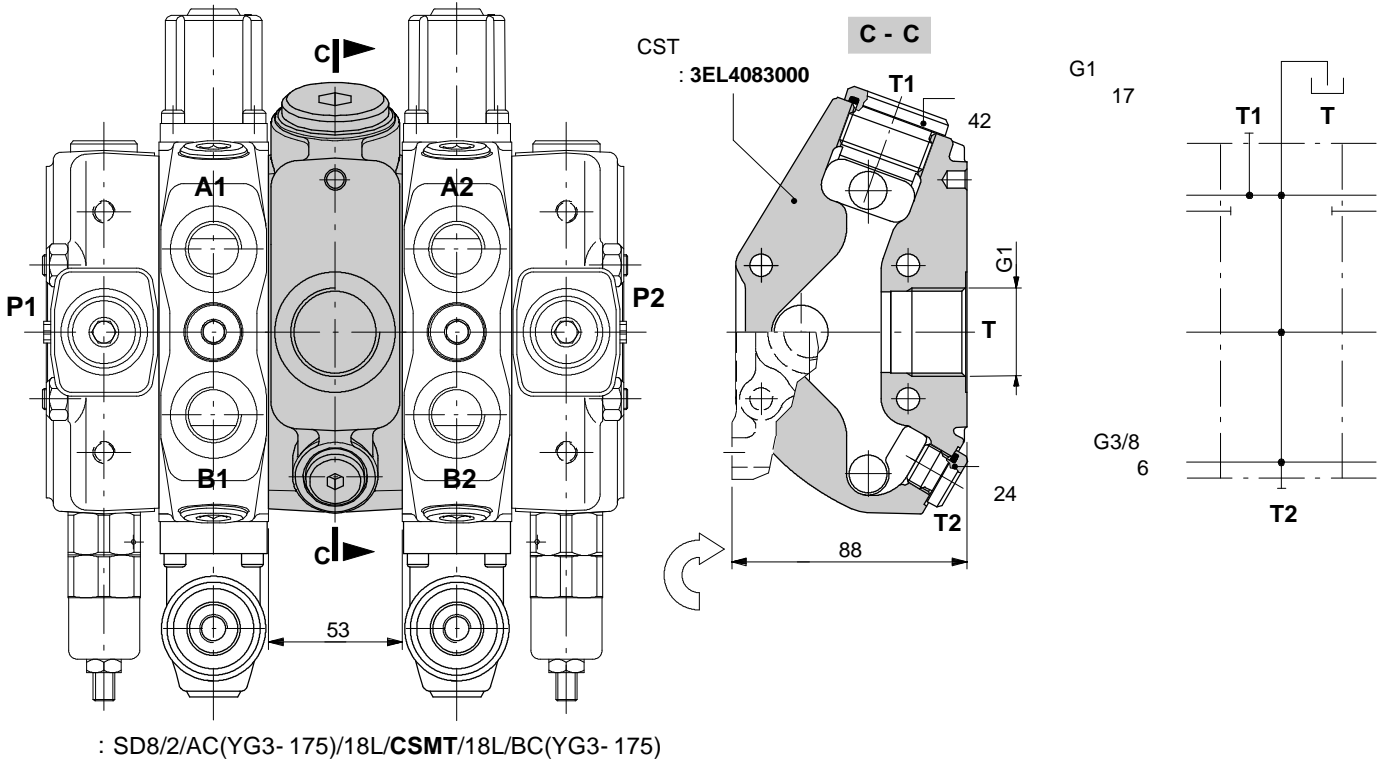
- 1
- 2
- 3



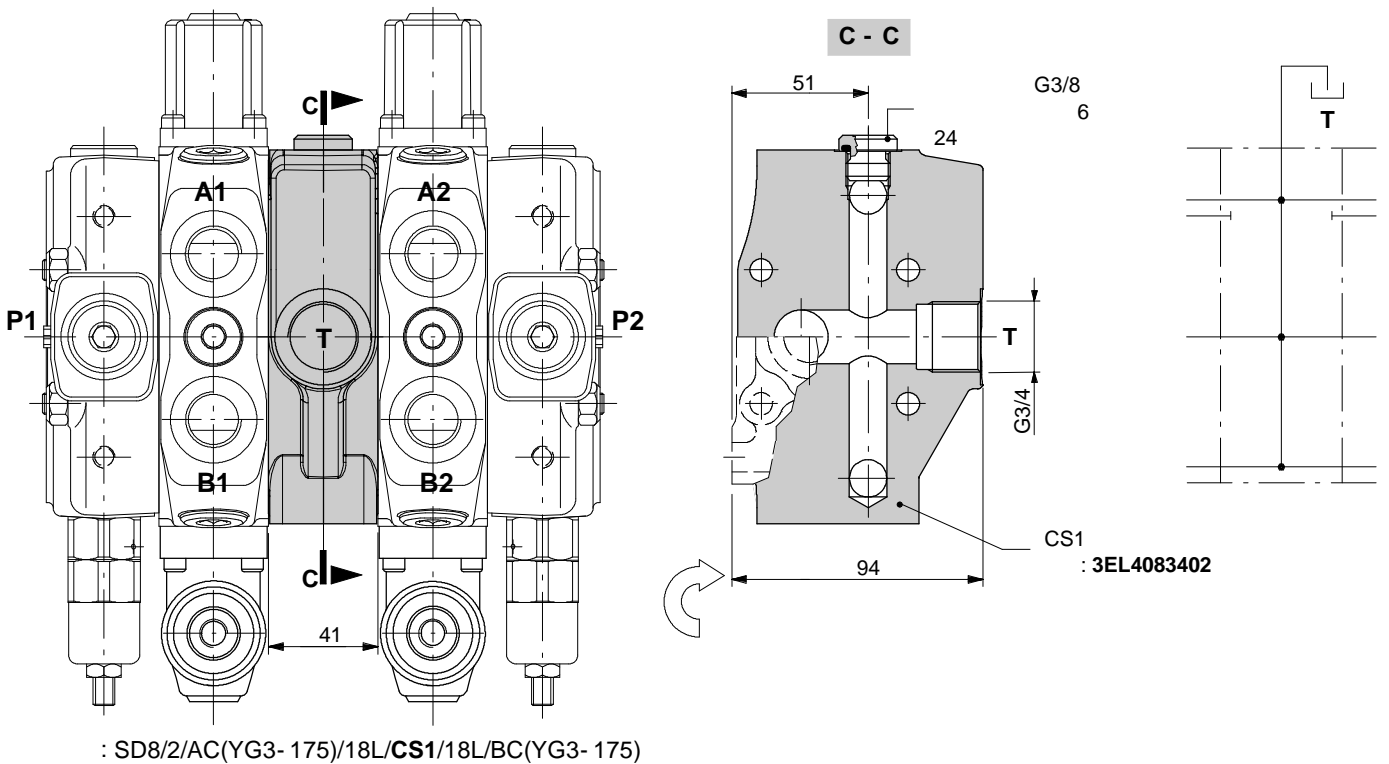
10 - 42



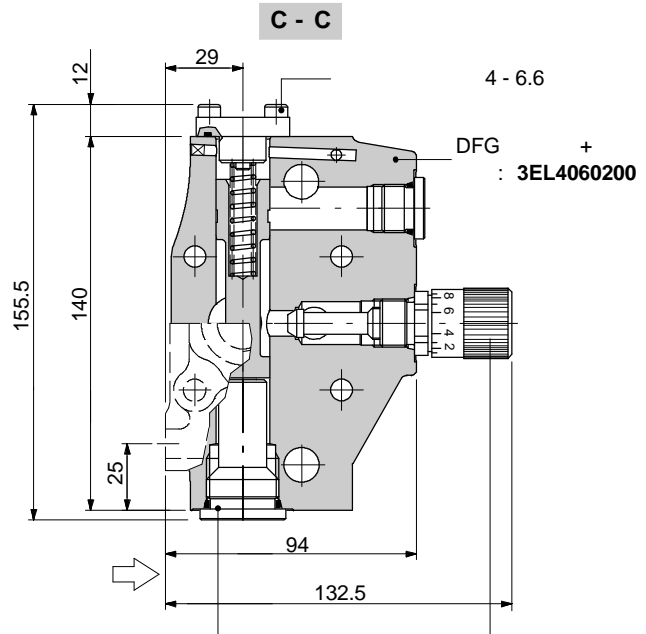
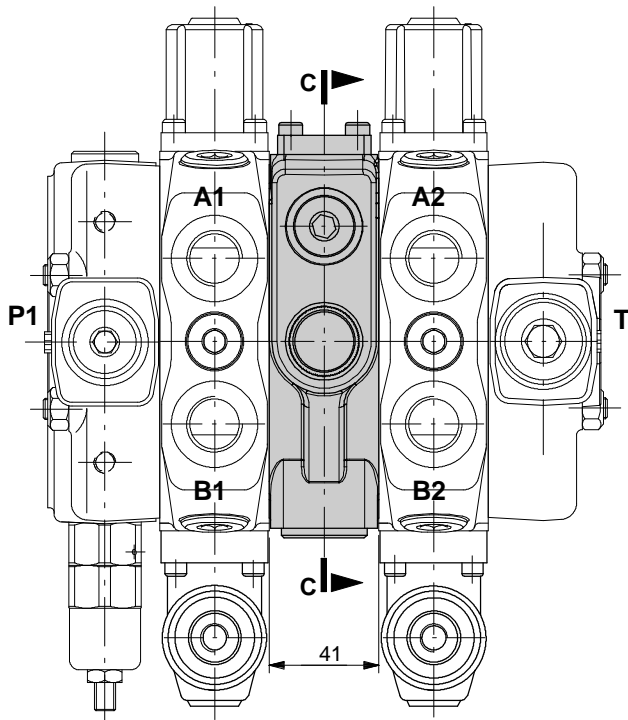
CST



CS1

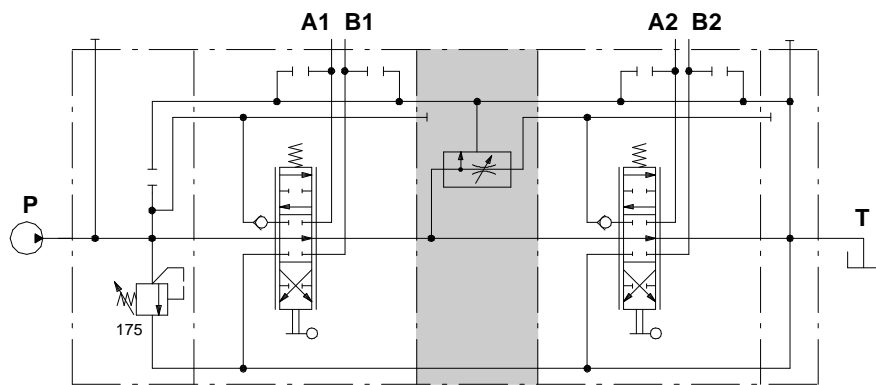


0 80 / ,



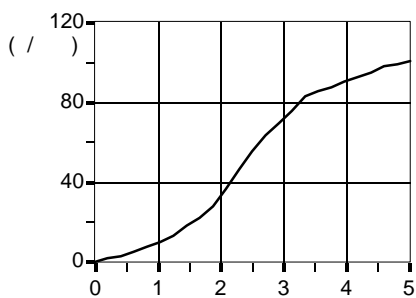
: 5CAS302074
12 - 42

: XCAR705200
27 - 24

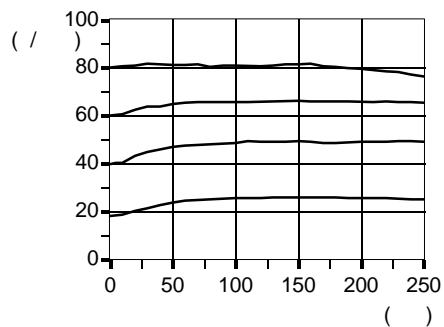


: SD8/2/AC(YG3-175)/18L/DFG/18L/RC

P = 100



Q = 110 /



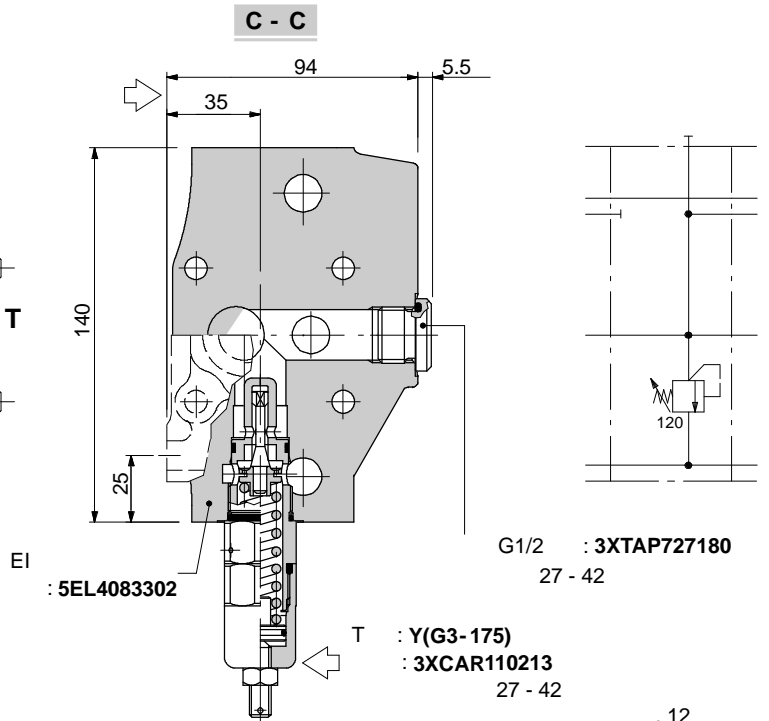
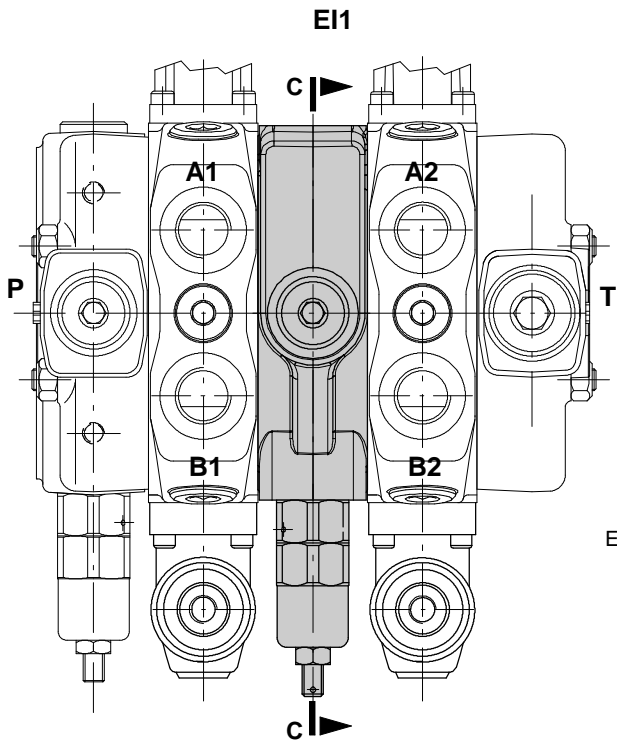
EI

20

Y

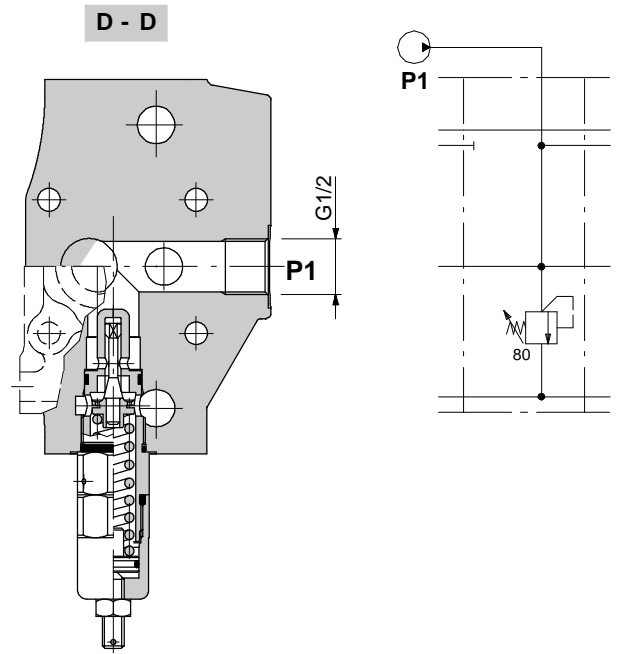
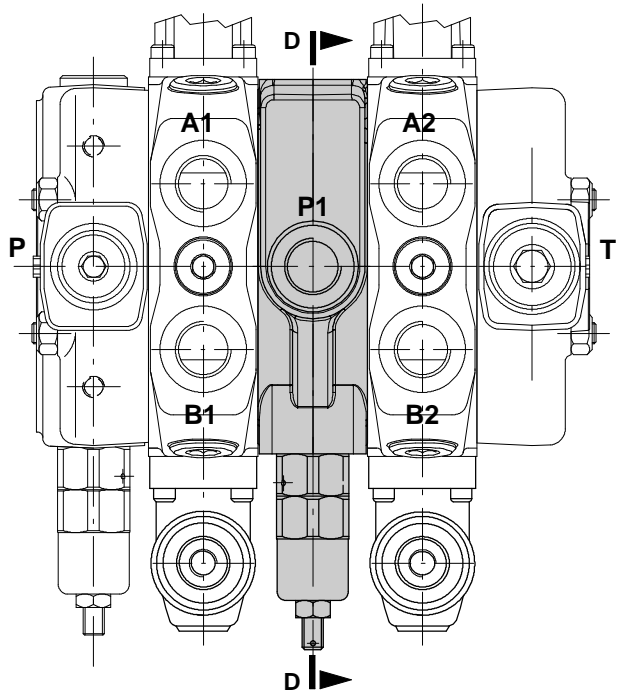
X.

EI2



: SD8/2/AC(YG3-175)/18L/EI1(YG3-120)/18L/RC

EI2



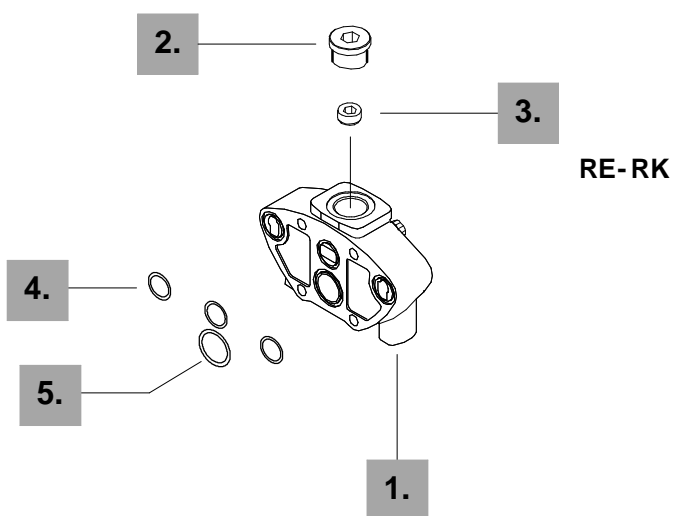
: SD8/2/AC(YG3-175)/18L/EI2(YG2-80)/18L/RC

FSS D8 / RC



RC:
RD:
RE:
RK:

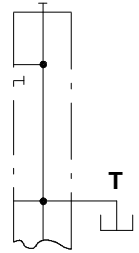
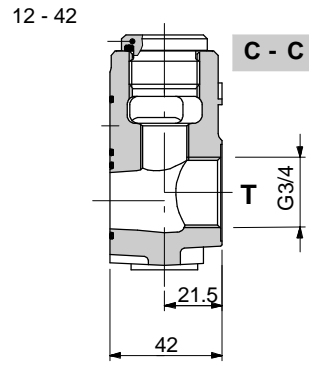
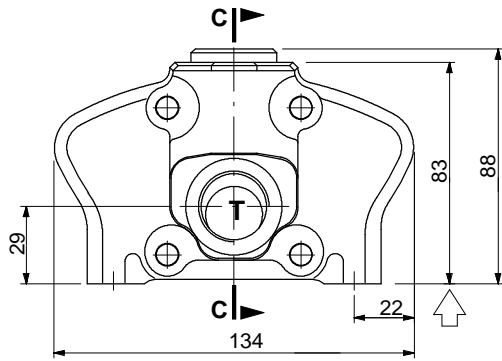
“carry-over”



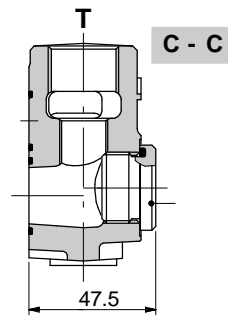
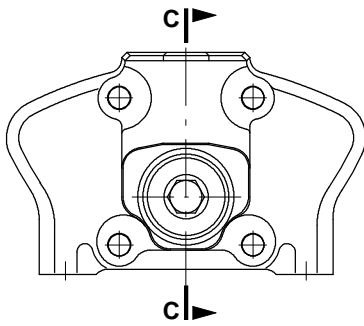
N°			
1.	3FIA208300	1	
2.	3XTAP732200	1	G 3/4
4.	4GUA118818	3	18.77x1.78 NBR 70 SH
5.	4GUA125118	1	25.12x1.78 NBR 70 SH

N°				
3.	4TAP318010	1	18 1.5 (RE) (RK)	“carry-over”

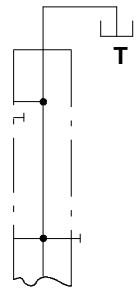
RC



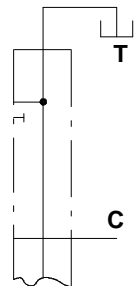
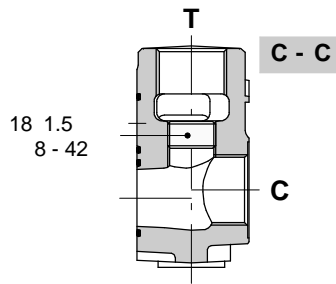
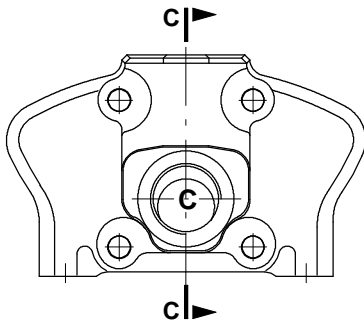
RD



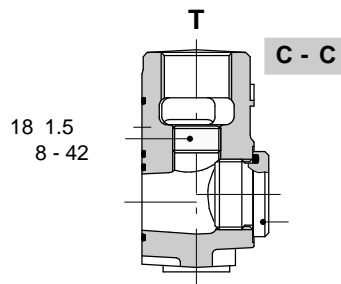
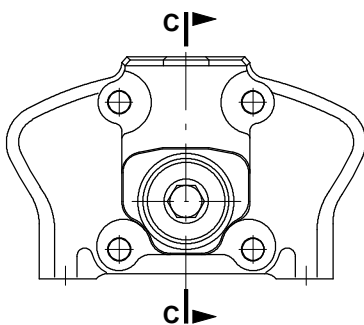
12 - 42



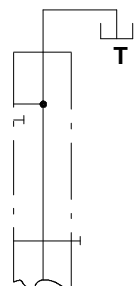
RE



RK

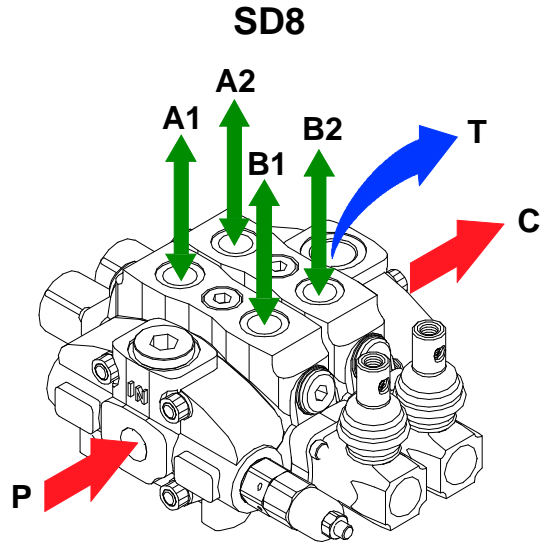


12 - 42



SD8

- SD8

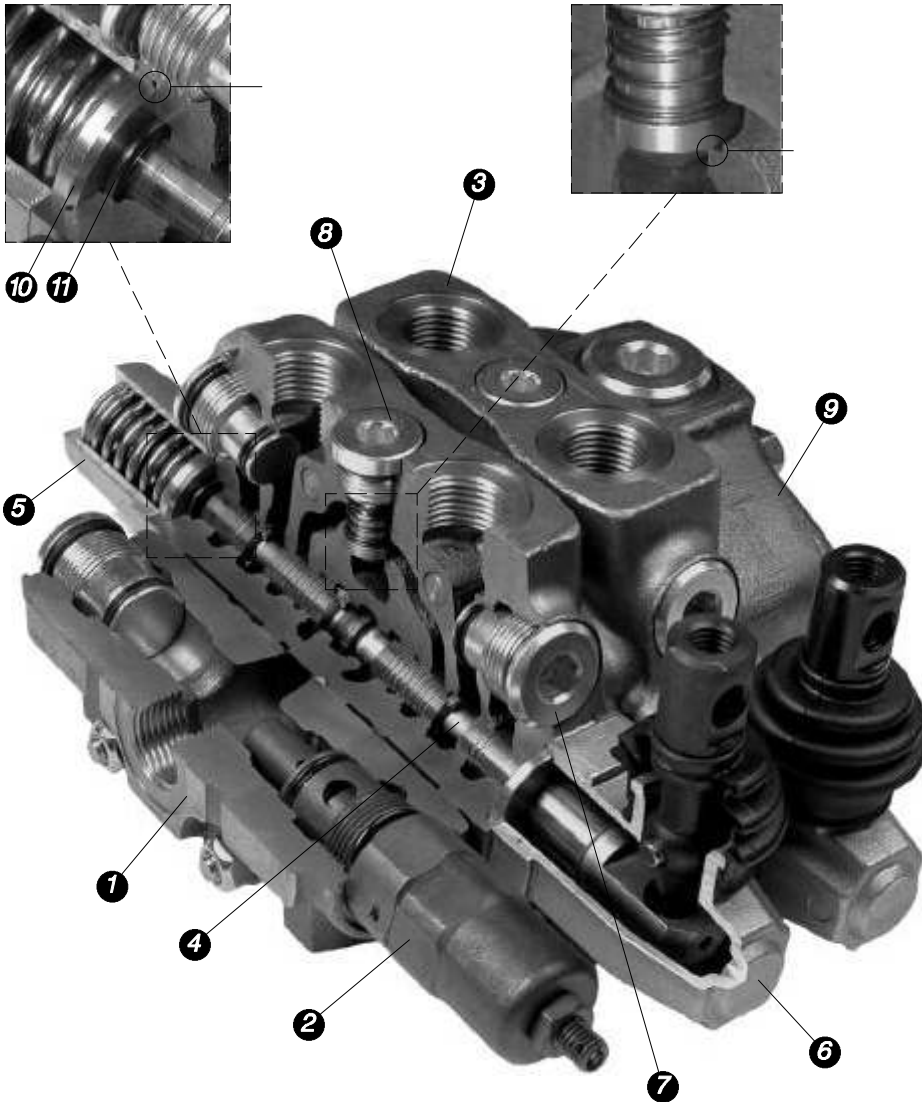


“carry-over”

	P		T C
BSP (ISO 228/1)	G 1/2	G 1/2	G 3/4
	50	50	70
	60	60	70
	60	60	70
UN- UNF (ISO 11926- 1)	7/8- 14 (SAE 10)	3/4 - 16 (SAE 8)	7/8- 14 (SAE 10)
	90	60	90
(ISO 262)	M22x1.5	M22x1.5	M27x2
	60	60	100

SD8

SD8/2/AC(YG3- 175)/18L/18L/RC



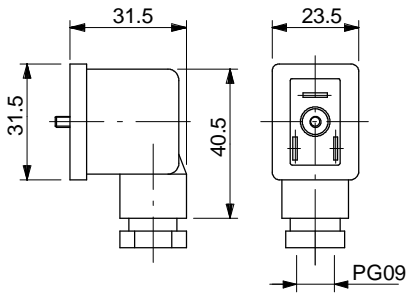
1)	
2)	
3)	
4)	
5)	“ ”
6)	
7)	
8)	
9)	
10)	
11)	18x2.5 : 4GUA118025

:

NLG12.

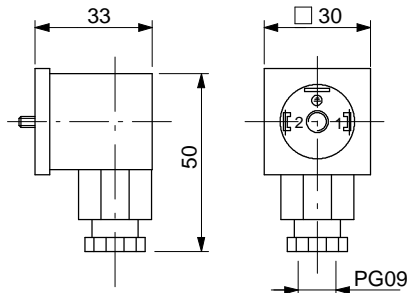
01 : 2X1001020

2P+T, DIN43650.



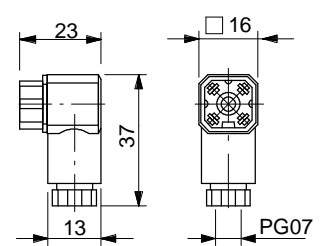
02 : 2X1001010

2P+T, ISO4400 / DIN43650-A.



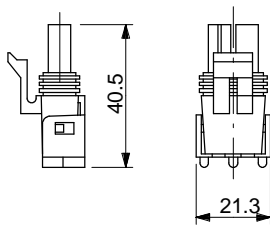
11 : 5CON006

4P, VDE0660-0110.



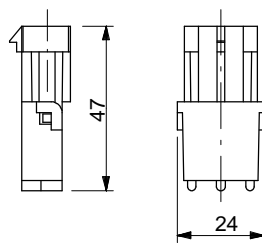
07 : 5CON001

2, Packard.

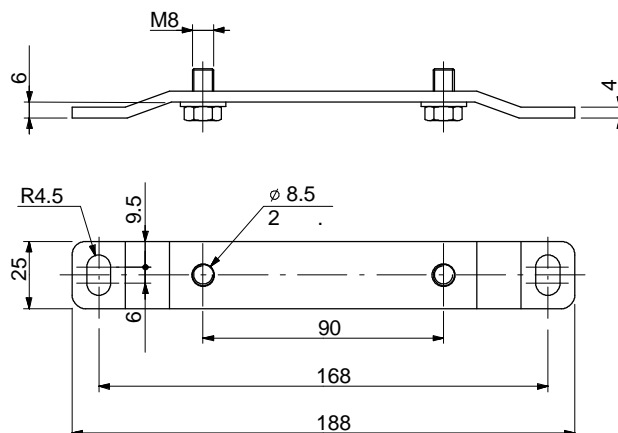
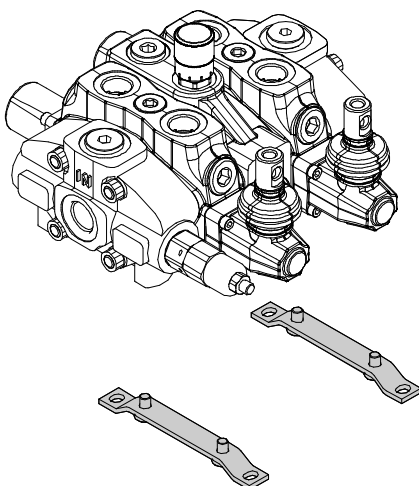


17 : 5CON005

2, Packard.



C01	2P + T	250	AC / 300	DC	10 A	.15	²	6-8	IP65
C02	2P + T	250	AC / 300	DC	10 A	.15	²	6-8	IP65
C07	2P	50	AC / 120	DC	20 A	1-2.5	²	2.8-3.5	IP67
C11	4P	/	/	/	6 A	0.14-0.5	²	4-7.5	IP65
C17	2P	/	/	/	20 A	1-2	²	2.8-3.5	IP67





(343) 222-00-21
(343) 353-59-41
info@hydront.ru
www.hydront.ru

DBU002E